

MF253 Let's go

Getting started with your device.

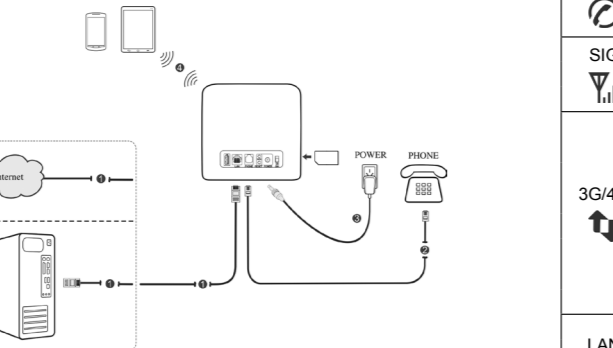
Connecting Your Device

Follow the number to connect your device.

If you select a different operation mode, the connection of the LAN port is different. Please refer to the chapter "Accessing the Internet". If you want to use the mobile network to connect to the Internet or use your home phone, you need insert your (U)SIM card first.

IMPORTANT:

- Your device does not support Micro/Nano or any other nonstandard SIM cards. To avoid device damage, please do not use them.
- Put your device at least 2 meters away from the connected phone, TV sets, radio and other electronic devices to avoid electromagnetic interference.



Indicators

Indicator	State	Description
POWER	Blue ON	Power is on and external power supply is working normally.
	OFF	Power is off or external power supply is working abnormally.
WIFI	Blue ON	WLAN works normally with no data transmission.
	Blue Blinking	WLAN works normally with data transmission.
	OFF	WLAN works abnormally or the WLAN function is disabled.
	PHONE	OFF
	Blue Blinking	The phone is ringing.
	Blue ON	The phone is in calling.
SIG	Blue Blinking	Signal strength is very good or good.
	OFF	There is no signal.
3G/4G	Red	The device is turned on but not registered to the mobile network.
	Blue Blinking	The device is connected to the LTE network and data is being transferred.
	Blue Solid	The device is registered to the LTE network.
	Green Blinking	The device is connected to the 3G network and data is being transferred.
	Green Solid	The device is registered to the 3G network.
LAN	Green ON	The LAN port is connected.
	Green Blinking	The LAN port is connected with data transmission.
	OFF	The network cable is not connected.

NOTE:

The phone function needs the network support.

Buttons

Button	Description
Reset	Press this button for 5 seconds to restore factory default configurations.
WPS	Press this button to activate the WPS function.

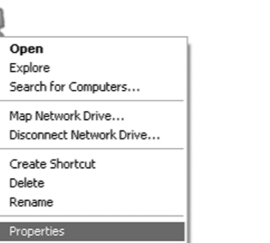
Configuring Your PC

Follow the following steps and figures for Windows XP to configure the Internet Protocol for your connection.

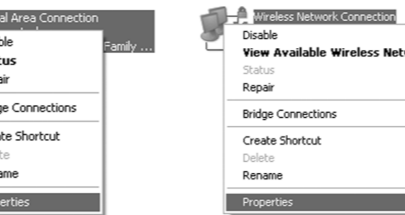
NOTES:

- Wireless Network Connection is used for Wi-Fi connection.
- Local Area Connection is used for network cable connection.

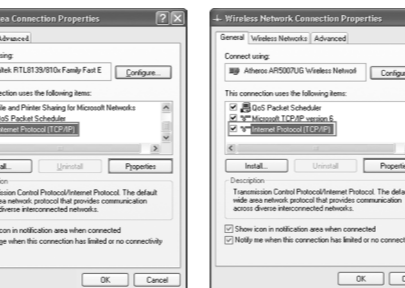
- Right-click **My Network Places**, and then select **Properties**.



- Right-click the icon for Connection, and then select **Properties**.



- Select **Internet Protocol (TCP/IP)**, and then click **Properties**.



- Select the two items indicated in the following figures, and then click **OK** to finish the configuration.

NOTE:

The phone function needs the network support.

Buttons

Button	Description
Reset	Press this button for 5 seconds to restore factory default configurations.
WPS	Press this button to activate the WPS function.

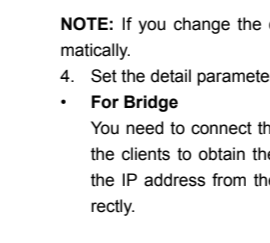
Configuring Your PC

Follow the following steps and figures for Windows XP to configure the Internet Protocol for your connection.

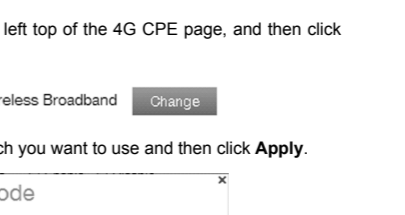
NOTES:

- Wireless Network Connection is used for Wi-Fi connection.
- Local Area Connection is used for network cable connection.

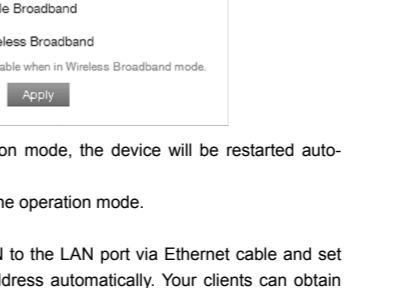
- Right-click **My Network Places**, and then select **Properties**.



- Right-click the icon for Connection, and then select **Properties**.



- Select **Internet Protocol (TCP/IP)**, and then click **Properties**.



- Select the two items indicated in the following figures, and then click **OK** to finish the configuration.

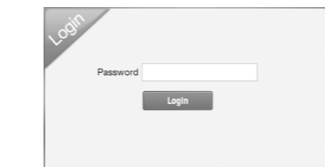
Accessing the Internet

Before accessing the Internet, please make sure that the following operations are finished.

- Your device is connected via a network cable or Wi-Fi.
- Your PC is configured.

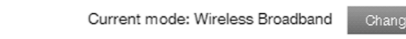
To access the Internet:

- Log in the 4G CPE Page.
 - Launch the Internet browser and enter http://192.168.0.1 in the address bar. The login page appears.

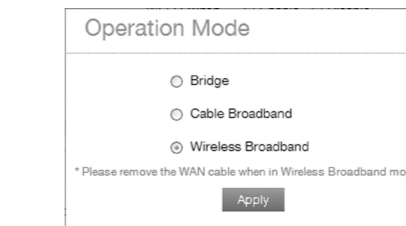


- Input the password and then click **Login**. The default password is admin.

- View the current mode on the left top of the 4G CPE page, and then click **Change**.



- Select an operation mode which you want to use and then click **Apply**.



- Set the detail parameters for the operation mode.

NOTE:

If you change the operation mode, the device will be restarted automatically.

- For Bridge**

You need to connect the WAN to the LAN port via Ethernet cable and set the clients to obtain the IP address automatically. Your clients can obtain the IP address from the WAN DHCP host and connect to the Internet directly.

NOTE:

If you want to change the operation mode, you need to set the client a fixed IP address between 192.168.0.100 and 192.168.0.200, and then log in the 4G CPE page to change it.

- For Cable Broadband**

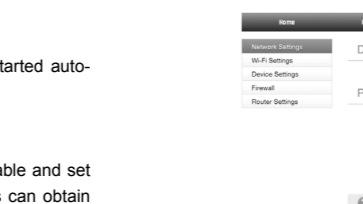
You need to connect the WAN to the LAN port via Ethernet cable and select the WAN Connection Mode. There are three WAN Connection Modes: **PPPoE**, **Static** and **DHCP**. Please contact with your service provider to confirm which mode is fit for you.

Select **Settings > Network Settings** to change the WAN connection mode and set the detail parameters.

- PPPoE mode**

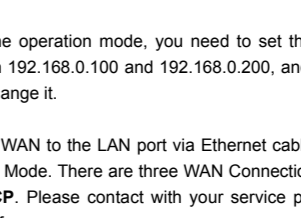
Select **PPPoE**, input the User Name and Password and then set the WAN Connection Mode.

NOTE: Your service provider gives you the User Name and Password.



- Static mode**

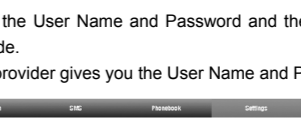
Select **Static**, input all the parameters and then click **Apply**. **NOTE:** Your service provider gives you the static address information.



- DHCP mode**

Please select **DHCP** and then click **Apply**.

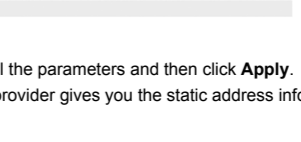
NOTE: Your service provider does not give you any parameters.



- For Wireless Broadband**

If you want to use your PC to connect to the Internet, please connect your PC to the LAN port via Ethernet cable.

Select **Settings > Network Settings > Dial-up Settings** to change the WAN connection mode. The default WAN Connection Mode is **Automatic**.



LEGAL INFORMATION
Copyright © 2013 ZTE CORPORATION.
All rights reserved.

No part of this publication may be excerpted, reproduced, translated or utilized in any form or by any means, electronic or mechanical, including photocopying and microfilm, without the prior written permission of ZTE Corporation.

The manual is published by ZTE Corporation. We reserve the right to make modifications on print errors or update specifications without prior notice.
Version No. : R1.0

ZTE CORPORATION
NO. 55, Hi-tech Road South, ShenZhen, P.R.China
Postcode: 518057

- Begin to enjoy your Internet service.

Voice Function

Making a Call

You can make a call through (U)SIM card.

To make a call:

- Pick up the handset.
- Key in the telephone number.
- You can either press # key on the telephone to send the call, or wait 4 ~ 8 seconds for the call to be connected automatically.
- The call will be connected.

NOTE:

If there is no 3G indication, the radio signal is unavailable. Change the location of the device and make sure nothing is blocking it.

Answering a Call

When the phone rings, pick up the handset to answer it. If the telephone has hands-free function you also can answer the call by pressing the **Hands-free** button. Press the **Hands-free** button again to end the call.

WPS Function

Your device supports WPS function. You can use this function to connect the client to your device.

- Power on your device, and enable the Wi-Fi function on your device.
- Enable the WPS function. Please check the WPS Setting on the 4G CPE page.
- Press the **WPS** button on your device to start Wi-Fi Protected Setup authentication process.

- Enable the WPS function on your client to respond to this authentication process.
- Follow the system prompts on your client to finish the connection.

USB Function

Your USB storage device will be used as a storage server.

- Plug the storage's USB connector into the USB port and make sure that it is tightly inserted.
- Select **Start > Run** in the Windows Operating System.
- Input `\\192.168.0.1\admin`, and then click **OK**.
- Input the user name "admin" and password which is the 4G CPE page login password, and then click **OK**.
- After login the USB storage device successfully, you can manage the files in the storage.

NOTE: If you change the 4G CPE page login password after using USB function, you need to run this command "net use * /delete" to delete the old password.

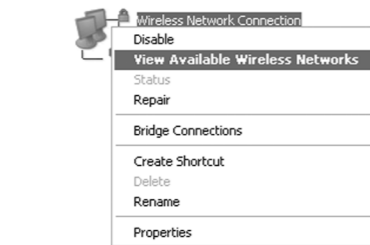
Wireless Connection

If you want to use Wi-Fi to connect your router, please refer to the following steps.

- Make sure that the WLAN works normal. Please check the Wi-Fi Setting on the 4G CPE page or check the WIFI indicator.



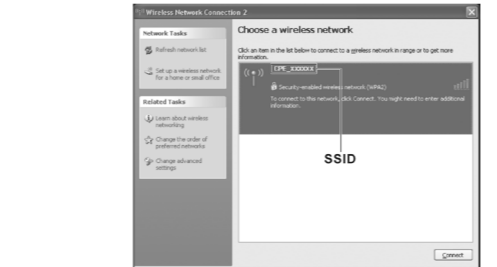
- Use your normal Wi-Fi application on the client to search for the available wireless network.



NOTE:

Please set the client to obtain an IP address automatically, and the client will get an IP address like "192.168.0.101".

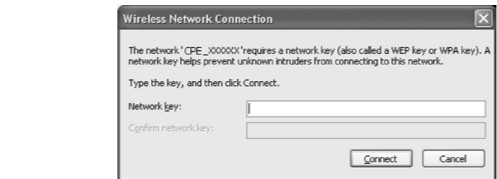
- Select the SSID of your device, and then click **Connect**.



NOTE:

Please check the label on your device to get the default SSID.

- Input the password and then click **Connect**.



NOTE:

You may need to input the password for Wi-Fi connection. Please check the label on your device to get the default password.

- Wait a moment, and then the client will connect to your device successfully.

Troubleshooting

Voice Related Problems

Symptoms	Possible Problems/ Solutions
No Dial Tone	<ul style="list-style-type: none"> Please wait for 1~2 minutes after the router is turned on. If SIG LED light is blinking, you have no good RF reception. Change the location of the router.
There is a prompt/ phone alert/ announce-ment as soon as I lift the phone off the hook.	Make sure your (U)SIM card is inserted correctly and the PIN number has been entered. If the PIN number has been entered incorrectly then you will need to enter the PUK code when prompted.
The line is noisy/ distorted when I lift the phone off the hook.	<ul style="list-style-type: none"> Remove any electrical appliance which is too close to the phone or your device. The cable or phone set might be faulty.
I hear a rapid engaged tone as soon as I lift the phone off the hook.	Put the phone on the hook and try again. If you are connected to the internet using the 2G (GSM) network, please disconnect this first.
After dialing the last digit I hear nothing /silence.	When you have finished dialing you can press the # key or wait 4-8 seconds to connect the call.

Internet Related Problems

Symptoms	Possible Problems/ Solutions
I cannot access the Internet at all.	<ul style="list-style-type: none"> Please check your configuration settings. Please wait 1~ 2 minutes for the router to initialize. Check your service indicators.

The download or upload speed is very slow.	The speed is dependent on signal strength. Check your signal strength and network type.
I cannot visit the 4G CPE page	<ul style="list-style-type: none"> Enter the correct address. The default address is http://192.168.0.1. Only use one network adapter in your PC. Do not use any proxy server.
I cannot establish the Wi-Fi connection between my device and the client.	<ul style="list-style-type: none"> Make sure the Wi-Fi function is active. Refresh network list and select the correct SSID. Check the IP address to make sure your client can obtain an IP address automatically in the Internet protocol (TCP/IP) properties. Type the correct network key (Wi-Fi password) when you connect to the device.

Others

Symptoms	Possible Problems/ Solutions
The 3G/4G signal indicator is always blinking or does not light.	<ul style="list-style-type: none"> This indicates poor reception. Try moving the router to another location near the window.
About the password	<ul style="list-style-type: none"> For the Wi-Fi connection password, please check the label on the device. The default password of the 4G CPE page is admin. If you changed the password and forgot the new password, you need to restore the device to the factory default settings.

Warning and Notice

Safety Precautions

- Some electronic devices may be susceptible to electromagnetic interference. Locate the router away from TV set, radio and other electronic equipment to avoid electromagnetic interference.
- The router may interfere with medical devices like hearing aids and pace-makers. Consult a physician or the manufacturer of the medical device before using the router.
- Please keep yourself at least 20 centimeters away from router.
- Do not use your router in dangerous environments such as oil terminals or chemical factories where there are explosive gases or explosive products being processed.
- Please use original accessories or accessories that are authorized by ZTE. Unauthorized accessories may affect the router performance, damage the router or cause danger to you.
- Do not attempt to dismantle the router. There are no user serviceable parts.
- Do not allow the router or accessories to come into contact with liquid or moisture at any time. Do not immerse the router in any liquid.
- Do not place objects on top of the router. This may lead to overheating of the device.
- The device must be placed in ventilation environment for use.
- Do not expose the router to direct sunlight or store it in hot areas. High temperature can shorten the life of electronic devices.
- Do not allow children to play with the router or charger.
- Keep the length of the cable between the router and the phone less than 10 meters.

- The router is for indoor use only. Do not use the router outside. Do not connect telephone extensions which run outside of the building. These can result in lightning damage to your unit.

Cleaning and Maintaining

- Use an antistatic cloth to clean the router. Do not use chemical or abrasive cleanser as these could damage the plastic case. Turn off your router before you clean it.
- Use the router within the temperature range of -10°C ~ +55°C, and the storage temperature range is -20°C ~ +65°C. The humidity range is 5%~95%.
- Do not use your router during a thunderstorm. Remove the mains power pack from the wall socket.
- Do not take out your (U)SIM card unnecessarily. The (U)SIM card may be easily lost or it can be damaged by static electricity.

Limited Warranty

- This warranty does not apply to defects or errors in the Product caused by:
 - Reasonable abrasion.
 - End User's failure to follow ZTE's installation, operation or maintenance instructions or procedures.
 - End User's mishandling, misuse, negligence, or improper installation, disassembly, storage, servicing or operation of the Product.
 - Modifications or repairs not made by ZTE or a ZTE-certified individual.
 - Power failures, surges, fire, flood, accidents, actions of third parties or other events outside ZTE's reasonable control.
 - Usage of third-party products, or usage in conjunction with third-party products provided that such defects are due to the combined usage.

- Any other cause beyond the range of normal usage intended for the Product.

End User shall have no right to reject or return the Product, or receive a refund for the Product from ZTE under the above-mentioned situations.

- This warranty is End User's sole remedy and ZTE's sole liability for defective or nonconforming items, and is in lieu of all other warranties, expressed, implied or statutory, including but not limited to the implied warranties of merchantability and fitness for a particular purpose, unless otherwise required under the mandatory provisions of the law.

Limitation of Liability

ZTE shall not be liable for any loss of profits or indirect, special, incidental or consequential damages resulting from or arising out of or in connection with using of this product, whether or not ZTE had been advised, knew or should have known of the possibility of such damages, including, but not limited to lost profits, interruption of business, cost of capital, cost of substitute facilities or product, or any downtime cost.

For more assistance, please:

- Send E-mail to mobile@zte.com.cn
- Visit www.ztedevice.com
- Call Service Hotline: **+86-755-26779999**

C € 0700