

## LEGAL INFORMATION

Copyright © 2013 ZTE CORPORATION.

All rights reserved.

No part of this publication may be excerpted, reproduced, translated or utilized in any form or by any means, electronic or mechanical, including photocopying and microfilm, without the prior written permission of ZTE Corporation.

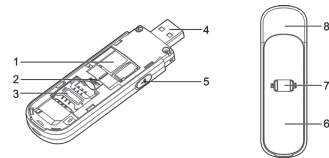
The manual is published by ZTE Corporation. We reserve the right to make modifications on print errors or update specifications without prior notice.

Version No. : R1.0

## Getting to Know Your Device

## Appearance

The following figure is only for your reference. The actual product may be different.



1. microSD Card Slot
2. RESET Button
3. SIM/USIM Card Slot
4. USB Connector
5. External Antenna Connector
6. Front Cover
7. Indicator
8. Device Cap

## NOTES:

- microSD logo  is a trademark of SD-3C, LLC.
- Please use the original external antenna if necessary.

## Indicator

Indicator	Status	Description
3G	Red solid	Turned on and not registered.
	Green solid	Registered to 2G.
	Green blinking	Connected to 2G and data is being transferred.
	Blue solid	Registered to 3G.
	Blue blinking	Connected to 3G and data is being transferred.
Wi-Fi	Blue blinking	Wi-Fi is Active.
	Blue solid	WPS is Active.
	LED off	Wi-Fi is off.

## Connection Scenario

Your device supports multi-clients for surfing on the Internet at the same time. The following figure is only for your reference.

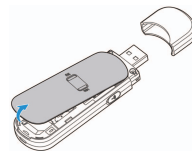
## TIP:

With other accessories, such as mobile power and car power adapter, you will be able to supply power to your device and use it anywhere and anytime.



## Installing Your Device

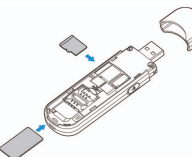
1. Open the front cover.



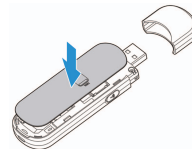
## NOTE:

Do not open the front cover rudely so as to avoid the damage of the front cover.

2. Insert the SIM/USIM card and microSD card.



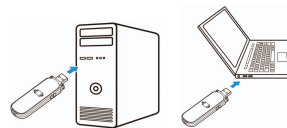
3. Close the front cover.



## Connecting to Your Device

## Via USB Connector

1. Plug the USB connector into the USB port and make sure it is tightly inserted.



2. The OS detects and recognizes new hardware and finishes the installation automatically.

## NOTE:

If the system does not launch installation automatically, you can run the installation program in path of **My Computer > ZTEMODEM**.

3. The WebGUI configuration page will open automatically, and then the client, your PC, will connect to your device successfully.

## Via Wi-Fi

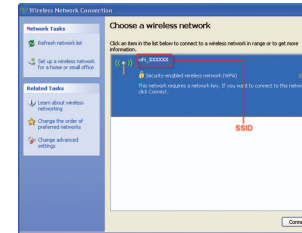
1. Supply power to your device by connecting to your PC or using other accessories.
2. Use your normal Wi-Fi application on the client to search the available wireless network.



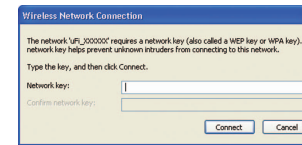
## NOTE:

Please set the client to obtain an IP address automatically referring to the chapter "Configuring your PC", and then the client will get an IP address like "192.168.0.100".

3. Select the SSID of your device, and then click **Connect**.



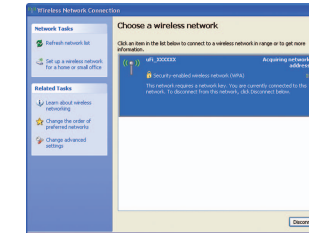
4. Input the password, and then click **Connect**.



## NOTE:

Password may be requested for Wi-Fi connection. Please check the body of your device to find the default information after opening the front cover.

5. Wait a moment, and then the client will connect to your device successfully.



## Accessing the Internet

After successfully connecting to your device, you can access the Internet in the **Automatic** or **Manual** mode. The default mode is **Automatic**.

Mode	Operations
Automatic	Your device will connect to the Internet automatically, and your clients can surf on the Internet directly.
Manual	Login the webGUI configuration page, and select <b>Settings &gt; 3G Settings &gt; Network Select &gt; WAN Connection Mode &gt; Manual</b> , click <b>Connect</b> or <b>Disconnect</b> .

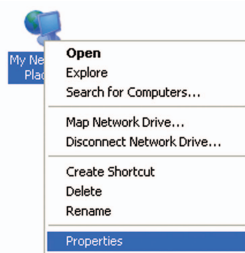
**NOTE:**

If you want to modify the detailed parameters of your device, please login the webGUI configuration page by visiting <http://192.168.0.1> or <http://m.home>. The default password is **admin**.

### Configuring Your PC

Follow the following steps and figures for Windows XP to configure the Internet Protocol for your Wi-Fi connection.

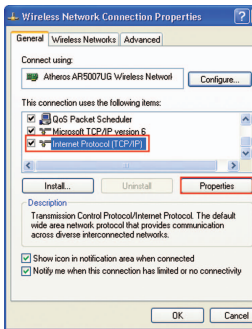
1. Right-click **My Network Places**, and then select **Properties**.



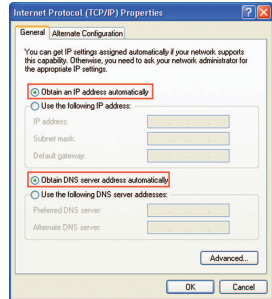
2. Right-click **Wireless Network Connection**, and then select **Properties**.



3. Select **Internet Protocol(TCP/IP)**, and then click **Properties**.



4. Select **Obtain an IP address automatically** and **Obtain DNS server address automatically**, and then click **Ok** to finish the configuration.



### Warning and Notice

#### To the Owner

- Some electronic devices are susceptible to electromagnetic interference sent by your device if inadequately shielded, such as the electronic system of vehicles. Please consult the manufacturer of your device before using if necessary.

- Operating your device may interfere with medical devices like hearing aids and pace-makers. Please always keep them more than 20 centimeters away from such medical devices when they are turned on. Turn your device off if necessary. Consult a physician or the manufacturer of the medical device before using your device.
- Be aware of the usage limitation when using your device at places such as oil warehouses or chemical factories, where there are explosive gases or explosive products being processed. Turn off your device if required.
- The use of electronic transmitting devices is forbidden in aircrafts, at petrol stations and in hospitals. Please observe and obey all warning signs and switch off your device in these conditions.
- Do not touch the inner antenna area if not necessary. Otherwise it will affect your device's performance.
- Store your device out of the reach of little children. Your device may cause injury if used as a toy.
- Do not touch the metallic parts of your device so as to avoid a burn, when your device is working.

### Using Your Device

- Please use original accessories or accessories that are authorized. Using any unauthorized accessories may affect your device's performance, and violate related national regulations about telecom terminals.
- Avoid using your device near or inside metallic structures or establishments that can emit electromagnetic waves. Otherwise it may influence signal reception.
- Your device is not waterproof. Please keep it dry and store in a shady and cool place.
- Do not use your device immediately after a sudden temperature change. In such case, it will produce dew inside and outside your device, so don't use it until it becomes dry.
- Handle your device carefully. Do not drop, bend or strike it. Otherwise your device will be damaged.
- No dismantling by non-professionals and only qualified technicians can undertake repair work.
- Operating temperature range of -10°C ~ +60°C and humidity range of 5% ~ 95% are recommended.

### Limited Warranty

- This warranty does not apply to defects or errors in the Product caused by:
    - i. Reasonable abrasion.
    - ii. End User's failure to follow ZTE's installation, operation or maintenance instructions or procedures.
    - iii. End User's mishandling, misuse, negligence, or improper installation, disassembly, storage, servicing or operation of the Product.
    - iv. Modifications or repairs not made by ZTE or a ZTE-certified individual.
    - v. Power failures, surges, fire, flood, accidents, actions of third parties or other events outside ZTE's reasonable control.
    - vi. Usage of third-party products, or usage in conjunction with third-party products provided that such defects are due to the combined usage.
    - vii. Any other cause beyond the range of normal usage intended for the Product.
- End User shall have no right to reject or return the Product, or receive a refund for the Product from ZTE under the above-mentioned situations.
- This warranty is End User's sole remedy and ZTE's sole liability for defective or non-

conforming items, and is in lieu of all other warranties, expressed, implied or statutory, including but not limited to the implied warranties of merchantability and fitness for a particular purpose, unless otherwise required under the mandatory provisions of the law.

### Limitation of Liability

ZTE shall not be liable for any loss of profits or indirect, special, incidental or consequential damages resulting from or arising out of or in connection with using of this product, whether or not ZTE had been advised, knew or should have known of the possibility of such damages, including, but not limited to lost profits, interruption of business, cost of capital, cost of substitute facilities or product, or any downtime cost.

### Troubleshooting

Problem	Suggested Solution
Can not establish the USB connection between your device and PC	<ul style="list-style-type: none"> <li>• You need to install the software. Run the installation program in path of <b>My Computer &gt; ZTEMODEM</b>.</li> <li>• If the driver of your device is abnormal, please reinstall the software. You need uninstall the software first.</li> </ul>

Problem	Suggested Solution
Can not establish the Wi-Fi connection between your device and client	<ul style="list-style-type: none"> <li>• Make sure the Wi-Fi function is active. Check the Wi-Fi indicator.</li> <li>• Refresh network list and select the correct SSID.</li> <li>• Check the IP address to make sure your client can obtain an IP address automatically in the Internet protocol (TCP/IP) properties.</li> <li>• Type the correct network key (Wi-Fi password) when you connect to the device.</li> </ul>
The client connected to the device can not access the Internet	<ul style="list-style-type: none"> <li>• Make sure your SIM card is available.</li> <li>• Change the location to find a place with good signal.</li> <li>• Check WAN Connection mode setting.</li> <li>• Contact with your service provider and confirm your APN settings.</li> </ul>

Problem	Suggested Solution
Can not visit the webGUI configuration page	<ul style="list-style-type: none"> <li>• Enter the correct address. The default address is <a href="http://192.168.0.1">http://192.168.0.1</a> or <a href="http://m.home">http://m.home</a>.</li> <li>• Only use one network adapter in your PC.</li> <li>• Do not use any proxy server.</li> </ul>
About the password	<ul style="list-style-type: none"> <li>• For the Wi-Fi connection password, please check the label on the device.</li> <li>• The default password of the webGUI configuration page is <b>admin</b>.</li> <li>• If you changed the password and forgot the new password, you need to restore the device to the factory default settings.</li> </ul>

For more assistance, please:

- Send E-mail to [mobile@zte.com.cn](mailto:mobile@zte.com.cn)
- Visit [www.ztedevice.com](http://www.ztedevice.com)
- Call Service Hotline: **+86-755-26779999**