

**Quick Start Guide 100MB (4G LTE)**  
MF820



Open size: 230mm(w) x 115mm(h)  
Folded size: 115mm(w) x 115mm(h)  
150 matt lamination art paper

**4G LTE**

**World's First LTE / DC-HSPA+  
Mobile Broadband Network**

**Quick Start Guide** SPEEDS UP TO 100 Mbps



0CC94J051101

**4G LTE Modem**

eng cover + chi cover + inside front & back cover  
total 4pp

**halloo!** Client: CSL Job No.: J7010010 Description: MF820 Quick Start Guide Scale: 100% Trimming size: 115mm(w) x 115mm(h) Cuts: 40 Screen Pts: 175 Sp Proofing paper: 150 matt lam Art paper Output Supplier: Date: 29 June 2011 Revision: 0 Account Service: Ruby Art Department: James Private And Confidential. All Right Reserved. Halloo Idea Station Ltd.

**Quick Start Guide 100MB (4G LTE)**  
MF820

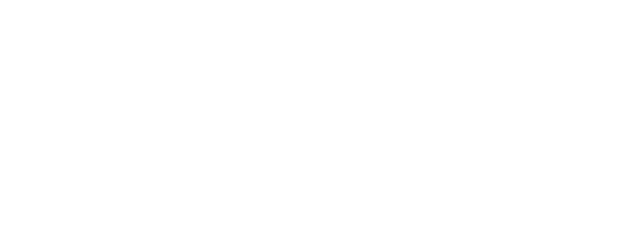


Open size: 230mm(w) x 115mm(h)  
Folded size: 115mm(w) x 115mm(h)  
150 matt lamination art paper

**4G LTE**

**World's First LTE / DC-HSPA+  
Mobile Broadband Network**

**Quick Start Guide** SPEEDS UP TO 100 Mbps



0CC94J051101

**4G LTE Modem**

eng cover + chi cover + inside front & back cover  
total 4pp

**halloo!** Client: CSL Job No.: J7010010 Description: MF820 Quick Start Guide Scale: 100% Trimming size: 115mm(w) x 115mm(h) Cuts: 40 Screen Pts: 175 Sp Proofing paper: 150 matt lam Art paper Output Supplier: Date: 29 June 2011 Revision: 0 Account Service: Ruby Art Department: James Private And Confidential. All Right Reserved. Halloo Idea Station Ltd.

# Quick Start Guide 100MB (4G LTE) MF820

Size: 115mm(w) x 115mm(h)  
90gsm matt art paper

## Content

1. Welcome
2. Product Introduction
3. 4 simple steps to get started
4. Installation & User Guide
  - (i) Set up your 4G LTE Modem
  - (ii) Connect 4G LTE Modem to your PC
  - (iii) Install the 4G LTE Connection Manager
  - (iv) Connect to 4G LTE Connection Manager
  - (v) System Information Area
  - (vi) LED Light Indication
5. Hints and Tips

P.1

halloo! Client : CSL Scale : 100% Output Supplier :  
Job No. : J1010010 Trimming size : 115mm(h) x 115mm(w) Date : 29 June 2011  
Description : MF820 Quick Start Guide Color : 4C Screen line : Revision : 0  
Account Service : Ruby Printing paper : 90 matt lam Art paper  
Art Department : James  
Private And Confidential. All Right Reserved. Halloo Bhs Station Ltd.

eng 14pp + chi 14pp  
total 28pp

# Quick Start Guide 100MB (4G LTE) MF820

## 1. Welcome

Welcome to the first fully integrated 4G LTE/DC-HSPA+ mobile broadband network in the world, a high speed mobile broadband service redefining the future of communication, information and entertainment on the go, faster than ever before.

## 2. Product Introduction

The 4G LTE Modem is a multi-mode USB modem, working in LTE / DC-HSPA+ / HSPA+ / HSPA / UMTS / EDGE networks. With USB interface connecting to a laptop or a desktop PC, you can browse the Internet, access online applications, send and receive emails or SMS.

Your package contains the following:

1. 4G LTE Modem
2. Quick Start Guide
3. USB Extension Cable
4. 1 Year Warranty Card

P.2

## 3. 4 simple steps to get started

Step 1. Insert SIM card to 4G LTE Modem.



Step 2. Plug the USB Modem to your computer.



Step 3. The 4G LTE Connection Manager will be started automatically. Follow the InstallShield Wizard prompts to install the software.



Step 4. The USB modem will automatically connect to the Internet. You can now enjoy your 4G LTE lifestyle mobile broadband.

Please note: If the 4G LTE Connection Manager does not start automatically, please refer to section 4: Installation & User Guide for manual start up.

P.3

eng 14pp + chi 14pp  
total 28pp

# Quick Start Guide 100MB (4G LTE) MF820

Open size: 230mm(w) x 115mm(h)  
Folded size: 115mm(w) x 115mm(h)  
90gsm matt art paper

## 4. Installation & User Guide

### (i) Set up your 4G LTE Modem

1. Remove the back cover on the modem.



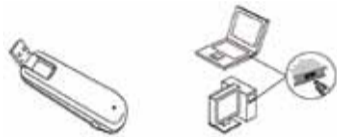
2. Hold your SIM card with the cut corner oriented as shown and then slide it into the card holder with the metal contacts facing the modem.



3. Replace the back cover.



4. Insert your modem as shown in the following figure. Rotate the USB connector and plug the modem firmly into a USB port on your computer.



P.4

### (ii) Connect 4G LTE Modem to your PC

1. The computer must be switched on and fully booted up. Plug in the USB modem.  
Please note: Your modem supports USB 2.0 version.
2. The computer will detect the new hardware and start the Install Wizard.
3. Follow the InstallShield Wizard prompts to complete the installation and will take a few minutes to complete.
4. If your security settings prevent autorun then you will have to start the process manually.

#### Windows® XP users

- a. Double click "My Computer" icon on your desktop.
- b. Double click the CD drive with 4G LTE icon to start the software installation.

#### Windows Vista® / Windows® 7 users

- a. Click "Start" and choose "Computer".
- b. Double click the CD Drive with 4G LTE icon to start the software installation.

#### Mac users : You will have to start the process manually.

- a. Open the CD-ROM : 4G LTE Modem.
- b. Double click "4G LTE Connection Manager".
- c. Reboot the system and the USB modem is ready for use.

5. Follow the Install Shield prompts to complete the installation. (Mac users will need to reboot the system.)

Please note: You are recommended to close all applications before software installation.

P.5

eng 14pp + chi 14pp  
total 28pp

# Quick Start Guide 100MB (4G LTE) MF820

Open size: 230mm(w) x 115mm(h)  
Folded size: 115mm(w) x 115mm(h)  
90gsm matt art paper

### (iii) Install the 4G LTE Connection Manager

#### System Requirements

The 4G LTE Modem is supported on:

- Windows® XP SP2
- Windows Vista®
- Windows® 7
- Mac OS X 10.6

Remarks: Mac and Mac OS are trademarks of Apple Inc.

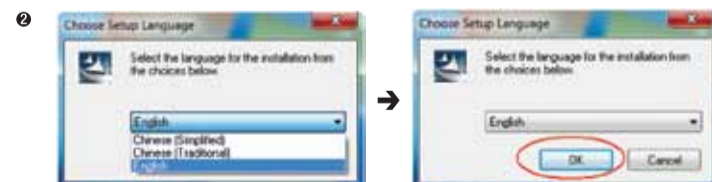
To install the modem software, you need:

- 1GB RAM
- 200MB free hard disk space

Follow the installation procedures as below. Screen shots are shown for Windows® 7 system. Other systems will follow a similar but not necessarily identical process.



Click "Run Install.exe" to continue



Choose your preferred language (e.g. English) and then click "OK"

P.6

P.7

eng 14pp + chi 14pp  
total 28pp

# Quick Start Guide 100MB (4G LTE) MF820

Open size: 230mm(w) x 115mm(h)  
Folded size: 115mm(w) x 115mm(h)  
90gsm matt art paper



Click "Next" to continue



Select "I accept the terms of the license agreement", and click "Next".



Click "Next" to accept the default location or press "Change" to specify your own path. The InstallShield Wizard takes a few minutes to complete.



Click "Finish" to complete

## Mac OS Installation

Follow the installation procedures as below (take Mac OS 10.6.7 as an example). Other systems will follow a similar but not necessarily identical process.

1. Uninstall all previous versions of the USB Modem software and restart the computer.
2. The installation program should launch automatically. If this feature is disabled on your computer, double click the CD drive that appears on your desktop and select "4G LTE Connection Manager".
3. Press "Continue" on the welcome page.
4. Press "Continue", then press "Agree" to accept the software license agreement.
5. Select a destination to install the software on the volume Macintosh HD, and then click "Continue".
6. At Installation Type, click "Install".
7. Enter user name and password to be authenticated, and left click "OK" to install.
8. Click "Close" to complete the installation process.

## Using your modem with Mac OS

Connect your modem to the computer. Your Computer will launch the Connection Manager application automatically. The modem will initialize and the main user interface will appear. If the application does not launch, double click "Finder" > "Applications" > "4G LTE" > "4G LTE Connection Manager" to run the software.

eng 14pp + chi 14pp  
total 28pp

# Quick Start Guide 100MB (4G LTE) MF820

Open size: 230mm(w) x 115mm(h)  
Folded size: 115mm(w) x 115mm(h)  
90gsm matt art paper

### (iv) Connect to 4G LTE Connection Manager

#### Program Startup

- Double click the shortcut icon on the desktop.
- Alternatively, you can select "Start" > "All Programs" > "4G LTE Connection Manager" > "4G LTE Connection Manager".

#### Software Overview



	Connect / Disconnect - Connect or disconnect the Internet via USB modem.
	SMS - Send, receive and manage your SMS.
	Phonebook - Create and manage your contact either on the PC or your SIM card.
	Settings - Set the configuration for the USB modem.
	Data Records - Measure data usage.
	Speed Upgrade - Upgrade to a higher speed service plan.
	Help - Help Topics.

### (v) System Information Area




	The antenna icon indicates network signal strength from none to the strongest.
	The SMS icon indicates when there are new SMS.
	The Service Provider icon indicates the name of the current network provider.
	Modem status: No Device Detected, Device Inserted, Data Not Connected, Connecting, Please Wait, Data Connected, Disconnecting.
	Transfer Time
	Amount of Data Uploaded
	Amount of Data Downloaded

eng 14pp + chi 14pp  
total 28pp

# Quick Start Guide 100MB (4G LTE) MF820

Open size: 230mm(w) x 115mm(h)  
Folded size: 115mm(w) x 115mm(h)  
90gsm matt art paper

## (vi) LED Light Indication

LED Light Status	Indication
Solid Green 	LTE / DC-HSPA+ / HSPA+ / HSPA / UMTS / EGDE Registered
Blinking Green 	LTE / DC-HSPA+ / HSPA+ / HSPA / UMTS / EGDE Registered and Data Transmission
Red 	Power on, Not Registered on the LTE / DC-HSPA+ / HSPA+ / HSPA / UMTS / EDGE

## 5. Hints & Tips

- The user interface does not start after the USB modem is plugged in**  
Tips: Start the program manually by clicking "Start" > "All Programs" or use the shortcut on the desktop.
- The modem has no signal**  
Tips: Adjust the angle and position of the USB modem.
- Data connection failed**  
Tips: Check if your APN configuration is correct in the profile.
- The modem cannot connect to the Internet when abroad**  
Tips: You do not have roaming enabled on your plan.
- Unable to send POP3 emails using USB Modem connection**  
Tips: If you are a 4G LTE customer, you can use 4G LTE SMTP service. Simply change the outgoing server address to [mail.cs1010.com](mailto:mail.cs1010.com) (1010) / [mail.one2free.com](mailto:mail.one2free.com) (one2free).  
Please note: if you still cannot send emails, this may be caused by firewall access control in your PC. Please consult your PC support.

P.12

P.13

eng 14pp + chi 14pp  
total 28pp

# Quick Start Guide 100MB (4G LTE) MF820

Size: 115mm(w) x 115mm(h)  
90gsm matt art paper

- Service and transmission speed are subject to coverage and connectivity conditions of the network.
- For general enquiries, please call our hotline at +852 2888 1010 (1010)  
+852 25 123 123 (one2free)

For technical support, please call our hotline at +852 3447 9099

For repair service, please visit

NEC Mobile LTD

Room 1, 19 Floor, Righteous Centre, 585 Nathan Road,

Mongkok, Kowloon, HK (opposite to Sino Centre)

Service Hotline: +852 2110 3285

Please note: Screenshots and information contained in this Quick Start Guide may vary from the actual product and are subject to changes without prior notice.

P.14

eng 14pp + chi 14pp  
total 28pp

# Quick Start Guide 100MB (4G LTE) MF820

Size: 115mm(w) x 115mm(h)  
90gsm matt art paper

## 目錄

1. 歡迎
2. 產品介紹
3. 簡易使用四步曲
4. 安裝及使用指南
  - (i) 設置4G LTE 流動數據器
  - (ii) 將4G LTE 流動數據器連接至個人電腦
  - (iii) 安裝軟件
  - (iv) 連接4G LTE Connection Manager
  - (v) 系統訊息
  - (vi) LED指示燈
5. 提示與技巧

P.1

eng 14pp + chi 14pp  
total 28pp

# Quick Start Guide 100MB (4G LTE) MF820

Open size: 230mm(w) x 115mm(h)  
Folded size: 115mm(w) x 115mm(h)  
90gsm matt art paper

## 1. 歡迎

歡迎使用4G LTE / DC-HSPA+既全面又極速的流動寬頻網絡，從此通訊聯繫、接收資訊及享用娛樂，都可倍添無限快感，進入高速的流動世界。

## 2. 產品介紹

4G LTE 流動數據器為支援多種通訊制式之USB 流動數據器，分別支援LTE / DC-HSPA+ / HSPA+ / HSPA / UMTS / EDGE制式的流動網絡。

只需將此數據器通過USB埠位連接至筆記簿或桌上型個人電腦，你即可瀏覽網頁、使用各種網上應用程式、收看影片、收發電郵及短訊。

本產品套裝包括：

1. 4G LTE 流動數據器
2. 快速入門指南
3. USB延長線
4. 1年保用證

## 3. 簡易使用四步曲

第一步，將SIM卡插入4G LTE 流動數據器。



第二步，將USB 流動數據器連接電腦。



第三步，4G LTE Connection Manager程式會自動開啟，並按照 InstallShield 安裝精靈指示安裝軟件。



第四步，USB 流動數據器會自動連線上網。你可體驗4G LTE 你的流動寬頻。

注意：若4G LTE Connection Manager並沒有自動開啟，請參考下一頁第四部份之「安裝及使用指南」並以手動安裝。

P.2

P.3

eng 14pp + chi 14pp  
total 28pp

#### 4. 安裝及使用指南

##### (i) 設置 4G LTE 流動數據器

1. 從流動數據器末端的缺口處將前蓋打開並提起蓋子。

▲注意：扣起流動數據器前蓋時請勿用力過大，否則可能損壞蓋子。



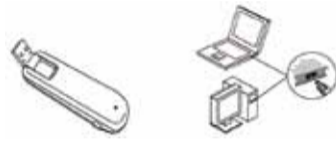
2. 將SIM卡按照下圖所示方法放入流動數據器。卡上有金屬觸點的一面要朝下。



3. 按照下圖所示方法將流動數據器前蓋放在流動數據器上，然後向下按蓋子直至完全卡住。



4. 按照右圖所示方法將流動數據器插入電腦的USB口。如果使用USB線連接，用USB連接線的兩個埠分別連接流動數據器和電腦。



P.4

##### (ii) 將 4G LTE 流動數據器連接至個人電腦

1. 啟動電腦並確定完全載入系統，插上USB流動數據器。  
注意：USB流動數據器支援USB2.0。

2. 電腦自動偵察到新硬體，隨即啟動安裝精靈。

3. 按照安裝提示完成整個安裝程序，需時的數分鐘完成。

4. 如果電腦的安全設定不容許安裝程式自動執行(Autorun)，請改以手動進行安裝。

###### Windows® XP用戶

- 連續兩次點擊電腦桌面上之「我的電腦」圖示。
- 連續兩次點擊附有4G LTE圖示的CD光碟機進行安裝。

###### Windows Vista® / Windows® 7 用戶

- 點擊「開始」，選擇「電腦」。
- 連續兩次點擊附有4G LTE圖示的CD光碟機進行安裝。

###### Mac機用戶：你須以手動進行安裝

- 開始CD-ROM：4G LTE流動數據器。
- 連續兩次點擊「4G LTE Connection Manager」圖示。
- 重新啟動系統以享用USB流動數據器帶來的極速享受。

5. 按照安裝程序完成安裝。(Mac機用戶須重新啟動系統。)

注意：我們建議你於安裝軟件前先關閉所有應用程式。

P.5

eng 14pp + chi 14pp  
total 28pp

##### (iii) 安裝軟件

###### 系統要求

4G LTE 流動數據器支援以下作業系統：

- Windows® XP SP2
- Windows Vista®
- Windows® 7
- Mac OS X 10.6

註：Mac及Mac OS為Apple Inc.的商標。

###### 安裝USB流動數據器軟件之硬件建議

- 1GB 記憶體
- 200MB 的可用磁碟空間

P.6

安裝程序如下，圖中之畫面為Windows® 7作業系統。其他系統安裝程序類似，過程卻不一定完全相同。



按「執行setup.exe」繼續



選擇安裝語言(如:中文(繁體))然後按「確定」

P.7

eng 14pp + chi 14pp  
total 28pp

# Quick Start Guide 100MB (4G LTE) MF820

Open size: 230mm(w) x 115mm(h)  
Folded size: 115mm(w) x 115mm(h)  
90gsm matt art paper



按「下一步」繼續。



選擇「我接受授權合約的條款」，點擊「下一步」。



按「下一步」確定安裝目的地或按「變更」選擇你指定的路徑。精靈需要數分鐘完成安裝。



按「完成」完成安裝。

P.8

## Mac OS 安裝程序

安裝程序如下(以Mac OS 10.6.7作業系統為例)。其他系統安裝程序類近，過程卻不一定完全相同。

1. 移除所有USB數據器軟件之舊有版本及重新啟動電腦。
2. 電腦會自動執行安裝程式。如這項功能未啟動，在桌面連續兩次點擊CD硬盤，選取「4G LTE Connection Manager」。
3. 在歡迎版面按「繼續」。
4. 點擊「繼續」，再點擊「同意」接受軟件許可協議。
5. 在Macintosh HD選取安裝軟件的位置，點擊「繼續」。
6. 選取安裝種類，然後點擊「安裝」。
7. 輸入用戶名稱及密碼作認證，再點擊「OK」進行安裝。
8. 點擊「關閉」完成安裝程序。

## 以Mac OS 使用你的數據器

連接你的數據器至電腦，你的電腦會自動執行Connection Manager程式，數據器初始及主要用戶介面會出現。如程式未能自動執行，連續兩次點擊「搜尋」>「程式」>「4G LTE」>「4G LTE Connection Manager」以執行程式。

P.9

eng 14pp + chi 14pp  
total 28pp

# Quick Start Guide 100MB (4G LTE) MF820

Open size: 230mm(w) x 115mm(h)  
Folded size: 115mm(w) x 115mm(h)  
90gsm matt art paper

## (iv) 連接4G LTE Connection Manager

### 啟動程式

- 連續兩次點擊桌面上之捷徑或按一下「開始」>「程式集」>「4G LTE Connection Manager」>「4G LTE Connection Manager」以啟動程式。

### 軟件簡介



	連接上網 — 以USB流動數據器連接上網或中止連線。
	短訊 — 發送、接收及管理短訊。
	電話簿 — 建立及管理電腦上或SIM卡上之聯絡人。
	設定 — USB流動數據器的設定內容。
	數據記錄 — 記錄數據流量和流速。
	速度升級 — 升級至更高服務計劃。
	說明 — 說明主題。

P.10

## (v) 系統訊息

	天線圖示表示網絡訊號之接收強弱，從完全沒有至最強訊號。
	短訊圖示出現，表示已接收新短訊。
	服務供應商圖示，顯示目前網絡供應商之名稱。
	顯示目前數據狀態，包括未檢測到設備、設備已插入、網絡未連接、正在連接、請稍候、連接成功、正在斷開連接。
	傳輸時間
	上傳數據流量
	下載數據流量

P.11

eng 14pp + chi 14pp  
total 28pp



## Quick Start Guide 100MB (4G LTE) MF820

Open size: 230mm(w) x 115mm(h)  
Folded size: 115mm(w) x 115mm(h)  
90gsm matt art paper

### (vi) LED指示燈

LED指示燈狀態	說明
穩定的綠色 ●	註冊在LTE / DC-HSPA+ / HSPA+ / HSPA / UMTS / EGDE 網絡
閃爍的綠色 ●	註冊在LTE / DC-HSPA+ / HSPA+ / HSPA / UMTS / EGDE 網絡及數據傳輸中
穩定的紅色 ●	電源已開啟，並未註冊在LTE / DC-HSPA+ / HSPA+ / HSPA / UMTS / EDGE

P.12

### 5. 提示與技巧

1. 插入USB流動數據器後，用戶介面無法啟動  
提示：請改以手動啟動程式，按一下「開始」>「所有程式」，然後選擇所需程式，或點選桌面上之捷徑圖示。
2. 流動數據器接收不到訊號  
提示：調整USB流動數據器角度和方向。
3. 數據連接失敗  
提示：檢查配置檔內之APN資料是否正確。
4. 身處國外時，流動數據器無法連線  
提示：閣下選用之電訊服務，未有啟動漫遊功能。
5. 無法使用USB流動數據器以POP3協定發送電子郵件  
提示：假如閣下是4G LTE客戶，你可使用4G LTE的SMTP伺服器來發送郵件。你只需將外寄郵件伺服器之位址名稱設定為 [mail.csl1010.com](mailto:mail.csl1010.com) (1010) / [mail.one2free.com](mailto:mail.one2free.com) (one2free)。  
注意：如果你仍未能發送電子郵件，原因可能是個人電腦的防火牆設定了存取的限制。請聯絡你的個人電腦的支援人員。

P.13

eng 14pp + chi 14pp  
total 28pp

## Quick Start Guide 100MB (4G LTE) MF820

Size: 115mm(w) x 115mm(h)  
90gsm matt art paper

6. 服務及傳輸速度受到網絡之覆蓋及連接條件的影響。
7. 有關一般查詢，請致電熱線 +852 2888 1010 (1010)  
+852 25 123 123 (one2free)  
有關技術支援，請致電熱線 +852 3447 9099  
保養維修服務，請親臨  
日本電氣移動通信有限公司  
香港旺角彌敦道585號富時中心19樓1室(信和中心對面)  
服務熱線：+852 2110 3285  
注意：本快速入門指南之圖示及資料可能與實際產品有所不同，若有更改恕不另行通知。

P.14

eng 14pp + chi 14pp  
total 28pp