

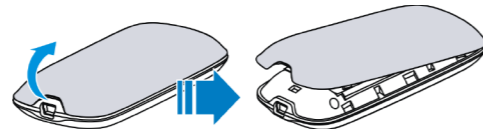
## Getting started with your device.

# Let's go

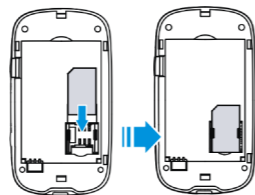
### Internet Access

#### 1. Installing Hardware

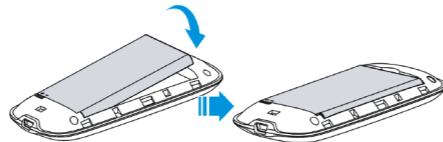
1). Open the cover.



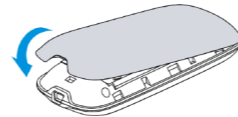
2). Insert SIM card.



3). Insert the battery.



4). Close the cover



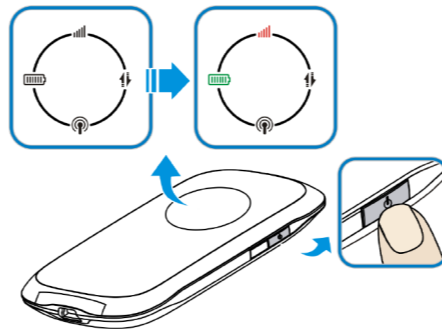
Notes:

Continuously press the **Power** button five times within 5 seconds, the device will restart automatically and restore to the factory default settings.

#### 2. Establishing a Connection

##### A. Wi-Fi Connection

1). Power on your device.

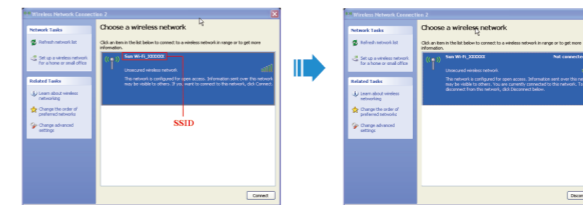


2). Use your normal Wi-Fi application on the client to search the available wireless network, when the Wi-Fi LED is blinking.

Notes:

You need to check your Wireless Network Connection. Set the client to obtain an IP address automatically in the Internet protocol (TCP/IP) properties, and the client will get an IP address like "192.168.0.100".

3). Select the SSID of your device, and then click **Connect**.



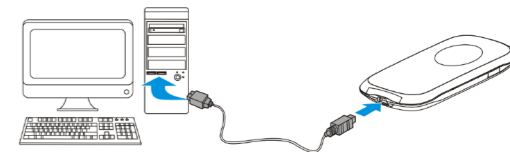
Notes:

If you modify the security mode, there will be a pop-up window to require the password. Please enter the WPA Key preset by you.

4). Wait a moment, the Wi-Fi connection is established.

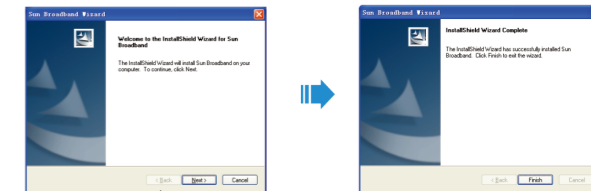
##### B. USB Connection

1). Connect to the device.



2). Power on your device.

3). Follow the system prompts to complete the software installation.



4). Wait a moment, the USB connection is established.

### 3. Accessing the Internet

After successfully establishing the connection, access the Internet in any of the three modes. The default mode is **Always On**.

Mode	Operations
Always On	After power on your device, it can automatically connect to the Internet.
Manual	Login the webGUI configuration page, the default password is <b>admin</b> , and set <b>Connect Internet</b> or <b>Disconnect Internet</b> manually on <b>WAN Connection</b> page.
On Demand	When data transmission is required, your device can automatically connect to the Internet. If data transmission is not performed over a period of time, your device will disconnect from Internet automatically.

Notes:

If you want to modify the detailed parameters of your device, please login the webGUI configuration page by visiting <http://192.168.0.1> or <http://ufi.home>.

### ZTE CORPORATION

NO. 55, Hi-tech Road South, ShenZhen, P.R.China

Postcode: 518057

### Troubleshooting Tips

Problem	Suggested Solution
Can not establish the USB connection between your device and PC	<ol style="list-style-type: none"><li>1. You need install the software. Run the installation program in path of <b>My Computer &gt; Sun Broadband</b>.</li><li>2. If the driver of your device is abnormal, please install the software again. You need uninstall the software first.</li></ol>
Can not establish the Wi-Fi connection between your device and client	<ol style="list-style-type: none"><li>1. Make sure Wi-Fi LED is blue blinking.</li><li>2. Refresh network list and select the correct SSID.</li><li>3. Check the IP address to make sure your client can obtain an IP address automatically in the Internet protocol (TCP/IP) properties.</li><li>4. Type the correct network key when you connect to the device.</li></ol>

The client connected to the device can not access the Internet	1. Make sure your SIM card is available.
	2. Change the location to find a place with good signal.
	3. Check WAN Connection mode setting.
	4. Contact with your service provider and confirm your APN settings.
Can not visit the webGUI configuration page	1. Enter the correct address. The default address is <a href="http://192.168.0.1">http://192.168.0.1</a> or <a href="http://ufi.home">http://ufi.home</a>
	2. Only use one network adapter in your PC.
	3. Do not use any proxy server.
About the password	1. For the webGUI configuration page password, the default password is <b>admin</b> .
	2. If you changed the password, and forgot the new password. You need to restore the device to the factory default settings.

For more assistance, please:

- Sending E-mail to [mobile@zte.com.cn](mailto:mobile@zte.com.cn)
- Visiting <http://www.zte.com.cn>
- Calling Service Hotline: **+86-755-26779999**

**C € 1588** 

The information on the package is only for your reference. Images are for your reference only. Please check the product model before purchasing.

ZTE reserves the rights to change specifications and parameters of the products without further notice.