

SINGAPORE Office (Head Quarter)
FIDA INTERNATIONAL (S) PTE LTD
Web: +65 6377 5666
Email: support@fida.com

Malaysia Office
FIDA SYSTEMS (M) SDN BHD
Web: +60 3 803 9151
Email: support@fida.com

INDONESIA Office
PT PROLINK INTERTATA NUSANTARA
Web: +62 21 3488 1717
Email: support@prolink.co.id

Technical Support Hotline
SINGAPORE: +65 6377 5666
MALAYSIA: +60 3 803 9151
INDONESIA: +62 21 3488 1717
VIETNAM: +84 942 274 727

Note: Closed on Saturdays, Sundays and local/regional Public Holidays.

Register Online For Your Product Warranty @ www.prolink2u.com/register

PROLINK® is a trademark of FIDA INTERNATIONAL (S) PTE LTD and is manufactured under its authority. All other brands, products, services, logos and company names mentioned herein are trademarks of their respective owners. All specifications, designs and contents are subject to changes without prior notice. © Copyright 2011. PROLINK® all rights reserved.



Quick Installation Guide

BEFORE GETTING STARTED

This QIG is designed to aid you to get started with the device. If you experience problems following these guides or need further information pertaining to the device, please visit our website at www.prolink2u.com. All specifications are subject to the manufacturer's configuration at the time of shipping and may change without prior notice, written or otherwise.

USB HSPA Modem with Micro-SD Slot
Version 7.00
(English / Indonesian / Vietnamese)

1. Package Contents

1 PHS300 USB Modem



2 Quick Installation Guide

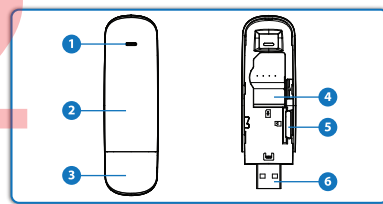


Note:
1 The illustrations in this document may appear different from your model.
2 If any of above item is not packed in your package when open, please consult your reseller immediately.

2. Getting Know Your Device

The following figure shows the appearance of the device:

- 1 Indicator
- 2 Front Cover
- 3 Modem Cap
- 4 SIM/USIM Card Slot
- 5 microSD Card Slot
- 6 USB Connector

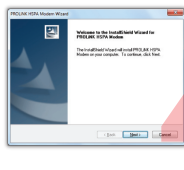


EN 1

4. Software Installation

1. Plug the USB Modem into the USB port on the PC or Laptop.

2. Wait for approximately 10-30 seconds then OS will automatically detect and recognize new hardware, starts the installation wizard. When you see the following window, please click on **Next** button to proceed the installation.



3. The Connection Manager - **PROLINK HSPA Modem**, shortcut will be created on the desktop.



5. Connect to the Internet

Click on the **Connect** button to connect to the internet.

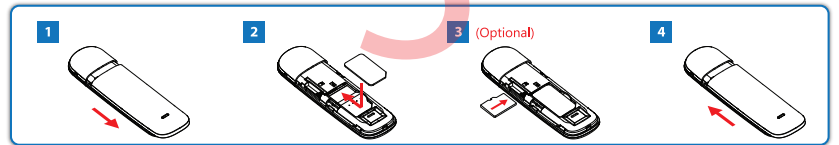


Note:
If your SIM card can't be detected by the utility automatically, you need to create a new profile.

EN 3

3. Hardware Installation

- 1 Slide the front cover and remove it.
NOTE: DO NOT open the front cover rudely so as to avoid the damage of the front cover.
- 2 Insert the SIM/USIM card into the SIM/USIM card slot where the metal contact area facing downwards into the slot, and then push SIM/USIM card as far as possible.
- 3 Insert the microSD card into the microSD card slot if you have it (Optional)
NOTE: This modem only supports microSD card.
- 4 Slide back the front cover and lock the cover in its place.

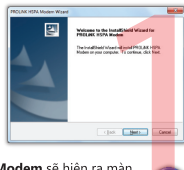


EN 2

4. Cài Đặt Phần Mềm

1. Gắn USB Modem vào cổng USB trên máy tính hoặc Laptop.

2. Đợi khoảng 10-30 giây hệ điều hành sẽ tự động cài đặt và nhận phần cứng mới. Khi đó bạn sẽ thấy một cửa sổ mới xuất hiện, bạn hãy ấn nút **Next** để thực hiện việc cài đặt.



3. Biểu tượng **PROLINK HSPA Modem** sẽ hiện ra màn hình desktop của bạn.



5. Kết nối Internet

Bấm vào nút **Connect** để kết nối internet.



Ghi Chú:
Nếu thẻ SIM của bạn không tự động nhận, bạn cần khởi tạo một cấu hình mới cho việc kết nối.

VN 3

6. Create a new Profile

- 1 Click on **Settings** icon on the Utility, then click **Add** button under connection.
- 2 Click on **New**, type your Profile Name, Dial Number, APN (Use the following APN address), User Name and Password (if needed), then click on **Save** button to save it.
- 3 After saved, click on **Apply** button to make it as Default profile.
- 4 Close the settings windows, then click **Connect** button to connect to the internet.



EN 4

1. Isi Perangkat

1 PHS300 USB Modem



2 Lembar Panduan Instalasi

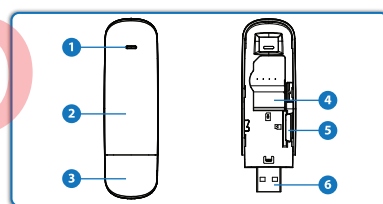


Catatan:
1 Ilustrasi dalam dokumen ini mungkin tampak berbeda dari model anda.
2 Jika salah satu item di atas tidak dikemas dalam paket anda ketika terbuka, silakan berkonsultasi dengan reseller anda segera.

2. Mengenal Perangkat Anda

Gambar berikut ini menunjukkan tampilan dari perangkat anda:

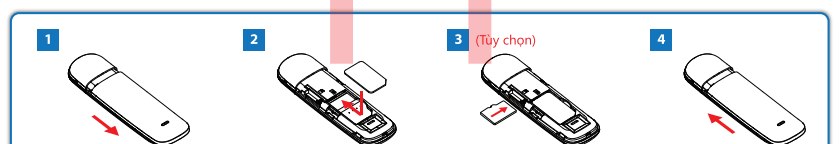
- 1 Indikator
- 2 Cover Depan
- 3 Tutup Modem
- 4 Slot kartu SIM/USIM
- 5 Slot kartu microSD
- 6 Konektor USB



ID 1

3. Cài Đặt Phần Cứng

- 1 Kéo nắp phía trên và tháo ra.
Ghi Chú: KHÔNG ĐƯỢC mở mạnh tay quá vì điều này có thể làm hư nắp đậy.
- 2 Gắn thẻ SIM/USIM vào khe chứa, bạn hãy lưu ý gắn theo đúng chiều qui định.
- 3 Nếu bạn có thẻ microSD bạn có thể cắm vào khe microSD (Tùy chọn).
Ghi Chú: Chỉ hỗ trợ loại thẻ microSD.
- 4 Gắn lại nắp đậy và khớp các mẫu nối.



VN 2

1. Trong Hộp Gồm

1 PHS300 USB Modem



2 Hướng Dẫn Cài Đặt Nhanh

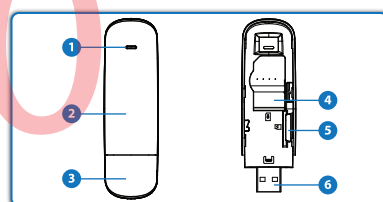


Ghi Chú:
1 Các minh họa trong tài liệu này có thể xuất hiện khác nhau từ mô hình của bạn.
2 Nếu bất kỳ thiết bị trên không có trong hộp của bạn khi mở, vui lòng tham khảo các đại lý bán lẻ của bạn ngay lập tức.

2. Bắt Đầu Với Thiết Bị

Mô tả các điểm cần thiết trên thiết bị:

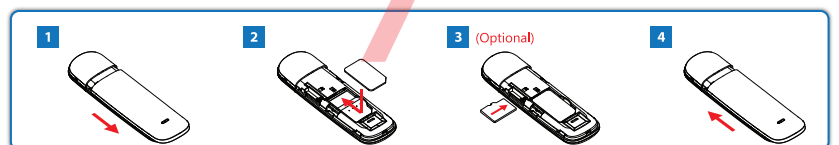
- 1 Đèn tín hiệu
- 2 Nắp dây phía trên
- 3 Nắp đậy
- 4 Khay đựng SIM/USIM
- 5 Khe gắn thẻ microSD
- 6 Đầu gắn USB



VN 1

3. Instalasi Perangkat

- 1 Geser tutup depan dan lepaskan.
CATATAN: JANGAN buka penutup depan modem dengan kasar, agar terhindar dari kerusakan dari penutup depan.
- 2 Masukkan kartu SIM / USIM ke dalam slot kartu SIM / USIM dimana bidang kontak logam menghadap ke bawah ke slot, dan kemudian mendorong kartu SIM / USIM sejauh mungkin.
- 3 Masukkan kartu microSD kedalam slot card microSD jika anda memilikinya (Optional).
CATATAN: Modem ini hanya mendukung kartu jenis microSD.
- 4 Geser kembali penutup depan dan kunci pada posisinya.

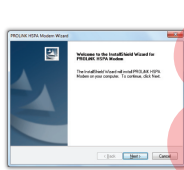


ID 2

4. Instalasi Perangkat Lunak

1. Sambungkan USB Modem ke port USB pada PC atau Laptop anda.

2. Tunggu sekitar 10-30 detik lalu OS akan secara otomatis mengenali perangkat baru, dan memulai instalasi. Ketika Anda melihat window berikut, silahkan klik tombol **Next** untuk memulai proses instalasi.



3. Shortcut Connection Manager - **PROLINK HSPA Modem** akan muncul pada desktop.



5. Koneksi Ke Internet

Tekan tombol **Connect** untuk dapat terkoneksi ke Internet anda.

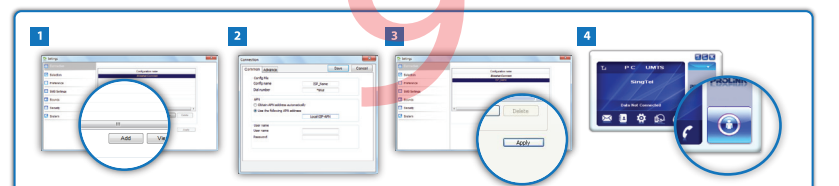


Catatan:
Jika kartu SIM anda tidak dapat terdeteksi oleh utility secara otomatis, maka anda harus membuat profil baru.

ID 3

6. Membuat Profile Baru

- 1 Pilih icon **Settings** pada Utility, lalu tekan tombol **Add** dibawah connection.
- 2 Pilih **New**, masukkan nama Profile, Dial Number, APN (Gunakan alamat APN berikut), User Name dan Password (Jika diperlukan), lalu tekan tombol **Save** untuk menyimpan.
- 3 Setelah tersimpan, tekan tombol **Apply** untuk di jadikan Default profile.
- 4 Tutup jendela settings, lalu tekan tombol **Connect** untuk dapat terkoneksi ke Internet.



ID 4