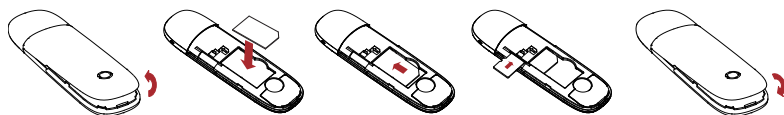
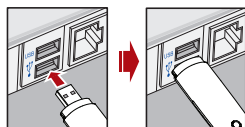


Hardware installation guide

1) Insert the SIM/USIM card and the microSD card into the USB modem.



2) Connect the USB modem to your PC.



Software installation guide

After the hardware installation, the OS automatically detects and recognizes new hardware and starts the installation wizard. On different operating systems, the installation procedures may differ. Follow the system prompts to complete the software installation.









Know your modem status

You can know the modem status through the indicator. Please refer the table below.

LED Indicator	USB Modem Working Status
Red	Power on. Not registered on the 2G or 3G network
Green solid	Registered on the 2G or 3G network
Green blinking	Active connection via 2G or 3G network

How to use your modem

Various icons are presented to enable quick operation of the following functions:

	Home	Show the welcome page.
	Internet	Click " Connect " button to connect to the Internet.
	Short Message	Click " New Message " button, enter recipient's number and content, and then click " Send " to send new message.
	Phonebook	Click " New " → " New Contact " to add a new contact.
	Settings	Set the configuration for the USB modem.
	My Balance	Check the balance of your account.
	Recharge	Recharge your account.
	Help	Show the help information.