

ZTE K3806-Z

HSDPA USB Modem

Quick Guide

ZTE CORPORATION
ZTE Plaza, Keji Road South,
Hi-Tech Industrial Park,
Nanshan District, Shenzhen,
P. R. China
518057
Tel: (86) 755 26779999
URL: <http://www.zte.com.cn>
E-mail: mobile@zte.com.cn

LEGAL INFORMATION

Copyright © 2011 ZTE CORPORATION.

All rights reserved.

No part of this publication may be excerpted, reproduced, translated or utilized in any form or by any means, electronic or mechanical, including photocopying and microfilm, without the prior written permission of ZTE Corporation.

The manual is published by ZTE Corporation. We reserve the right to make modifications on print errors or update specifications without prior notice.

Version No.: R1.0

Edition Time: March 2011

Manual No.: 07958450XXXX

Contents

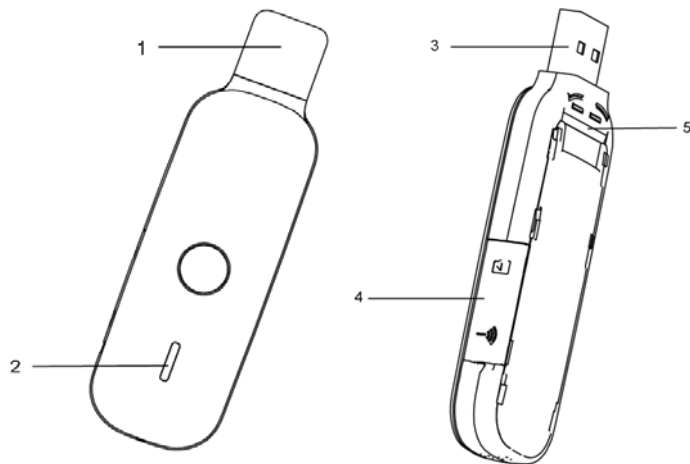
Contents.....	3
Introduction.....	4
Hardware Installation.....	4
Outline and Parts.....	4
Inserting the (U)SIM Card.....	4
Inserting the microSD Card.....	5
Connecting to Your Computer.....	5
Software Installation.....	5
For Windows OS.....	6
Installation.....	6
Uninstall.....	7
For MAC OS.....	8
Installation.....	8
Uninstall.....	10
For Linux OS.....	10
Installation.....	10
Uninstall.....	12
How to Use Your Modem.....	12
Warning and Notice.....	13
To the owner.....	13
Using your USB Modem.....	13
Limited Warranty.....	13
Limitation of Liability.....	14
How to get help.....	14

Introduction

The ZTE K3806-Z USB modem is a multi-mode, 3G USB modem, working in mobile networks. With USB interface connecting to a laptop or a desktop PC, it integrates the functionality of a modem and a mobile phone (SMS), and combines mobile communication with Internet perfectly. It supports data and SMS services through the mobile phone network, enabling you to communicate anytime and anywhere.

Hardware Installation

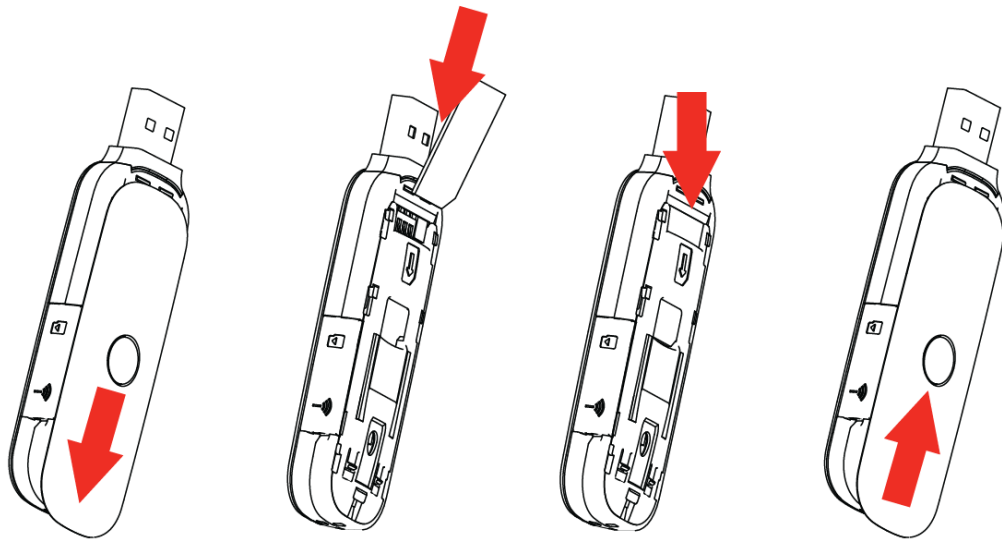
Outline and Parts



1. Modem cap
2. Indicator
3. USB connector
4. Memory card slot (microSD card)
5. (U)SIM card socket

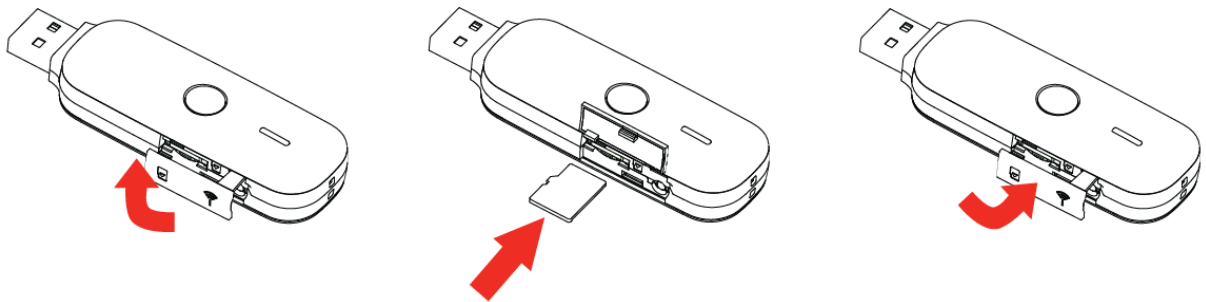
Inserting the (U)SIM Card

1. First take off the modem cap.
2. Take off the front cover of the modem.
3. Insert the (U)SIM card into the socket.
4. Take on the front cover of the modem.



Inserting the microSD Card

1. Open the microSD card cover.
2. Insert the microSD card into the slot.



3. Close the microSD card slot cover.

NOTE Notes:

microSD  is a trademark of SD Card Association.

Connecting to Your Computer

1. Take off the modem cap.
2. Plug the USB modem into your computer's USB port and make sure that it is tightly inserted.

The OS automatically detects and recognizes new hardware and starts the installation wizard.

Software Installation

On different operating systems, the installation and removal procedures may differ. Follow the system prompts during operation.

For Windows OS

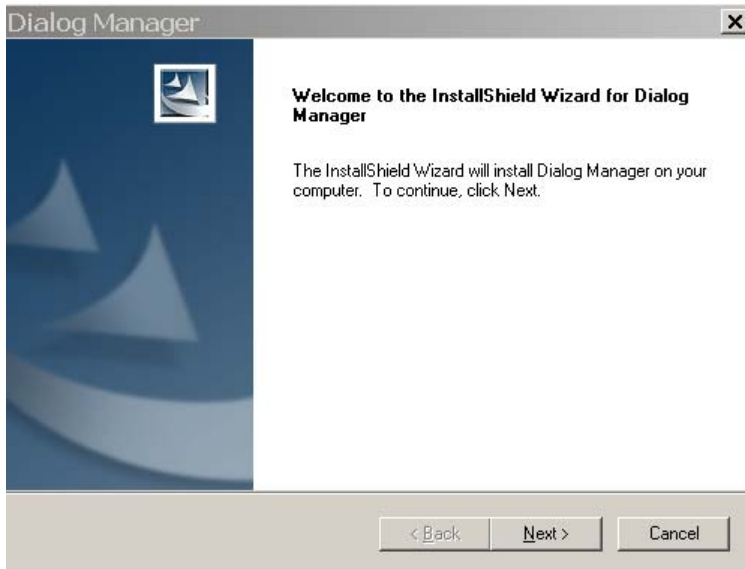
Installation

1. Your system will start the software setup process automatically when you connect the modem to your computer correctly. Follow the system prompts to complete the software installation.

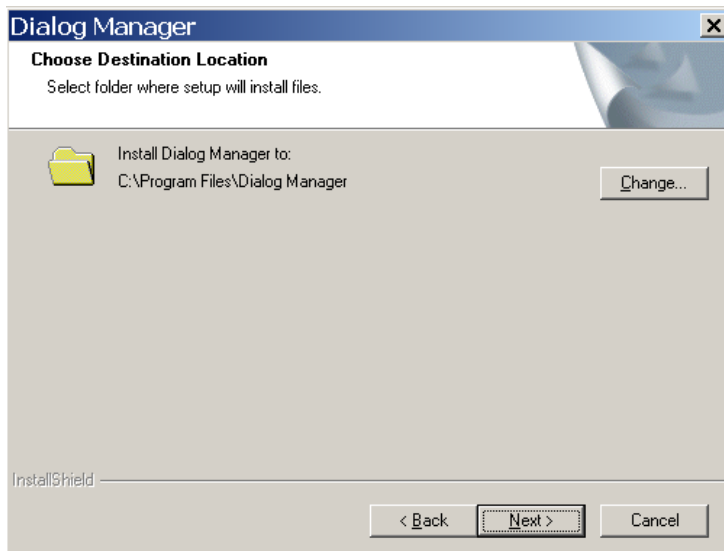


If the system does not launch installation automatically, you can run the installation program in path of **“My Computer > ZTEMODEM”**.

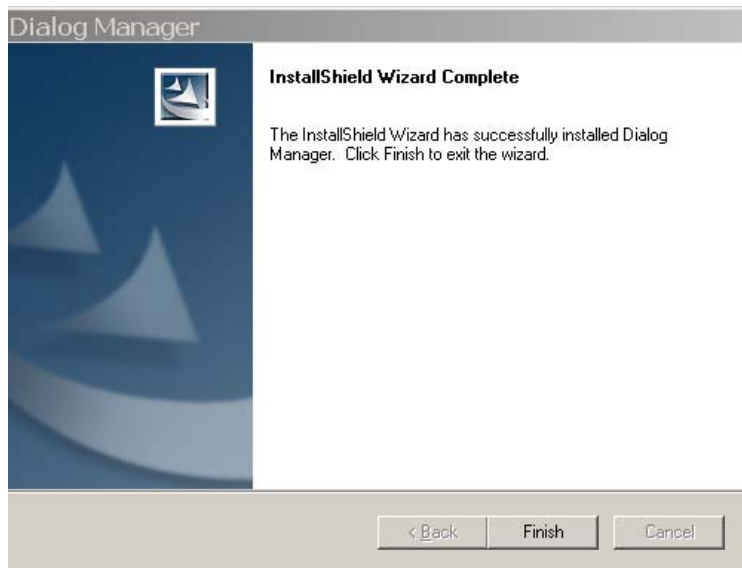
2. Click **“Next”** button to continue.



3. Select the folder that you want to install the software. You can select a different location by pressing **“Change”** button, then click **“Next”** button.



4. Wait until the setup procedure is completed, click **“Finish”** button to end the installation.

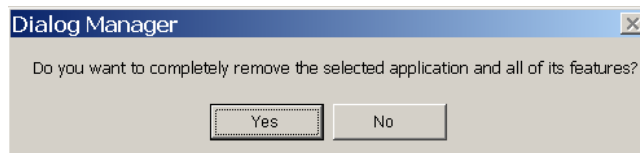


NOTE
Notes:

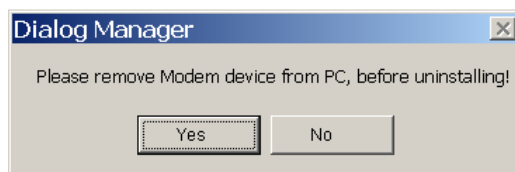
If you have problems with installation after the upper operation, please contact the shop or ZTE.

Uninstall

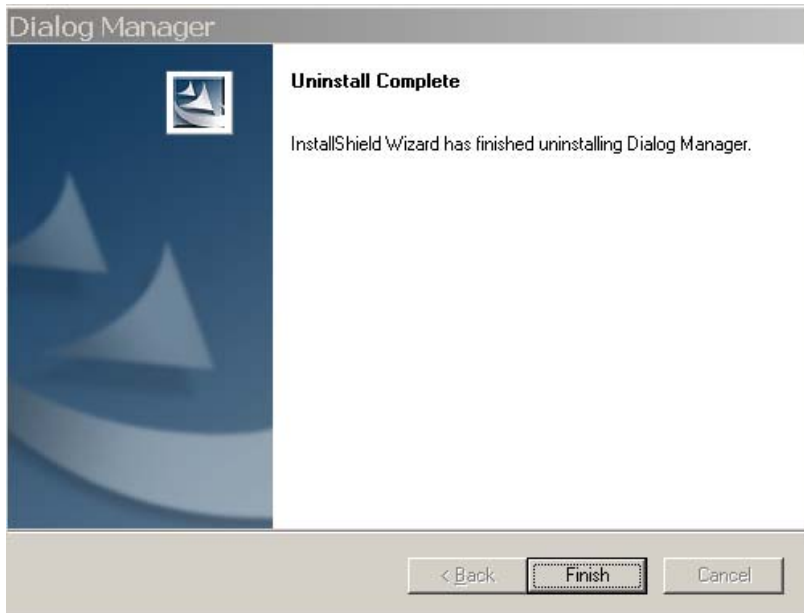
1. Close the application program before the software uninstalls. Click “**Start > Programs > Dialog Manager > Uninstall**” menu on your computer. Follow the system prompts to complete the software uninstall.
2. Click “**Yes**” button to confirm uninstall of the software.



3. Click “**Yes**” button according to the indication, then the system begins to uninstall programs.



4. Wait a minute and click “**Finish**” button to complete the application software uninstall.



For MAC OS

Installation

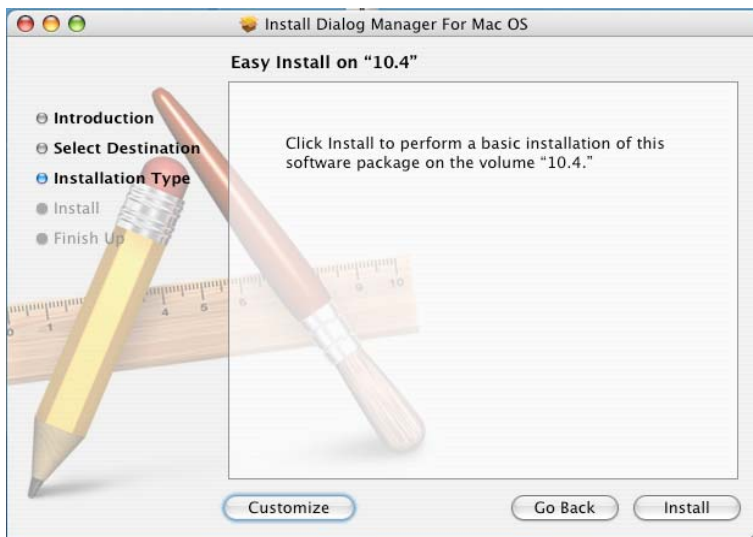
1. The system will automatically display a **ZTEMODEM** CD-ROM icon on the desktop, when you connect the modem to your computer correctly. Double click the "**Dialog Manager**" in the **ZTEMODEM**, and follow the system prompts to complete the software installation.
2. Click "**Continue**" button on the welcome page.



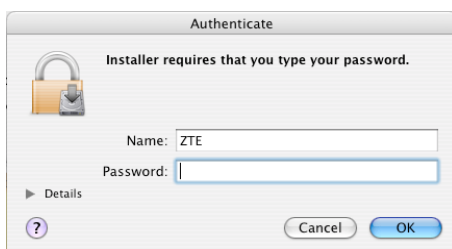
3. Select the folder that you want to install the software, and then click "**Continue**" button.



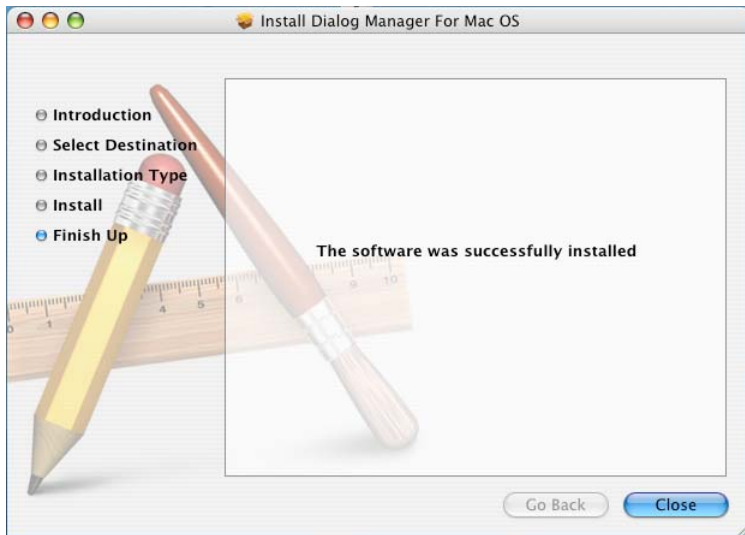
4. Select the installation type by pressing “**Customize**” button, and then click “**Install**” button.



5. Please enter user name and password to be authenticated, and click “**OK**” button to install.



6. Installation is in progress, after a while, click “**Close**” button to finish software installation.

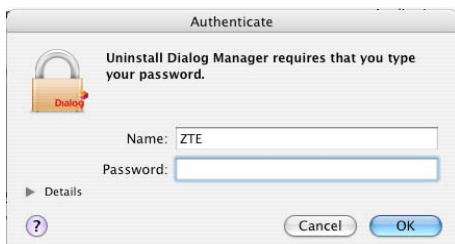


NOTE Notes:

If you have problems with installation after the upper operation, please contact the shop or ZTE.

Uninstall

1. Close the application program before the software uninstalls. Double click “**Finder > Applications > Uninstall Dialog Manager**” to uninstall the application software. Follow the system prompts to complete the software uninstall.
2. Please enter user name and password to be authenticated, and click “**OK**” button to install.



3. Click “**Uninstall**” button to confirm.



For Linux OS

The application has been tested on Linux 2.6.20 and newer. If you have an older version installed, we would recommend you update it before going on.

The software currently runs under Fedora [12.0/13.0/14.0](#), [Ubuntu 9.10/10.04/10.10](#).

Installation

Before installation, make sure that you have the needed dependencies installed (qt3, wvdial1.5.6 or newer), and you are in root privilege.

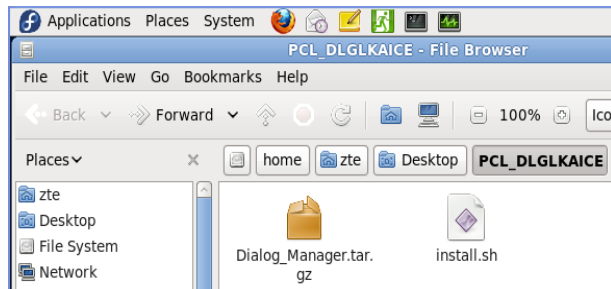
NOTE Notes:

If you can find the file “[/etc/wvdial.conf](#)” and “[/usr/lib/qt3](#)”, then you have installed wvdial and qt3.

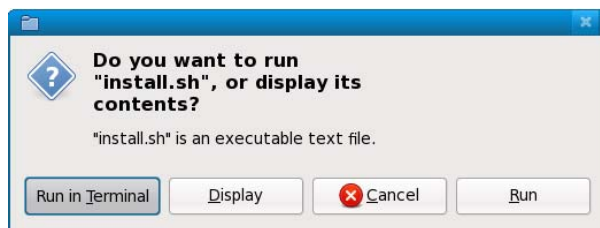
The steps of installation are as following:

1. The system will automatically display a **Dialog Manager** CD-ROM icon on the desktop, when you connect the modem to your computer correctly. The installation package is a *PCL_DLGLKAICE.tar.gz* in the Linux of the **Dialog Manager**.
2. Copy the installation packet "*PCL_DLGLKAICE.tar.gz*" to Desktop or other path.
3. Extract and get a folder, the folder include following files or folders:

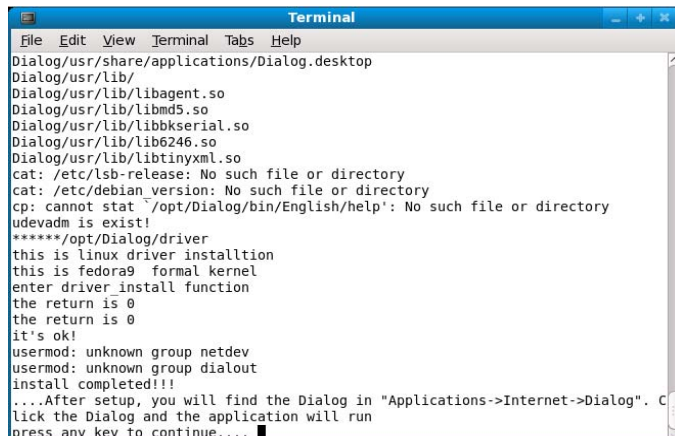
Dialog_Manager.tar.gz	This is a installation packet.
install.sh	This is a setup script.



4. Double click the installation software *install.sh*, and click “**Run in Terminal**” button to install.



5. When “**press any key to continue...**” shows up on the Terminal, press any key to finish the software installation.



NOTE
Notes:

System Requirements: Linux Kernel version 2.6.20 or higher.

If the modem is not detected or displaying as initializing for long time, please restart your computer. If it is not successful, try again.

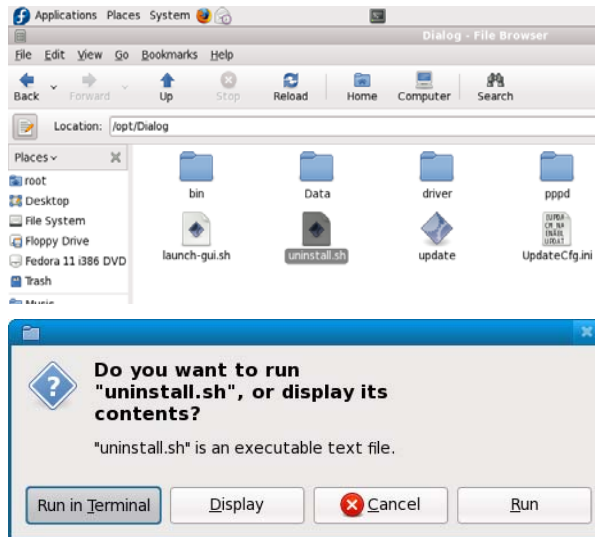
If the installation fails, please update the kernel. You can download the “**kernel source tree (supported versions 2.6.x)**” and “**compiler/binutils for kernel compilation**” and install them. If you have any problems with installation after the upper operation, please contact the shop or ZTE.

Uninstall

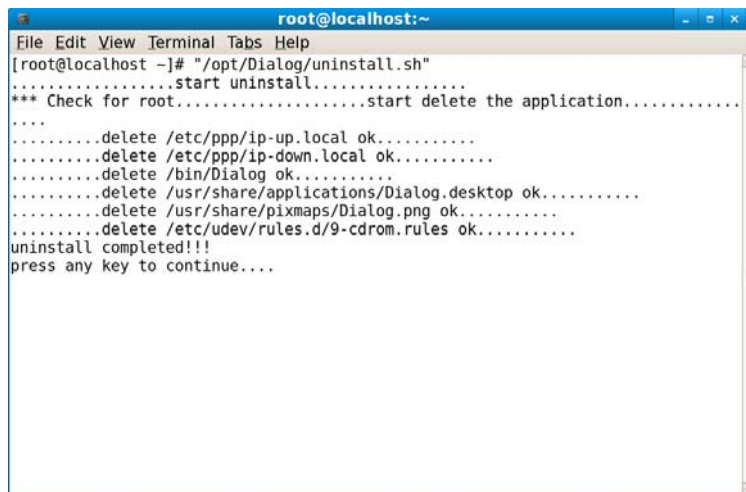
Close the application program before the software uninstalls. Make sure you are in root privilege.

The ways of uninstall are as following:

Double click *uninstall.sh* in the directory *"/opt/Dialog_Manager "*, and click **“Run in Terminal”** button to uninstall the software.



Or open a shell-terminal as root and run a shell-command *"/opt/Dialog_Manager/uninstall.sh"* in the shell-terminal.



How to Use Your Modem

Enable quick operation of the following functions:

Internet	Connect to the Internet.
Short Message	Send SMS and read SMS.
PhoneBook	Save and view the different information of the contact list.
Settings	Set normal relative information for the modem.
Statistics	Record the online time and flux.
Help	Show the help information.

Warning and Notice

To the owner

- Some electronic devices are susceptible to electromagnetic interference sent by modem if inadequately shielded, such as the electronic system of vehicles. Please consult the manufacturer of the device before using the modem if necessary.
- Operating of laptop and desktop PCs and the modem may interfere with medical devices like hearing aids and pacemakers. Please always keep them more than 20 centimeters away from such medical devices when they are turned on. Turn the modem off if necessary. Consult a physician or the manufacturer of the medical device before using the modem.
- Be aware of the usage limitation when using a modem at places such as oil warehouses or chemical factories, where there are explosive gases or explosive products being processed. Turn off your modem if required.
- The use of electronic transmitting devices is forbidden in aircrafts, at petrol stations and in hospitals. Please observe and obey all warning signs and switch off your modem in these conditions.
- Do not touch the inner antenna area if not necessary. Otherwise it will affect your modem's performance.
- Store the modem out of the reach of little children. The modem may cause injury if used as a toy.
- Do not touch the metallic parts of the modem so as to avoid a burn, when the modem is working.

Using your USB Modem

- Please use original accessories or accessories that are authorized. Using any unauthorized accessories may affect your modem's performance, and violate related national regulations about telecom terminals.
- Avoid using the modem near or inside metallic structures or establishments that can emit electromagnetic waves. Otherwise it may influence signal reception.
- The modem is not waterproof. Please keep it dry and store in a shady and cool place.
- Do not use the modem immediately after a sudden temperature change. In such case, it will produce dew inside and outside the modem, so don't use it until it becomes dry.
- Handle the modem carefully. Do not drop, bend or strike it. Otherwise the modem will be damaged.
- No dismantling by non-professionals and only qualified technicians can undertake repair work.
- Operating temperature range of $-10^{\circ}\text{C} \sim +60^{\circ}\text{C}$ and humidity range of 5% ~ 95% are recommended.

Limited Warranty

- This warranty does not apply to defects or errors in the Product caused by:
 - i. Reasonable abrasion.
 - ii. End User's failure to follow ZTE's installation, operation or maintenance instructions or procedures.
 - iii. End User's mishandling, misuse, negligence, or improper installation, disassembly, storage, servicing or operation of the Product.
 - iv. Modifications or repairs not made by ZTE or a ZTE-certified individual.
 - v. Power failures, surges, fire, flood, accidents, actions of third parties or other events outside ZTE's reasonable control.
 - vi. Usage of third-party products, or usage in conjunction with third-party products provided that such defects are due to the combined usage.
 - vii. Any other cause beyond the range of normal usage intended for the Product.

End User shall have no right to reject or return the Product, or receive a refund for the Product from

ZTE under the above-mentioned situations.

- This warranty is End User's sole remedy and ZTE's sole liability for defective or nonconforming items, and is in lieu of all other warranties, expressed, implied or statutory, including but not limited to the implied warranties of merchantability and fitness for a particular purpose, unless otherwise required under the mandatory provisions of the law.

Limitation of Liability

ZTE shall not be liable for any loss of profits or indirect, special, incidental or consequential damages resulting from or arising out of or in connection with using of this product, whether or not ZTE had been advised, knew or should have known of the possibility of such damages, including, but not limited to lost profits, interruption of business, cost of capital, cost of substitute facilities or product, or any downtime cost.

How to get help

You can get Help by:

- Clicking **Help** on the software.
- Sending E-mail to **mobile@zte.com.cn**
- Visiting **<http://www.zte.com.cn>**
- Calling Service Hotline: **+86-755-26779999**