

**MF680**

## USB Modem Quick Guide

**ZTE中兴**

### Quick Guide

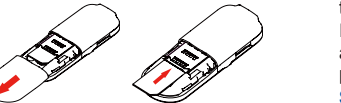
#### Introduction

The USB modem is a multi-mode 3G modem. With a USB interface connecting to your laptop or desktop computer, it supports data and SMS services through the mobile phone network, helping you realize mobile communication anytime and anywhere.

#### Hardware Installation

##### Installing the SIM/USIM Card

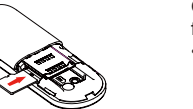
1. Remove the back cover on the modem.
2. Hold your SIM/USIM card with the cut corner oriented as shown and then slide it into the card holder with the metal contacts facing the modem.



3. Replace the back cover.

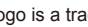
##### Installing the Memory Card

Only microSD card is supported by the modem and do not insert other types of memory cards into the modem.



The maximum capacity of the microSD card supported is 32 GB.

Insert the microSD card, orientated as shown, into the microSD card slot until you hear a click.

**Notes:** The  logo is a trademark of the SD Card Association.

#### Connecting to Your Computer

Plug the retractable USB of the modem to the USB port of your computer. Make sure that it is tightly inserted.

If your PC runs a Windows operating system, it will automatically detect and recognize the modem and display a new icon in the taskbar, indicating that the PC and the modem have been connected properly.

#### Software Installation

On different operating systems, the software installation procedures may be different. Please follow the general guide below and the system prompts during installation.

- For Windows XP, Vista and Windows 7

When you connect the modem to your PC correctly, the system automatically recognizes the modem as a new CD-ROM drive and launch the software installation wizard. If the system does






not launch the installation wizard automatically, please start it by running the executable file in the new CD-ROM directory.

- For Mac OS

The system will automatically display a new CD-ROM icon on the desktop, when you connect the modem to your Mac correctly. Double click the installation software package in the CD-ROM, and follow the system prompts to complete the software installation.

#### Functions

Open the installed software and click the following buttons to access each function.

	Connect	Connect to the Internet.
	SMS	Send and receive text messages.
	Phonebook	Manage contacts information.
	Settings	Configure the USB modem settings.
	Data record	Show connection information.

#### LED Light

The LED lights up when the modem is connected to the PC.

Color	Modem Status
Red	Power on, but not registered to a network
Blue solid	Registered to a 3G network
Blue blinking	Active data transfer on the 3G network
Green solid	Registered to a 2G network
Green blinking	Active data transfer on the 2G network

#### Warning and notice

##### To the owner

- Some electronic devices are susceptible to electromagnetic interference sent by modem if inadequately shielded, such as the electronic system of vehicles. Please consult the manufacturer of the device before using the modem if necessary.

**ZTE中兴****ZTE CORPORATION**

NO. 55, Hi-tech Road South, Shenzhen, P.R.China

Postcode: 518057 <http://www.zte.com.cn> [mobile@zte.com.cn](mailto:mobile@zte.com.cn)

Service Hotline: +86-755-26779999

The information on the package is only for your reference. Images are for your reference only.

Please check the product model before purchasing.

ZTE reserves the rights to change specifications and parameters of the products without further notice.

07958450XXXX

- Operating of laptop and desktop PCs and the modem may interfere with medical devices like hearing aids and pacemakers. Please always keep them more than 20 centimeters away from such medical devices when they are turned on. Turn the modem off if necessary. Consult a physician or the manufacturer of the medical device before using the modem.
- Be aware of the usage limitation when using a modem at places such as oil warehouses or chemical factories, where there are explosive gases or explosive products being processed. Turn off your modem if required.
- The use of electronic transmitting devices is forbidden in aircrafts, at petrol stations and in hospitals. Please observe and obey all warning signs and switch off your modem in these conditions.
- Do not touch the inner antenna area if not necessary. Otherwise it will affect your modem's performance.
- Store the modem out of the reach of little children. The modem may cause injury if used as a toy.
- Do not touch the metallic parts of the modem so as to avoid a burn, when the modem is working.

**Using your USB Modem**

- Please use original accessories or accessories that are authorized. Using any unauthorized accessories may affect your modem's performance, and violate related national regulations about telecom terminals.
- Avoid using the modem near or inside metallic structures or establishments that can emit electromagnetic waves. Otherwise it may influence signal reception.
- The modem is not waterproof. Please keep it dry and store in a shady and cool place.
- Do not use the modem immediately after a sudden temperature change. In such case, it will produce dew inside and outside the modem, so don't use it until it becomes dry.
- Handle the modem carefully. Do not drop, bend or strike it. Otherwise the modem will be damaged.
- No dismantling by non-professionals and only qualified technicians can undertake repair work.
- Operating temperature range of -10°C ~ +60°C and humidity range of 5% ~ 95% are recommended.

**Limited Warranty**

- This warranty does not apply to defects or errors in the Product caused by:
  - i. Reasonable abrasion.

- ii. End User's failure to follow ZTE's installation, operation or maintenance instructions or procedures.
  - iii. End User's mishandling, misuse, negligence, or improper installation, disassembly, storage, servicing or operation of the Product.
  - iv. Modifications or repairs not made by ZTE or a ZTE-certified individual.
  - v. Power failures, surges, fire, flood, accidents, actions of third parties or other events outside ZTE's reasonable control.
  - vi. Usage of third-party products, or usage in conjunction with third-party products provided that such defects are due to the combined usage.
  - vii. Any other cause beyond the range of normal usage intended for the Product.
- End User shall have no right to reject or return the Product, or receive a refund for the Product from ZTE under the above-mentioned situations.
- This warranty is End User's sole remedy and ZTE's sole liability for defective or nonconforming items, and is in lieu of all other warranties, expressed, implied or statutory, including but not limited to the implied warranties of merchantability and fitness for a particular purpose, unless otherwise required under the mandatory provisions of the law.

**Limitation of Liability**

ZTE shall not be liable for any loss of profits or indirect, special, incidental or consequential damages resulting from or arising out of or in connection with using of this product, whether or not ZTE had been advised, knew or should have known of the possibility of such damages, including, but not limited to lost profits, interruption of business, cost of capital, cost of substitute facilities or product, or any downtime cost.

Copyright © 2011 ZTE CORPORATION.

All rights reserved.

No part of this publication may be excerpted, reproduced, translated or utilized in any form or by any means, electronic or mechanical, including photocopying and microfilm, without the prior written permission of ZTE Corporation.

The manual is published by ZTE Corporation. We reserve the right to make modifications on print errors or update specifications without prior notice.

**C € 1588**