

MAXIS BROADBAND MODEM (Model MF190)

Key Features:

- Absolute mobility across HSPA/3G/EDGE/GPRS networks
- 7.2 Mbps download and 5.76 Mbps upload capabilities
- Multi-functional USB drive with Micro SD Card slot
- USB 2.0 for simple plug and play

Powered by: **ZTE中兴**

System Requirements:

- Standard USB interface
- Windows XP, Windows Vista, Windows 7
- Mac 10.4, 10.5, 10.6
- Hardware system should meet or exceed the recommended requirements for the installed OS version
- Display resolution: 800x600 or above

- 24/7 Customer Service
- 1800 82 2000
- 1800 82 1919 (for corporate customers)
- mylaunchpad.com.my (for self help tips)



MAXIS BROADBAND MODEM

The multi-functional USB drive

Make sure your computer meets the requirements, or you might experience a dip in performance from the Modem. For Windows XP, it is recommended that you install patches Service Pack 2 and above. This Modem works exclusively with the Maxis Broadband service.

MF190 Quick Start Guide
Size: 200mm x 60mm H



INTRODUCTION

The ZTE USB modem is a multi-mode USB modem, working in HSUPA/HSDPA/WCDMA/EDGE/GPRS/GSM networks. With USB interface connecting to a laptop or a desktop PC, it integrates the functionality of a modem and a mobile phone (SMS), and combines mobile communication with Internet perfectly. It supports data and SMS services through the mobile phone network, enabling you to communicate anytime and anywhere.

SPECIFICATION

The following table shows the specification of your device.

Interface Type	USB 2.0 HIGH SPEED
Systems supported	Supports most types of laptop and desktop PC.
Operating systems supported	Windows XP, Windows Vista, Windows 7, MAC 10.4, 10.5, 10.6
Functions	SMS service, Data service, Applications management, support microSD card, etc.

1



SAFE REMOVAL FROM YOUR SYSTEM

Please close the application software, and then you can pull out the USB Modem safely.

HOW TO USE YOUR MODEM

Various icons are presented to enable quick operation of the following functions:

	Connect	Connect to the Internet.
	Statistic	Show the connection information.
	SMS	Send and receive text messages.
	Phonebook	Manage contacts information.
	Settings	Configure the modem settings.
	Others	Show the other functions.

6

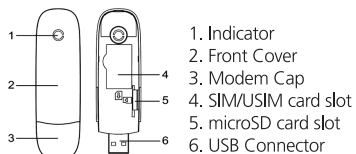


Network Standards	HSUPA/HSDPA/WCDMA/EDGE/GPRS/GSM
Transmission speed (Max)	HSUPA: 5.76Mbps UL HSDPA: 7.2Mbps DL
Temperature	Storage: -40°C ~ +80°C Operation: -10°C ~ +60°C
Dimension	76mm x 26mm x 11mm (without cap)
microSD capability	Support up to 32GB microSD card

NOTES: microSD is a trademark of SD Card Association

Getting to know your device

The following figure shows the appearance of the MF190. It is only for your reference. The actual product may be different.



2



	Help	Show the help information.
	MyLaunchpad	Visit http://mylaunchpad.com.my/
	Broadband Wizard	Install & run the Broadband Wizard software.
	Internet Connection	Show the Internet Connection page.

7

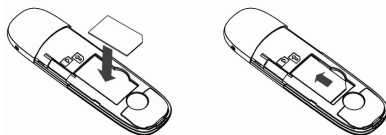


HARDWARE INSTALLATION

- Put finger on the bottom finger grip, and then lift the front cover of the modem to release and remove.

NOTES: Do not open the front cover rudely so as to avoid the damage of the front cover.

- Insert the SIM/USIM card into the SIM/USIM card slot. Insert the SIM/USIM card with the metal contact area facing downwards into the slot, and then push SIM/USIM card as far as possible, shown as the following picture.



3



- Be aware of the usage limitation when using a modem at places such as oil warehouses or chemical factories, where there are explosive gases or explosive products being processed. Turn off your modem if required.
- The use of electronic transmitting devices is forbidden in aircrafts, at petrol stations and in hospitals. Please observe and obey all warning signs and switch off your modem in these conditions.
- Do not touch the inner antenna area if not necessary. Otherwise it will affect your modem's performance.
- Store the modem out of the reach of little children. The modem may cause injury if used as a toy.
- Do not touch the metallic parts of the modem so as to avoid a burn, when the modem is working.

Using your USB Modem

- Please use original accessories or accessories that are authorized. Using any unauthorized accessories may affect your modem's performance, and violate related national regulations about telecom terminals.
- Avoid using the modem near or inside metallic structures or establishments that can emit electromagnetic waves. Otherwise it may influence signal reception.
- The modem is not waterproof. Please keep it dry and store in a shady and cool place.
- Do not use the modem immediately after a sudden temperature change. In such case, it will produce dew inside and outside the modem, so don't use it until it becomes dry.

8

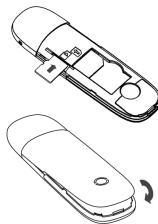


- Insert the microSD card into the microSD card slot.

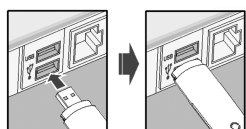
NOTES: This modem only supports microSD card.

Insert your microSD card into the microSD card slot, shown as the following picture.

- Put the front cover of the modem flatly upon the body of modem. Direct the front cover towards the locking catches on the sides of the modem and push the front cover of the modem to lock the front cover into its place.



- Connect the Modem to your laptop or desktop PC.
 - Plug the USB connector into your computer's USB port and make sure that it is tightly inserted.
 - The OS automatically detects and recognizes new hardware and starts the installation wizard.



4



- Handle the modem carefully. Do not drop, bend or strike it. Otherwise the modem will be damaged.
- No dismantling by non-professionals and only qualified technicians can undertake repair work.
- Operating temperature range of -10°C ~ +60°C and humidity range of 5% ~ 95% are recommended.

Limited Warranty

- This warranty does not apply to defects or errors in the Product caused by:
 - Reasonable abrasion.
 - End User's failure to follow ZTE's installation, operation or maintenance instructions or procedures.
 - End User's mishandling, misuse, negligence, or improper installation, disassembly, storage, servicing or operation of the Product.
 - Modifications or repairs not made by ZTE or a ZTE-certified individual.
 - Power failures, surges, fire, flood, accidents, actions of third parties or other events outside ZTE's reasonable control.
 - Usage of third-party products, or usage in conjunction with third-party products provided that such defects are due to the combined usage.
 - Any other cause beyond the range of normal usage intended for the Product.
- End User shall have no right to reject or return the Product, or receive a refund for the Product from ZTE under the abovementioned situations.

9



SOFTWARE INSTALLATION GUIDE

On different operating systems, the installation procedures may be difference. Follow the system prompts during operation.

FOR WINDOWS OS

Your system will start the software setup process automatically when you connect the modem to your computer correctly. Follow the system prompts to complete the software installation.

NOTES: If the system does not launch installation automatically, you can run the installation program in path of My Computer > ZTEMODEM.

FOR MAC OS

The system will automatically display a ZTEMODEM CD-ROM icon on the desktop, when you connect the modem to your computer correctly. Double click the installation software package in the ZTEMODEM, and follow the system prompts to complete the software installation.

5



- This warranty is End User's sole remedy and ZTE's sole liability for defective or nonconforming items, and is in lieu of all other warranties, expressed, implied or statutory, including but not limited to the implied warranties of merchantability and fitness for a particular purpose, unless otherwise required under the mandatory provisions of the law.

Limitation of Liability

ZTE shall not be liable for any loss of profits or indirect, special, incidental or consequential damages resulting from or arising out of or in connection with using of this product, whether or not ZTE had been advised, knew or should have known of the possibility of such damages, including, but not limited to lost profits, interruption of business, cost of capital, cost of substitute facilities or product, or any downtime cost.

HOW TO GET HELP

- You can get Help by:
- Clicking Help on the software.
 - Sending E-mail to mobile@zte.com.cn
 - Visiting <http://www.zte.com.cn>
 - Calling Service Hotline: +86-755-26779999

€ 1588

10