

ZTE



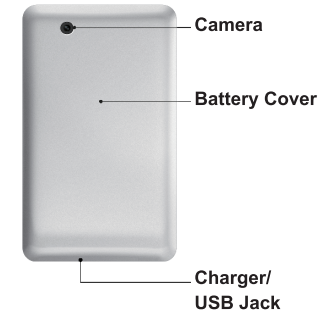
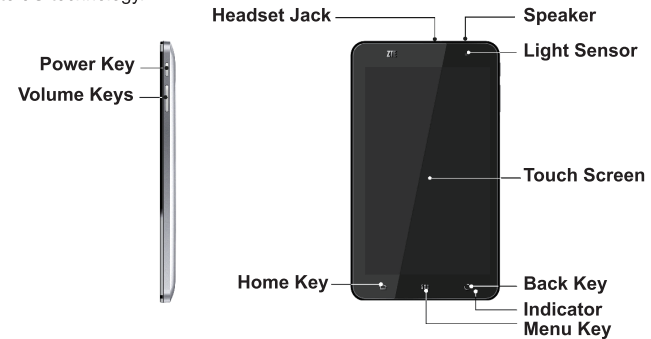
Light, make it possible

Quick Start Guide

Overview

Light Tablet supports WCDMA2100/1900/900、GSM900/1800/1900 band mode and GPRS Class, and it can switch between different networks.

Light has powerful performance and abundant functions. It can let you share your life with others instantly by high-speed wide connection, which is carried out by up to date 3G technology.



ZTE

ZTE CORPORATION

NO. 55, Hi-tech Road South, ShenZhen, P.R.China

Postcode: 518057

http://www.zte.com.cn mobile@zte.com.cn

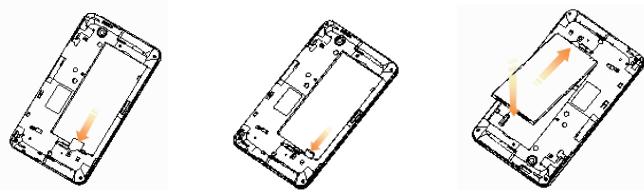
Service Hotline: +86-755-26779999

The information on the package is only for your reference. Images are for your reference only. Please check the product model before purchasing. ZTE reserves the rights to change specifications and parameters of the products without further notice.

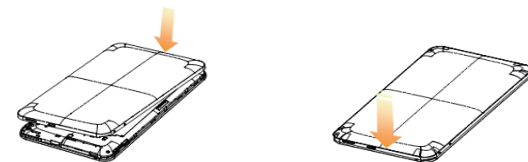
Before Getting Started

Before using Light, you need insert the SIM card and battery. And if you want to use some functions such as camera, album and so on, you must insert a microSD card beforehand.

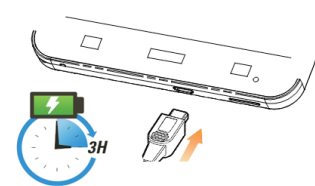
1. insert SIM card
2. insert microSD card
3. Insert battery



4. Cover on



5. Charge up



Notes:

microSD logo is a trade mark of SD Card Association.

Powering On & Off

1. To power on your Tablet, hold **Power Key**.
2. If there is a register, please input your PIN code.
3. To power off your phone, hold **Power Key** to get the phone options, select **Power off**, and then tap **OK**.

Notes:

PIN(Personal Identification Number) is a password supplied by your network provider. If the PIN code is On, you can not use the SIM card without PIN. The mobile device will search the appointed network service provider automatically after it approbate the input PIN. This course may cost several seconds.

Switching your phone to sleep mode

Sleep Mode suspends your device to a low-power-consumption state while the display is off to save battery power. Sleep Mode can prevent unintentional operations on touch screen and keypad. Your device goes into Sleep Mode automatically when you leave it idle after a certain period of time. You can also active Sleep Mode by the method as below:

Press **Power Key**.

Waking up your phone from sleep mode

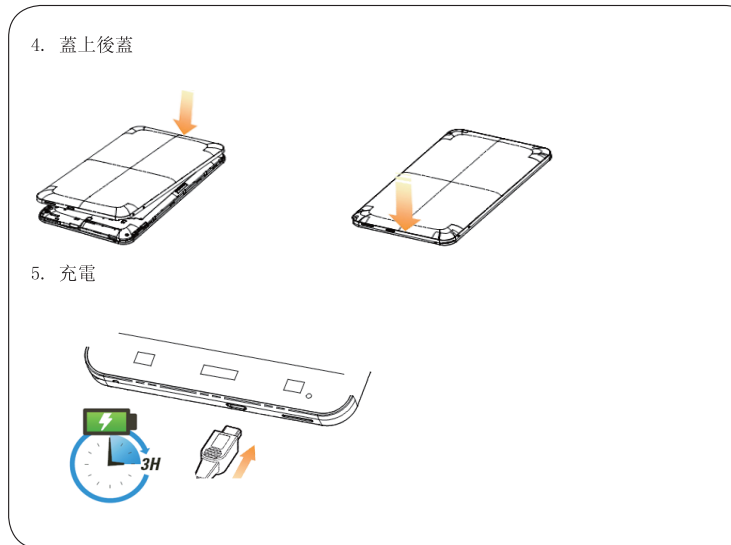
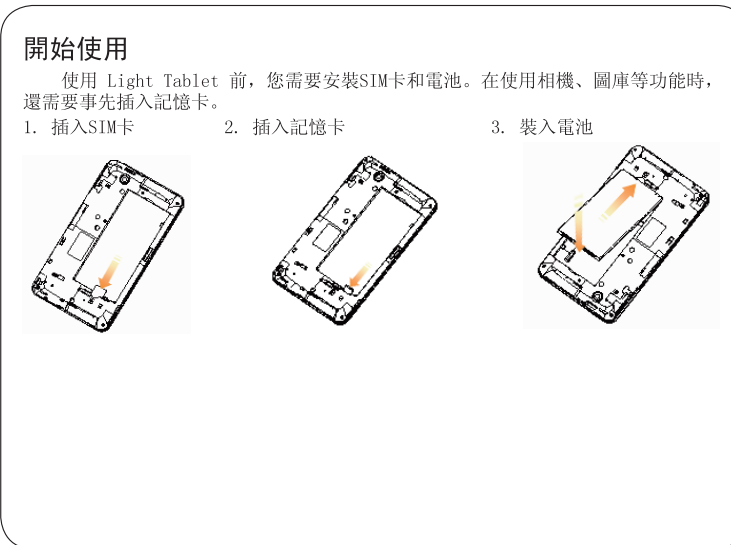
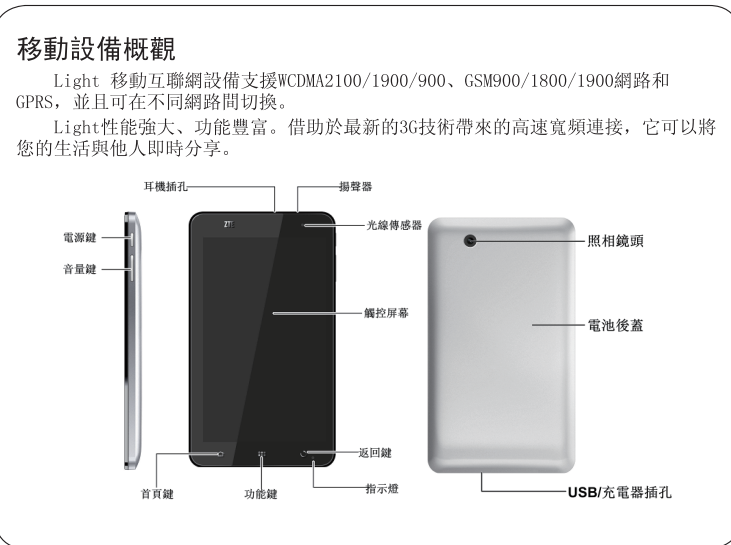
The display will be off and lock when the mobile device is Sleep Mode. If you want to use the mobile device, you need wake it up and unlock the touch screen:

1. Press **Power Key** to activate your screen display.
2. Touch the blue unlock icon on the left bottom and drag it to the right.

Product Safety Information

	Read the Safety Information section of this user guide on this page		Do not use while re-fuelling
	Do not use hand-held while driving		This device may produce a bright or flashing light
	Small parts may cause a choking hazard		Do not dispose of it in a fire

	This device may produce a loud sound		Avoid contact with magnetic media
	Keep away from pacemakers and other personal medical devices		Avoid Extreme Temperatures
	Switch off when instructed in hospitals and medical facilities		Avoid any contact with liquid, keep it dry
	Switch off when instructed in aircrafts and airports		Do not attempt to disassemble
	Switch off in explosive environments		Do not rely on this device for emergency communications
	Only use approved accessories		



提示：
microSD 為 SD Card Association 的商標。

開/關機

1. 要開機的話，長按**電源鍵**直到螢幕顯示開機畫面。
2. 如有提示要求，請輸入您的PIN碼。
3. 要關機的話，長按**電源鍵**選擇關機。

提示：
PIN（個人識別碼）是由您的系統商提供的密碼。如果PIN碼開啟，您需要這個密碼才能使用SIM卡。移動設備接受輸入的PIN碼後，便會自動搜尋指定的網路。搜尋的過程可能需要幾秒鐘。

切換為睡眠模式

睡眠模式是一種省電模式，此時移動設備螢幕會關閉，可以防止螢幕或按鍵的錯誤操作。如果您將移動設備閒置一定的時間，它將自動切換為睡眠模式。您還可以透過以下方法啟動睡眠模式：
按下**電源鍵**。

喚醒您的移動設備

移動設備在切換至睡眠模式後，螢幕會關閉並且會被鎖定。此時如果您需要使用移動設備，請喚醒移動設備並對螢幕進行解鎖操作：

1. 按**電源鍵**，此時您的移動設備螢幕已被啟動。
2. 點擊螢幕左下方的藍色塊，將其向右拖動解鎖螢幕。

產品安全須知

	請閱讀本用戶手冊中這一頁的安全資訊部分		請不要在加燃料時使用手機
	駕車時請不要使用手持設備		這個設備可能產生明亮的或者閃亮的光
	小的零件有可能導致窒息的危險		請不要將手機投入火中

	這個設備可能會產生大的響聲		請避免將手機靠近有磁性的物體
	請將手機遠離心臟起搏器和其他個人以用設備		請避免手機處於過高的溫度環境中
	在醫院或者醫療設備旁，請關閉手機		請避免手機接觸任何液體，保持手機乾燥
	在飛機上請關閉手機		請不要嘗試拆開手機
	在極易爆炸的環境區域，請關閉手機		在緊急通訊時，請不要依賴這個設備

	請只使用被認可的附件		
--	------------	--	--