

LEGAL INFORMATION

Security

- To protect your mobile phone from illegal use, take the security measures as follows:
 - Set PIN codes of the SIM card.
 - Set handset lock code.
 - Set call restrictions.

Safety Precautions

This section includes some important information on safe and efficient operation. Please read this information before using the phone.

Operational Precautions

- Please use your phone properly. When making or receiving a call, please hold your phone as holding a wireline telephone. Make sure that the phone is at least one inch (about two point five centimeters) from your body when transmitting.
- Do not touch the antenna when the phone is in use. Touching the antenna area affects call quality and may cause the phone to operate at a higher power level than needed.
- Some people may be susceptible to epileptic seizures or blackouts when exposed to flashing lights, such as when watching television or playing video games. If you have experienced seizures or blackouts, or if you have a family history of such occurrences, please consult your doctor before playing video games on your phone or enabling a flashing-light feature on your phone. (The flashing-light feature is not available on all products.)
- Keep the phone out of the reach of small children. The phone may cause injury if used as a toy.

- Turn off your phone before you clean it. Use a damp or anti-static cloth to clean the phone. Do not use a dry cloth or electrostatically charged cloth. Do not use chemical or abrasive cleaners as these could damage the phone.
- As your mobile phone can produce electromagnetic field, do not place it near magnetic items such as computer disks.
- Using the phone near electrical appliances such as TV, telephone, radio and personal computer can cause interference.
- Do not expose your mobile phone to direct sunlight or store it in hot areas. High temperatures can shorten the life of electronic devices.
- Keep your phone dry. Any liquid may damage your phone.
- Do not drop, knock or harshly treat the phone. Rough handling can break internal circuit boards.
- Do not connect the phone with any incompatible enhancement.
- Do not attempt to disassemble the mobile phone or battery.
- Do not store the phone with flammable or explosive articles.
- Do not charge the mobile phone without battery.

Precautions for Potentially Explosive Atmospheres

- Switch off your phone prior to entering any area with potentially explosive atmospheres, such as fueling areas, fuel or chemical transfer or storage facilities.
- Do not remove, install, or charge batteries in such areas. Spark in a potentially explosive atmosphere can cause an explosion or fire resulting in bodily injury or even death.
- To avoid possible interference with blasting operations, switch off your phone when you are near electrical blasting caps, in a blasting area, or in areas posted "Turn off electronic devices." Obey all signs and instructions.

- Do not disassemble or refill the battery. Otherwise, it will cause liquid leakage, overheating, explosion and ignition of the battery.
- Please store the battery in a cool dry place if you don't use it for a long period.
- The battery can be recharged for hundreds of times, but it will eventually wear out. When the operating time (talk time and standby time) is noticeably shorter than normal, it is time to replace it with a new one.
- Please stop using the charger and battery when they are damaged or show evidence of aging.
- Return the worn-out battery to the provider or dispose of it in accordance with environment regulations. Do not dispose of it in household rubbish.
- Please use original batteries or batteries approved by the phone manufacturer. Using any unauthorized battery may affect your handset performance or may cause danger of explosion, etc.

Warning: If the battery is damaged, do not discharge it. If the leakage does come into contact with the eyes or skin, wash thoroughly in clean water and consult a doctor.

Limitation of Liability

ZTE shall not be liable for any loss of profits or indirect, special, incidental or consequential damages resulting from or arising out of or in connection with using this product, whether or not ZTE had been advised, knew or should have known the possibility of such damages. The user should refer to the enclosed warranty card for full warranty and service information.

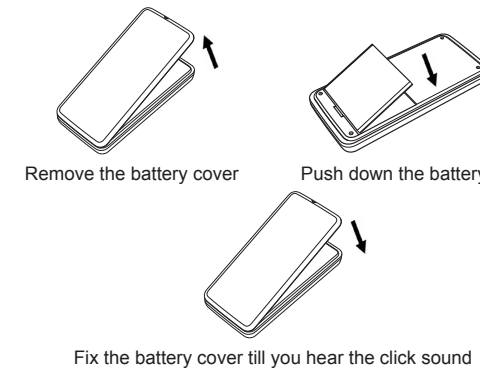
Note: The pictures and icons shown in the manual are just schematic drawings for function demonstration. If they are inconsistent with your handset, please take your handset as the standard. If the inconsistency exists in the manual because of the handset function updating, please refer to the follow-up public information from ZTE CORPORATION.

Function	Description
Left soft key	Performs the function indicated at the left bottom of the screen.
Right soft key	Performs the function indicated at the right bottom of the screen.
Center key	Press to confirm actions and make selections.
4-Way Navigation keys	These keys (UP, DOWN, LEFT and RIGHT) allow for navigation through menu options and quick accessing to some function menus.
Send key	Press to dial a phone number or answer a call, or view the call history in the standby mode.
End/Power key	Press to exit to the standby mode. Hold to switch on/off the phone.
* key and # key	They have different functions in different modes or function menus.
Alpha numeric keys	Press to enter characters 0-9 and the alphabets from a-z.

Note: In this User Manual, "press a key" means to press the key and release it immediately, while "hold a key" means to press the key for at least two seconds and then release it.

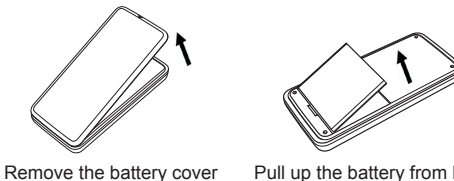
Locking and Unlocking the Keypad

In the standby mode, press the **Left soft key** and then press the *** key** within two seconds to lock the keypad. The unlock method is the same. Locking the keypad can prevent unintentional operations on it. You can answer an incoming call with the regular operation when the keypad is locked.



Removing the battery

- Make sure that your mobile phone is switched off.
- Remove the battery cover.
- Pull the battery up and remove it from the mobile phone.



Precautions While Driving

- Please pay attention to the traffic safety. Check the laws and regulations on the use of your phone in the area where you drive. Always obey them.
- Use hands-free function of the phone, if available.
- Pull off the road and park before making or answering a call if conditions require.

Precautions for Medical Devices and Facilities

- When using your phone near pacemakers, please always keep the phone more than eight inches (about twenty centimeters) from the pacemaker when the phone is switched on. Do not carry the phone in the breast pocket. Use the ear opposite the pacemaker to minimize the potential for interference. Switch off the phone immediately if necessary.
- Some phones may interfere with some hearing aids. In the event of such interference, you may consult your hearing aids manufacturer to discuss alternatives.
- If you use any other personal medical device, please consult the manufacturer of your device to determine if it is adequately shielded from RF (radio frequency) energy.
- In those facilities with special demand, such as hospital or health care facilities, please pay attention to the restriction on the use of mobile phone. Switch off your phone if required.

Mobile Phone

- Please use original accessories or accessories approved by the phone manufacturer. Using any unauthorized accessories may affect your mobile phone's performance, damage your phone or even cause danger to your body and violate related local regulations about telecom terminals.

Precautions for Electronic Devices

- Some electronic devices are susceptible to electromagnetic interference sent by mobile phone if inadequately shielded, such as electronic system of vehicles. Please consult the manufacturer of the device before using the phone if necessary.

Safety and General Use in Vehicles

- Safety airbag, brake, speed control system and oil eject system shouldn't be affected by wireless transmission. If you do meet problems above, please contact your automobile provider. Do not place your phone in the area over an airbag or in the airbag deployment area. Airbags inflate with great force. If a phone is placed in the airbag deployment area and the airbag inflates, the phone may be propelled with great force and cause serious injury to occupants of the vehicle.
- Please turn off your mobile phone at a refueling point, and the same to the place where the use of two-way radio is prohibited.

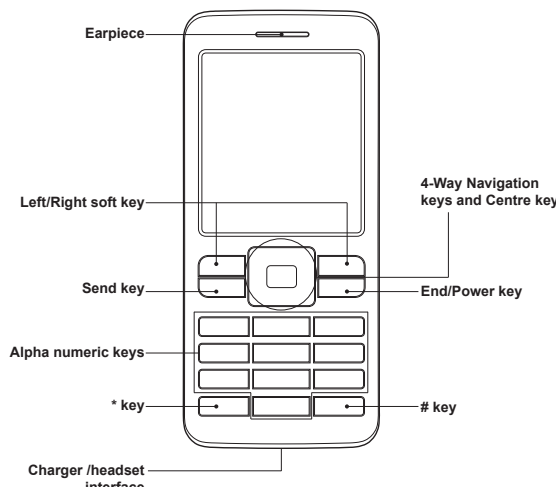
Aircraft Safety

- Please turn off your mobile phone before the airplane takes off. In order to protect airplane's communication system from interference, it is forbidden to use mobile phone in flight. Safety regulations require you to have permission from a crew member to use your phone while the plane is on the ground.
- If the mobile phone has the function of automatic timing power-on, please check your alarm setting to make sure that your phone will not be automatically turned on during flight.

Battery Use

- Do not short-circuit the battery, as this can cause the unit to overheat or ignite.
- Do not store battery in hot areas or throw it into fire. Otherwise, it will cause explosion.

Key Functions



Interface Icons

	Signal strength		New SMS, message full when blinking
	Keypad locked		GPRS
	Silent		Call diverting
	Battery status		General
	Alarm clock set		Headset
	Outdoor		Meeting
	Missed call		New MMS

Battery

The lithium ion battery of the mobile phone can be immediately used after unpacking.

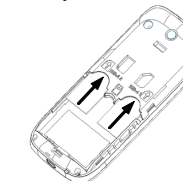
Installing the battery

- Pull the battery cover from the notch on the top edge and remove the cover.
- Insert the battery by aligning the gold-coloured contacts with the contacts in the battery slot.
- Push down the upper section of the battery until it clicks into place.
- Fix the battery cover till you hear the click sound.

Inserting the SIM Card

Insert the SIM card as follows:

- Make sure that the phone is switched off and the charger is disconnected from the phone.
- Turn the phone over and remove the battery cover.
- Remove the battery if it is already installed.
- Hold your SIM card with the cut corner oriented as shown and then slide it into the card holder with the gold-coloured contacts facing downward.
- Install your battery.
- Fix the battery cover till you hear the click sound.



Insert the SIM card

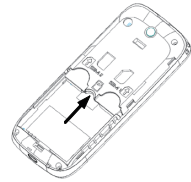
SIM (Subscriber Identity Module) card is a micro chip from a network provider that keeps the carrier details and customers information such as names and phone numbers. Your phone won't work without it. If you already have contacts on your SIM card, they can be transferred in most cases.

Inserting the Memory Card

You can use a memory card to expand the storage of the phone. You can store or copy files such as photos, music, and so on. Do not take out the card or switch off the phone while transmitting or storing data, which may cause data loss or damage to the phone or the card.

Insert the memory card as follows:

- The memory card slot is in the middle of the SIM card holders. Open the battery cover and remove the battery. Insert the card with the metal contacts facing down until it clicks to the right position.



Insert the Memory card

Charging the Battery

Your phone is powered by a rechargeable battery. For maximum battery performance, it is recommended that you first use up the battery power and then charge it completely. A new battery's full performance is achieved only after three complete charge and discharge cycles.

1. Connect your travel adapter to the bottom of your mobile phone as shown in the diagram.
2. Connect the other end of the travel adapter to the mains socket.
3. When you charge the battery, the battery charging indicator appears.

- 11 -

Writing Text

- Change input mode: Press the **# key** to change the input mode (input modes: Abc, abc, ABC and 123).
- Input letters: In Abc/abc/ABC mode, constantly press the corresponding letter key till the letter appears.
- Input digits: In 123 mode, press digit key once to input a digit. In Abc/abc/ABC mode, constantly press the digit key until the number appears.
- Input symbol: Press the *** key** to enter symbol mode, select the required symbol (common symbols) by pressing the **Navigation keys** and then press the **Left soft key** or **Center key** to confirm it. In Abc/abc/ABC mode, constantly press the **1 key** until the required symbol (common symbols) appears.
- Input space: Press the **0 key** to input space. It does not work in 123 mode.
- Delete character: Press the **Right soft key** to clear a character. Hold the **Right soft key** to delete all characters and clear the display.
- Move cursor to left or right: Among the text, press the **Left/Right navigation keys** to move the cursor to left or right.

How to Add People to the Phonebook

There are some numbers that you may want to call again and again, so it makes sense to add these numbers to your Phonebook. You can then access these numbers quickly and easily.

- Go to **Menu→Phonebook→Options→Add new contact**.
- Select to save the number to SIM or phone.
- Edit the information and save it.
- You can also save a number right after you've made or received a phone call or a message from someone who is not yet in your Phonebook list.

- 13 -

How to Receive a Message

Upon receiving a message, the mobile phone will alert you with a ringtone, prompt, or a new message icon.

1. Press **Read** to open the new message. You can also go to Inboc to read the message.
2. Use the **Up/Down Navigation keys** to view the message.
3. While the message is open, use **Options** to reply, delete, or forward the message. You can also call back the sender or save the sender's number.

You can also receive broadcast messages by using this mobile phone. Go to **Menu→Messages→Voicemail server**, you can call the voicemail or edit the voicemail name and number.

How to Set User profiles

Go to **Menu→User profiles**. You can select **Options→Activate** to activate a profile. Or you can select **Options→Customize** to edit a profile.

Note: The Silent mode can be only selected **On** or **Off**. And the Headset mode can only be activated with the headset connected.

How to View Call history

Go to **Menu→Call center→Call history**.

Dialed calls, received calls and missed calls are saved in **Call history**. If the records are full, the earliest saved records will be deleted automatically.

Also, you can view call timers, call cost, SMS counter, and GPRS counter in **Call history**.

How to Configure Call settings

Go to **Menu→Call center→Call settings**.

You can set call waiting, call divert and call barring.

In **Advanced settings**, you can set blacklist, auto redial, call time display, call time reminder, auto quick end.

- 15 -

Alarm

You can view, and edit the alarm clocks settings. You can also enable or disable the alarms. By pressing **Edit**, you can set the corresponding features of the alarm according to instructions.

- World clock
You can view the time in different cities.

Calculator

You can perform simple calculations. You can add, subtract, multiply or divide, and select M+, M-, MC, and MR to perform relevant operations.

Note: This calculator has limited accuracy and rounding errors may occur especially in long division.

- Stopwatch
Use it to record the time.

File manager

Go to **Menu→File manager**. You can check all the folders in the phone or memory card, create new ones or rename, delete, or sort, etc. The files you download from the internet will be stored in these folders.

Note: When you select **Format**, the data will be lost, so please be careful with this function.

How to Play Music

Go to **Menu→Multimedia→Audio player**. You can play the audio in your phone or the memory card.

In **List→Options**, you can refresh your playlist, set storage, or make personal settings.

Audio player supports: AMR-NB, WAV, MP3, iMelody, MIDI.

FM radio

Go to **Menu→Multimedia→FM radio**.

With the radio, you can search for radio channels and listen to them.

- 17 -

Go to **Settings→Browser options**. Select **Timeout** to set timeout. If the timeout period elapsed prior to completion of the operation or the server is not responding, it will show "Connection Failed". During the timeout period, it will keep trying to connect until expired. Select **Show images** to set whether or not to show the images. Select whether or not to enable **Cache and Cookies**.

Go to **Settings→Service message settings** to set the service message receiving.

Go to **Settings→Clear cache** to clear cache.

Go to **Settings→Clear cookies** to clear cookies.

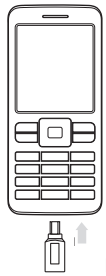
Questions & Answers

If you encounter problems while using the phone, or if it performs abnormally, you can refer to the chart below. If your particular problem cannot be resolved using the information in the chart, contact the dealer where you purchased the phone.

Problem	Possible causes	Possible solution
	The network signal is too weak at your current location, for example, in a basement or near a tall building, because wireless transmissions can not effectively reach it.	Move to a location where the network signal can be properly received.
Poor reception	The network is busy at the current time (for example, during peak times, there may be too much network traffic to handle additional calls).	Avoid using the phone at such times, or try again after waiting a short time.
	You are too far away from a base station for your service provider.	You can request a service area map from your service provider.

- 19 -

4. When the battery is fully charged, disconnect the charger.



Insert

Powering your Phone On/Off

Make sure that your SIM card is in your mobile phone and that the battery is charged.

Hold the **End/Power key** to power on/off the phone. The phone will automatically search for the network.

Turning the Torch On/Off

In the standby mode, hold the *** key** to turn on or off the torch.

- 12 -

- To delete someone from your Phonebook list, first select the name, then select **Options→Delete**.
- To view the memory status and so on, select **Options→Phonebook settings**.

How to Make and Receive Calls

The most basic way to make a call is to input the number in the standby mode and press the **Send key**. You can also make a call from the Phonebook list.

- To call someone: Go to **Menu→Phonebook**. Use the **Up/Down Navigation keys** to find the name of the person you want to call. You can also type in the first letter of the name of the person you want to call to find the right name, and press the **Send key**.
- To receive a call, press the **Left soft key** or the **Send key**.
- To end a call, press the **End/Power key**.
- To reject a call, press the **End/Power key**.

Make sure that you are in an area with sufficient coverage to make calls. The strength of the network signal is indicated on the Status Bar of the screen.

How to Send Messages

You can use your mobile phone to send and receive messages.

1. Go to **Menu→Messages→SMS/MMS→Write message**.
2. Write your message. For more information on input method, see section "Writing Text". When you write an SMS, press **Options→Send to**, and edit the recipient. When you write an MMS, you can edit To, Cc, Bcc, Subject and content. In content field, you can select **Options** and then select to add picture, audio, bookmark text, attachment and slide.
3. When you finish writing an SMS, select **Options** to send or save the message. When you finish writing an MMS, press **Done**, and select to send or save.

- 14 -

How to Set Your Phone

You can adjust various settings of your phone. Go to **Menu→Settings**.

- Dual SIM settings: Select dual SIM open, only SIM1/SIM2 open or flight mode.
- Phone settings: Set time and date and schedule power on/off, select language, set preferred input method, display, greeting text and LCD backlight.
- Network settings: Set to automatically or manually select network, and set the preferred networks.
- Security settings: Set security features to protect you from unauthorized use of your phone and SIM card.
- Connectivity: View connection activities and set data account.
- Restore factory settings: Enter the phone password to restore to the factory settings. Some personal information might be lost if you use this function, so be careful.

Note: You may be required to input the phone password in some of the security settings interfaces. The default password is 1234. Go to **Security settings→Change password→Phone password** to change the phone password.

Organizer

Go to **Menu→Organizer**.

- Calendar
Enter **Calendar**, the calendar of the current month will be displayed on the screen and the current date will be marked by a background box in a special colour.
You can browse the dates, and press the **4-Way Navigation keys** to switch the year and month; the information on the screen will also change consequently.
- Tasks
You can add tasks in this: Set Date, Call and Anniversary tasks.

- 16 -

Note that the quality of the radio broadcast depends on the coverage of the radio station in that particular area. In the FM radio interface, you can press the **Up/Down Navigation keys** to adjust volume, press the **Left/Right Navigation keys** to tune the frequency, and press the **Center key** to pause. Select **Options** to enter the submenu:

- Channel list: Edit up to 9 channels.
- Manual input: Manually input a channel.
- Auto search: Automatically searches for channels.
- Settings: You can turn on/off Background play, and you can turn on Loudspeaker when headset is inserted.

Games

Go to **Menu→Multimedia→Games**.

In Games, you can choose your favorite game to play. In **Games→Games settings**, you can set the games.

How to Use Services

Go to **Menu→Services**. Services allows you to view internet content. In Services you can use the STK (SIM card Toolkit) and WAP.

- STK

SIM card Toolkit (STK) services are value-added services provided by your network provider.

Your mobile phone supports STK service, but if your SIM card and network provider do not support the service, these functions can't be used.

- WAP

In WAP, select **Homepage** to go into your homepage.

Select **Bookmarks** to view the list of saved pages.

Select **Recent pages** to view the list of pages you recently visited.

Select **Input address** to go to a page by directly inputting the address.

Go to **Service inbox** to view the service messages.

Go to **Settings→Select SIM** to select a SIM card which you wish to use to connect.

Go to **Settings→Profiles** to select a profile or add a new one.

- 18 -

Problem	Possible causes	Possible solution
Echo or noise	Poor network trunk quality on the part of your service provider.	Press End key and dial again. You may be switched to a better-quality network trunk or phone line.
	Poor local telephone line quality.	Press End key and dial again. You may be switched to a better-quality network trunk or phone line.
Unable to select certain features	Your service provider does not support these features, or you have not applied for services that provide these features.	Contact your service provider.
Battery not charge	The battery or battery charger is damaged.	Contact the dealer.
	The phone's temperature is below 0°C or higher than 45 °C.	Adjust the battery charging environment to avoid extremes of temperature.
	Poor contact between the battery and charger.	Check all connectors to make sure all connections have been properly made.

- 20 -

Problem	Possible causes	Possible solution
Shortened standby time	The standby time is related to your service provider system configuration. The same phone used with different service providers' systems will not provide exactly the same length of standby time.	If you are located in an area where signaling is weak, temporarily power off the phone.
	The battery is depleted. In high-temperature environments, battery life will be shortened.	Use a new battery.
	If you are not able to connect to the network, the phone will continue to send out signals as it attempts to locate a base station. Doing so consumes battery power and will consequently shorten standby time.	Change your location to one where the network is accessible, or temporarily turn off your phone.
Cannot switch your phone on	Battery power has been depleted.	Recharge the phone's battery.
USIM card error	USIM card malfunction or damage.	Take the USIM card to your service provider for testing.
	USIM card inserted improperly.	Insert the USIM card properly.
	Debris on the USIM card contacts.	Use a soft, dry cloth to clean the USIM card contacts.

- 21 -

Problem	Possible causes	Possible solution
Unable to connect to the network	USIM card invalid.	Contact your service provider.
	You are not within the network's service area.	Check the service area with your service provider.
	Poor signal.	Move to an open space, or if you are inside a building, move closer to a window.
Cannot answer incoming calls	You have activated the Call barring feature.	Go to Call center > Call settings > SIM1/SIM2 call settings > Call barring , and then select Cancel all .
You cannot make outgoing calls	You have activated the Call barring feature.	Go to Call center > Call settings > SIM1/SIM2 call settings > Call barring , and then select Cancel all .
	You have activated the Fixed dial feature.	Go to Settings > Security settings > SIM1/SIM2 security settings > Fixed dial and select Off .
PIN Code blocked	You have entered an incorrect PIN code three consecutive times.	Contact your service provider. If the service provider provides the USIM card's PUK code, use the PUK code to unlock the USIM card.
Unable to enter information into the Phonebook	The Phonebook's memory is already full.	Delete unnecessary data from the contacts.

- 22 -