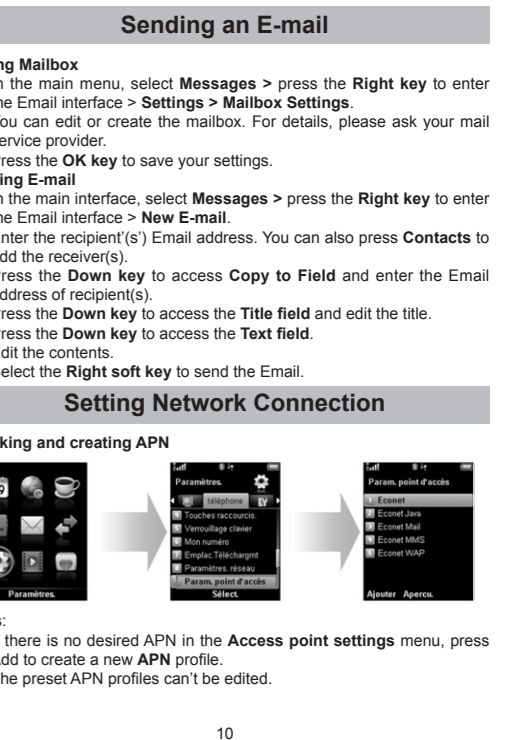
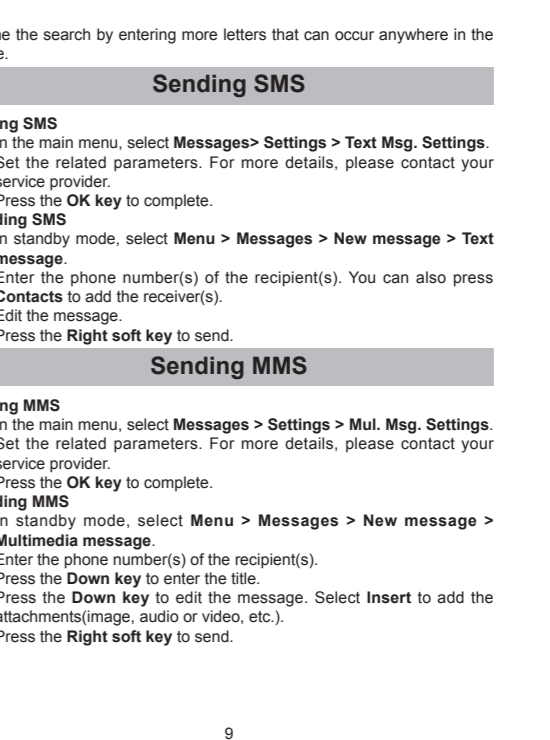
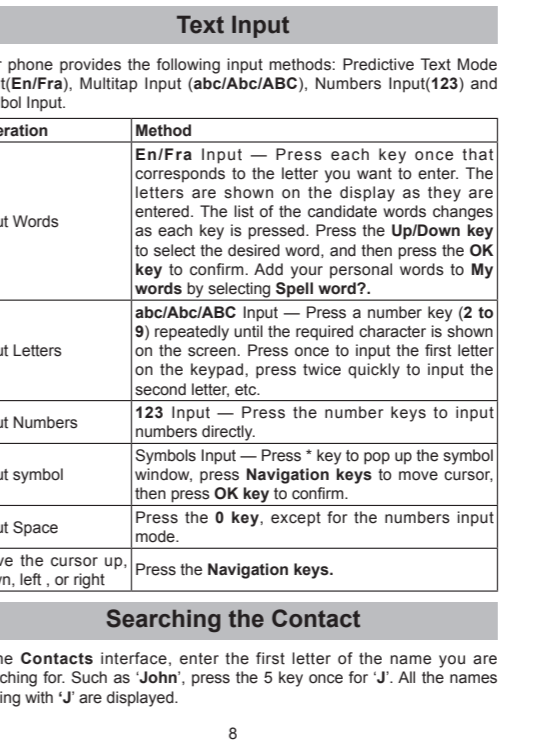
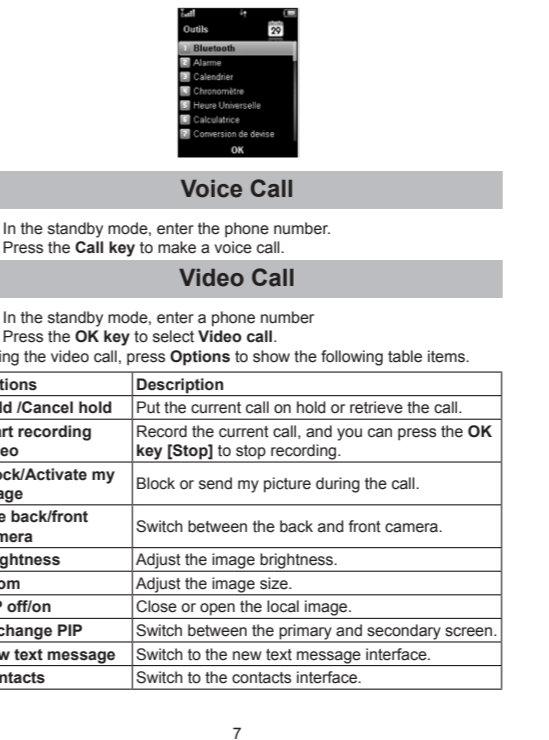
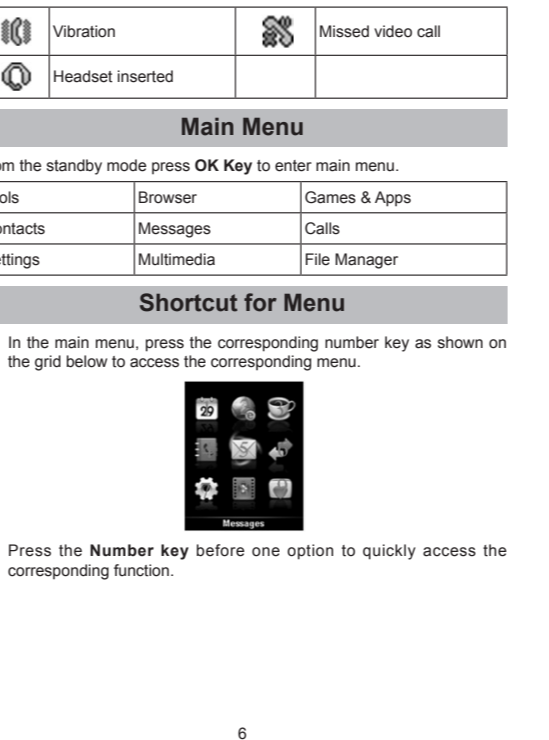
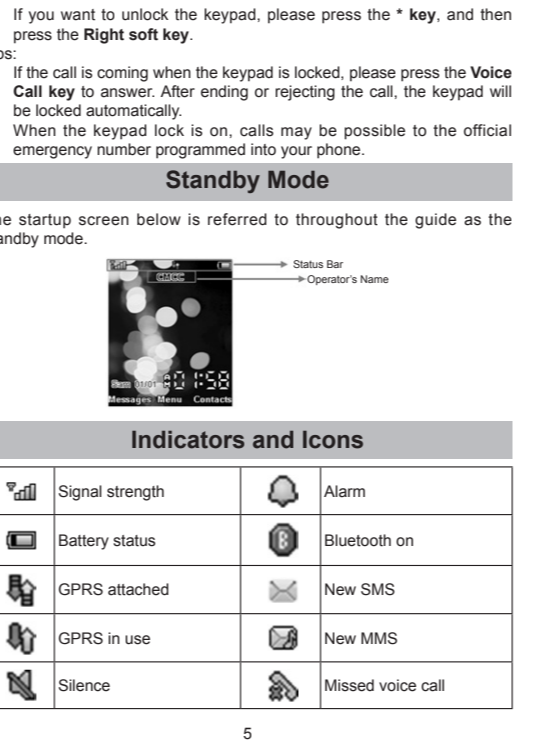
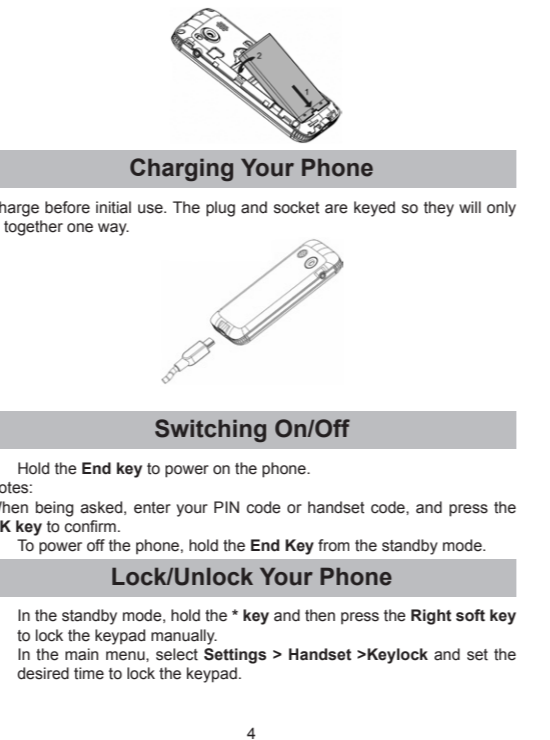
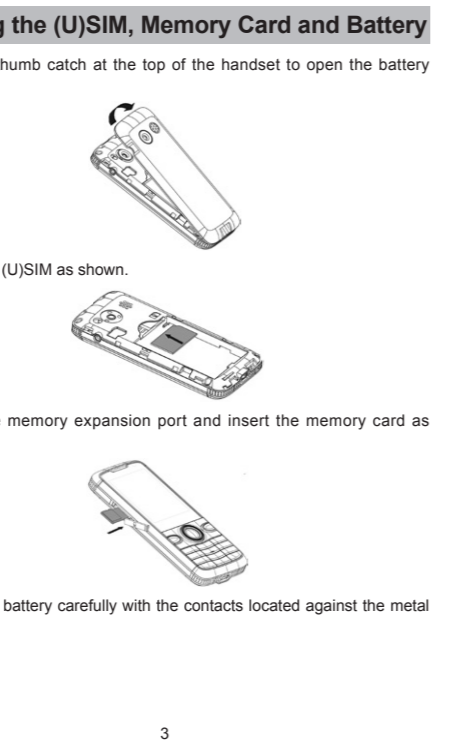


ZTE F100
WCDMA Dual Band 3G Mobile Phone
Quick Guide

LEGAL INFORMATION
Copyright © 2011 ZTE CORPORATION.
All rights reserved.
No part of this publication may be excerpted, reproduced, translated or utilized in any form or by any means, electronic or mechanical, including photocopying and microfilm, without the prior written permission of ZTE Corporation.
The manual is published by ZTE Corporation. We reserve the right to make modifications on print errors or update specifications without prior notice.
Version No. : 1.0
Edition Time: 06-2011
Manual No. : 079584503225

ZTE中兴 ZTE CORPORATION
NO. 55, Hi-tech Road South, ShenZhen, P.R.China
Postcode: 518057 Website: http://www.zte.com.cn
Tel: +86-755-26779999 E-mail: mobile@zte.com.cn



Setting the connection

1. Select **Menu > Settings > Handset > Connections**
2. Press **Add** to create a new connection profile. Enter the necessary information and select the proper APN.



3. Press **OK** to finish.
- Notes:
The preset connection profiles can't be edited.

Browsing the Website

Activating the proper connection.



Using Bluetooth to send one file

1. Enable the **Bluetooth** function.



2. Find the file which you want to send.

Notes:

Press **Search** to scan the available device(s).

3. Select the destination device, and follow the prompts to finish procedure.

Viewing the Pictures

Additional features when you view one picture:

Feature	Function Key
Full Screen	Right soft key
Zoom in and out	Up and Down key
Rotate the image	1,3 keys

Notes:

Zoom in or out is available only in the full screen mode.

Enjoying the Video

Additional features when you view one video:

Feature	Function Key
Volume up and down	Up and Down keys
Brightness	2,8 keys

Streaming

In the main menu, select **Multimedia > Streaming URL** to enter the streaming interface.

TV channels are links to audio or video streaming content that are available through the browser (similar to bookmarks). The streaming content is only available while you are connected to the server, depending on your service provider or available content.

1. If there is no Streaming URL list, press **Add** to add a new streaming file, input the **Title** and **URL** and then press the **OK key** to save.

2. In the Streaming URL list interface, press **Open** to open the URL, press **Options** for more options:

New URL: Create a new streaming URL.
Send: Send the selected URL via SMS, MMS or E-mail.
Delete: Delete the selected URL.
Delete all: Delete all the URLs.
Info.: View the information about the selected URL.

Using the Phone as Modem

If you activate data service function, your phone will be used as a modem. And the following steps are only for reference.

1. Choose **USB** connection mode.



2. Set the modem related parameters, press **OK** to save.



Notes:

For the detail settings, please consult your service provider.

3. Launch **Join Me** application software, and then click **Connect** to establish the connection between your phone and the software.

4. Click the **Internet** tab.
5. Click the **Connect** button to access to the Internet.

Technical Parameters

Handset Standards	WCDMA: 2100 MHz; GSM: 900,1800 MHz
Dimensions (L×W×H)	106 mm*46 mm*12.6 mm
Weight	Approx 80 g (including battery)
Display	TFT, 2.0", 176*220, 262K
Back/front camera	0.3 M/2 M pixel camera
Extended memory	8 G microSD card
Battery	1000 mA hours, Lithium ion (Li-ion)
Performance	BMP/JPG/GIF image; 3GP/MP4 video; MP3/AMR/WAV/ACC/ACC+ audio; JAVA MIDP 2.0; MMS Video and Picture, Calendar, Speakerphone, Voice Recorder
Continuous idle time	Up to 250 hours
Continuous talk time	About 150 minutes
Charge time	Approximately 3 to 4 hours

Notes:

The phone's talk time and idle time are based on ideal working environments. The use of extended backlighting, browser, and network conditions can reduce battery life and talk/idle time.

Safety Information

General Care

Your handset contains delicate electronic circuitry, magnets and battery systems. You should treat it with care and give particular attention to the following points:

- Do not allow the handset, battery or accessories to come into contact with liquids or moisture at any time. Do not immerse the handset in any liquid.

- Do not place the handset alongside computer disks, credit cards, travel cards and other magnetic media. The information contained on disks or cards may be affected by the handset.
- Do not paint the handset.
- Do not leave the handset or the battery in places where the temperature could exceed 60 °C, e.g. on a car dashboard or a windowsill, behind glass in direct sunlight, etc.
- Do not remove the handset's battery while the handset is switched on.
- Take care not to allow metal objects, such as coins or key rings to contact or short-circuit the battery terminals.
- Do not dispose of battery in a fire. The handset's Li-ION batteries may be safely disposed of at a Li-ION recycling point. Follow local requirements for recycling.
- Do not put the handset's battery in your mouth, as battery electrolytes may be poisonous if swallowed.
- Do not attempt to dismantle the handset or any of its accessories.
- Do not put a battery into a microwave oven, dryer, or high-pressure container.
- Do not contact battery directly to an electric outlet or cigarette lighter charger. Use only approved charger units.
- Do not pierce battery with a sharp object such as a needle.
- Do not disassemble or modify the battery.
- Do not use a damaged or deformed battery.
- Do not drop, throw, or subject the handset to rough treatment.
- Do not solder the battery directly.
- Stop using the battery if abnormal heat, odor, discoloration, deformation, or abnormal condition is detected during use, charge, or storage.
- Remove the battery whose life cycle has expired from equipment immediately.
- This equipment is fitted with an internal battery. Take it to a qualified service engineer when the replacement of the battery is required.
- The earpiece may become warm during normal use. Also, the handset itself may become warm while the battery is being charged.
- When a handset is in vibration mode, the vibration can sometimes cause the handset to move.

Warning:

In the unlikely event of a battery leak, take care to keep the battery discharge away from your eyes or skin. If the leakage does come into contact with the eyes or skin, please flush thoroughly in clean water and consult with a doctor.

General Guidelines

- In some countries, national law prohibits private copying of copyrighted material. Please check the national legislation of the applicable country concerning the use of such material.
- Many jurisdictions have laws and regulations about taking pictures in public or private areas and regarding the processing and further use of such pictures. The manufacturer encourages its customers to obey all laws and to respect the personal rights of others.
- Please check roaming agreement availability with your service provider.
- The use of mobile phones is not allowed in some radiation sensitive areas, such as hospitals, research centers and airplanes. The user is responsible to power-off the device. If there is any uncertainty, you should remove the battery from the handset.
- Observe any signs that indicate powering off handsets, such as those near gas stations, or explosives, and power off the handset/device immediately.
- If you have a heart condition, be careful with the settings of call vibration or tone volume.

- Be careful not to place the handset near heat sources (such as a heater) or too close to the edge of the table.
- Power off your phone before you clean it. Use a damp or anti-static cloth to clean the handset. Do not use an ordinary dry cloth or electrostatic cloth. Do not use chemical or abrasive cleaners as these could damage the casing.
- Remember to make backup copies of all important data on your handset.
- Remember to recycle: the cardboard packing supplied with this handset is ideal for recycling.

Warning:

In the unlikely event of a battery leak, take care to keep the battery discharge away from your eyes or skin. If the leakage does come into contact with the eyes or skin, please flush thoroughly in clean water and consult with a doctor.

General Guidelines

- In some countries, national law prohibits private copying of copyrighted material. Please check the national legislation of the applicable country concerning the use of such material.
- Many jurisdictions have laws and regulations about taking pictures in public or private areas and regarding the processing and further use of such pictures. The manufacturer encourages its customers to obey all laws and to respect the personal rights of others.
- Please check roaming agreement availability with your service provider.
- The use of mobile phones is not allowed in some radiation sensitive areas, such as hospitals, research centers and airplanes. The user is responsible to power-off the device. If there is any uncertainty, you should remove the battery from the handset.
- Observe any signs that indicate powering off handsets, such as those near gas stations, or explosives, and power off the handset/device immediately.
- If you have a heart condition, be careful with the settings of call vibration or tone volume.

- Do not allow children to play with the handset, charger or batteries.
- Do not use the handset where blasting is in progress.
- Do not try to make a call or conversation while the temperature of charging battery is above 50°C.
- Take care not to put your handset in the back pocket of your trousers or skirt and then sit on it. Also, do not put your phone at the bottom of bag where it may subject to excessive weight or pressure. Doing so may damage the LCD and camera lens and cause them malfunction.
- The operation of some medical electronic devices, such as hearing aids and pacemakers, may be affected if a handset is used next to them. Observe any caution signs and the manufacturer's recommendations.
- Do not leave the handset discharged or without a battery for a long time, otherwise some data may be erased.
- Your phone contains metal, which may cause you an itch, a rash or eczema depending on your physical condition.

Road Safety

- You must exercise proper control of your vehicle at all times. Give your full attention to driving.
- Observe all of the recommendations contained in your local traffic safety documentation.
- Pull off the road and park before making or answering a call, if driving conditions require so. Check if local laws and/or regulations restrict the use of handsets while driving
- You must not stop on the hard shoulder of a motorway to answer or make a call, except in an emergency.
- Power off your handset at a refueling point, such as a gas station, even if you are not refueling your own car.
- Do not store or carry flammable or explosive materials in the same compartment as the handset.
- Electronic systems in vehicle, such as anti-lock brakes, speed control and fuel injection systems are not normally affected by radio transmissions. The manufacturer of such equipment can advise if it is adequately shielded from radio transmissions. If you suspect vehicle problems caused by radio transmissions, consult your dealer and do not power on the handset until it has been checked by a qualified technician.

Hospital Safety

- Power off your phone and remove the battery in areas where the use of handsets is prohibited.
- Follow the instructions given by the respective medical facility regarding the use of handsets on their premises.

Emergency Service

To make an emergency call in any country:

1. Ensure that your handset is on and in service.
2. Press the **End key** as many times as needed to clear the display and ready the device for calls.
3. Enter the official emergency number for your present location, for example, 112 (the international emergency number).
4. Press the **Call key** to dial the number. Follow instructions received and do not end the call until told to do so.

When the (U)SIM card is not inserted or when the dial lock function is on, Press **SOS** and then enter the official emergency number for your present location. Press the **Call key** to dial the number.

Notes:

- Tell the operator which service you require: Police, Ambulance, Fire Brigade, Coastguard or Mountain Rescue Service. Tell them where you are and remain stationary to maintain contact if possible.
- Due to the nature of the cellular system, the connection of emergency calls cannot be guaranteed. You should never rely solely on any wireless device for essential communications like medical emergencies.

Third Party Equipment

The use of third party equipment, cables or accessories, not made or authorized by ZTE, may invalidate the warranty of your handset and also adversely affect the phone's safety/operation.

problems caused by radio transmissions, consult your dealer and do not power on the handset until it has been checked by a qualified technician.

Hospital Safety

- Power off your phone and remove the battery in areas where the use of handsets is prohibited.
- Follow the instructions given by the respective medical facility regarding the use of handsets on their premises.

Emergency Service

To make an emergency call in any country:

1. Ensure that your handset is on and in service.
2. Press the **End key** as many times as needed to clear the display and ready the device for calls.
3. Enter the official emergency number for your present location, for example, 112 (the international emergency number).
4. Press the **Call key** to dial the number. Follow instructions received and do not end the call until told to do so.

When the (U)SIM card is not inserted or when the dial lock function is on, Press **SOS** and then enter the official emergency number for your present location. Press the **Call key** to dial the number.

Notes:

- Tell the operator which service you require: Police, Ambulance, Fire Brigade, Coastguard or Mountain Rescue Service. Tell them where you are and remain stationary to maintain contact if possible.
- Due to the nature of the cellular system, the connection of emergency calls cannot be guaranteed. You should never rely solely on any wireless device for essential communications like medical emergencies.

Third Party Equipment

The use of third party equipment, cables or accessories, not made or authorized by ZTE, may invalidate the warranty of your handset and also adversely affect the phone's safety/operation.

Vehicles Equipped with an Airbag

An airbag inflates with great force. Do not place objects, including either installed or portable wireless equipment, in the area over the airbag or in the airbag deployment area. If in-vehicle wireless equipment is improperly installed and the airbag inflates, serious injury could result.

Aircraft Safety

- Power off your phone before the airplane takes off. In order to protect airplane's communication system from interference, it is prohibited to use mobile phone in flight. If you want to use mobile phone before the airplane takes off, you should get aircrew's permission according to safety regulations.
- If the mobile phone has the function of automatic timing power-on, please check your alarm setting to ensure that your phone will not be automatically powered on during the flight.

Privacy Information

Camera usage and photo/audio/video recordings carried out with the handset can offend the confidentiality of the subjects. The user therefore is held to respect legislation in confidentiality matter and remains the only responsible subject in case of eventual violations of the enforced norm.

Copyright Notice

The video/audio recordings you make/download are protected by copyright laws. They are for personal use only and must not be otherwise used without the permission of the copyright owner.

Disposing of Your Phone



The symbol brought back on the equipment indicates that the



refusal must be object of "separate collection".

Therefore, the customer will have to confer (or to make to confer) the refusal to the centers of differentiated collection predisposed from the local administrations, or to deliver it to the retailer in exchange of one new equipment purchased.

The differentiated collection of the refusal and the successive operations of treatment, recovery and waste help the production of equipment with recycle material and limit the hazardous effects on the atmosphere and the health eventually caused from one improper management of the refusal.

The illicit disposal of the product by the customer involves the application of the administrative endorsements of which to article 254 and following of the D.Lgs. 152, April 3rd 2006.

According to the article, the 13, D.Lgs. 25th July 2005, n. 151 "Performance of the Directives 2002/95/CE, 2002/96/CE and 2003/108/CE, relative to the reduction of the use of dangerous substances in the equipment electronic electrical workers and, let alone to the disposal of the refusals".

Limitation of Liability

ZTE shall not be liable for any loss of profits or indirect, special, incidental or consequential damages resulting from or arising out of or in connection with using this product, whether or not ZTE has been advised, knew or should have known the possibility of such damages. Refer to the enclosed warranty card for full warranty and service information.