

Introduction

The Etisalat USB modem is a multi-mode USB modem, working in HSPA+/HSUPA/HSDPA/WCDMA/EDGE/GPRS/GSM networks. With USB interface connecting to a laptop or a desktop PC, it integrates the functionality of a modem and a mobile phone (SMS), and combines mobile communication with Internet perfectly. It supports data and SMS services through the mobile phone network, enabling you to communicate anytime and anywhere.

Specification

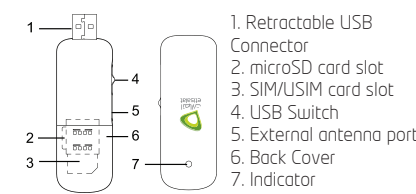
The following table shows the specification of your device.

Interface Type	USB 2.0 HIGH SPEED
Systems supported	Supports most types of laptop and desktop PC.
Operating systems supported	Windows XP, Vista, Windows 7 MAC 10.4, 10.5, 10.6
Functions	SMS service, Data service, Applications management, support microSD card, etc.
Network Standards	HSPA+/HSUPA/HSDPA/WCDMA/EDGE/GPRS/GSM
Transmission speed (Max)	HSPA+: 21.6 Mbps DL HSUPA: 5.76 Mbps UL HSDPA: 7.2 Mbps DL
Temperature	Storage: -40°C ~ +80°C Operation: -10°C ~ +60°C
Dimension	77.25mm×28 mm×12 mm
Weight	About 26g
microSD capability	Support up to 32GB microSD card

Notes: microSD is a trademark of SD Card Association.

Getting to know your device

The following figure shows the appearance of the USB modem. It is only for your reference. The actual product may be different.

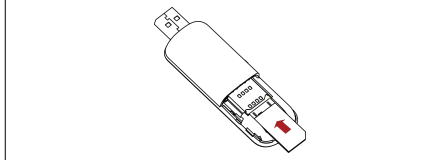


Hardware Installation

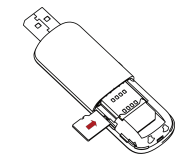
1. Slide the back cover and remove it.



2. Insert the SIM/USIM card into the SIM/USIM card slot. Insert the SIM/USIM card with the metal contact area facing downwards into the slot, shown as the following picture.



3. Insert the microSD card into the microSD card slot. **Notes:** This modem only supports microSD card. Insert your microSD card into the microSD card slot, and make sure that the metal contact side of the microSD card facing upwards, shown as the following picture.

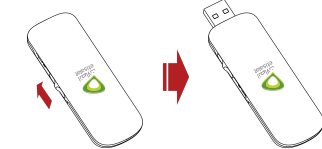


4. Slide the back cover and lock the cover in its place.

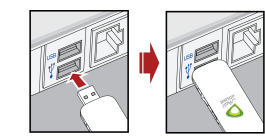


5. Connect the Modem to your laptop or desktop PC.

- Push the USB switch, and then the retractable USB connector is available.



- Plug the USB connector into your computer's USB port and make sure that it is tightly inserted.



- The OS automatically detects and recognizes new hardware and starts the installation wizard.

Software Installation Guide

On different operating systems, the installation procedures may be difference. Follow the system prompts during operation.

• For Windows OS

Your system will start the software setup process automatically when you connect the modem to your computer correctly. Follow the system prompts to complete the software installation.

Notes: If the system does not launch installation automatically, you can run the installation program in path of **My Computer** → **Etisalat Modem**.

• For Mac OS

The system will automatically display a **Etisalat Modem** CD-ROM icon on the desktop, when you connect the modem to your computer correctly. Double click the installation software package in the **Etisalat Modem**, and follow the system prompts to complete the software installation.

Safe removal from your system

Please close the application software, and then you can pull out the USB Modem safely.

How to use your modem

Various icons are presented to enable quick operation of the following functions:

HomePage	Visit www.etisalat.com.eg
Connection	Connect to the Internet.
Short Message	Send SMS or read SMS
PhoneBook	Save and view the different information of the contact list.
Settings	Set normal relative information for the modem.
Account	Unstructured Supplementary Service Data. Recharge your account, and check the balance of your account.
Help	Show the help information.

Warning and Notice

To the owner

- Some electronic devices are susceptible to electromagnetic interference sent by modem if inadequately shielded, such as the electronic system of vehicles. Please consult the manufacturer of the device before using the modem if necessary.
- Operating of laptop and desktop PCs and the modem may interfere with medical devices like hearing aids and pacemakers. Please always keep them more than 20 centimeters away

from such medical devices when they are turned on. Turn the modem off if necessary. Consult a physician or the manufacturer of the medical device before using the modem.

- Be aware of the usage limitation when using a modem at places such as oil warehouses or chemical factories, where there are explosive gases or explosive products being processed. Turn off your modem if required.
- The use of electronic transmitting devices is forbidden in aircrafts, at petrol stations and in hospitals. Please observe and obey all warning signs and switch off your modem in these conditions.
- Do not touch the inner antenna area if not necessary. Otherwise it will affect your modem's performance.
- Store the modem out of the reach of little children. The modem may cause injury if used as a toy.
- Do not touch the metallic parts of the modem so as to avoid a burn, when the modem is working.

Using your USB Modem

- Please use original accessories or accessories that are authorized. Using any unauthorized accessories may affect your modem's performance, and violate related national regulations about telecom terminals.

- Avoid using the modem near or inside metallic structures or establishments that can emit electromagnetic waves. Otherwise it may influence signal reception.
- The modem is not waterproof. Please keep it dry and store in a shady and cool place.
- Do not use the modem immediately after a sudden temperature change. In such case, it will produce dew inside and outside the modem, so don't use it until it becomes dry.
- Handle the modem carefully. Do not drop, bend or strike it. Otherwise the modem will be damaged.
- No dismantling by non-professionals and only qualified technicians can undertake repair work.
- Operating temperature range of -10°C ~ +60°C and humidity range of 5% ~ 95% are recommended.

Limited Warranty

- This warranty does not apply to defects or errors in the Product caused by:
 - Reasonable abrasion.
 - End User's failure to follow Etisalat's installation, operation or maintenance instructions or procedures.
 - End User's mishandling, misuse, negligence, or improper installation, disassembly, storage, servicing or operation of the Product.

- Modifications or repairs not made by Etisalat or a Etisalat-certified individual.
 - Power failures, surges, fire, flood, accidents, actions of third parties or other events outside Etisalat's reasonable control.
 - Usage of third-party products, or usage in conjunction with third-party products provided that such defects are due to the combined usage.
 - Any other cause beyond the range of normal usage intended for the Product.
- End User shall have no right to reject or return the Product, or receive a refund for the Product from Etisalat under the above-mentioned situations.

- This warranty is End User's sole remedy and Etisalat's sole liability for defective or nonconforming items, and is in lieu of all other warranties, expressed, implied or statutory, including but not limited to the implied warranties of merchantability and fitness for a particular purpose, unless otherwise required under the mandatory provisions of the law.

Limitation of Liability

Etisalat shall not be liable for any loss of profits or indirect, special, incidental or consequential damages resulting from or arising out of or in connection with using of this product, whether or not Etisalat had been advised, knew or should have known of the possibility of such damages, including, but not limited to lost profits, interruption of business, cost of capital, cost of substitute facilities or product, or any downtime cost.

Get Help

If you can't find what you need, we are here to help. Please contact Customer Care through the following:
 From Etisalat mobile line
 Call 333
 From other mobile lines
 011 1234 333
 From any landline
 02 3534 6 333
 From international
 +20 111 234 333
 Or visit our website www.etisalat.com.eg