



NO.55, Hi-tech Road South, Shenzhen, P.R.China  
 Postcode: 518057 Service Hotline: +86-755-26779999  
<http://www.zte.com.cn> E-mail: mobile@zte.com.cn

## Etisalat Nigeria HSUPA USB Modem

### Quick Guide



### Introduction

The etisalat Nigeria HSUPA USB modem is a multi-mode, 3G USB modem, working in HSUPA/HSDPA/WCDMA/EDGE/GPRS/GSM networks. With USB interface connecting to a laptop or a desktop PC, it integrates the functionality of a modem and a mobile phone (SMS), and combines mobile communication with Internet perfectly. It supports data and SMS services through the mobile phone network, enabling you to communicate anytime and anywhere.

### Specification

The following table shows the specification of your device.

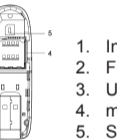
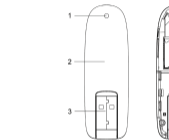
Interface Type	USB 2.0 high speed
Systems supported	Supports most types of laptop and desktop PC.
Operating systems supported	Windows XP, Vista, Windows 7 MAC 10.4 or above

Functions	SMS service, Data service, Applications management, support microSD card, etc.
Network Standards	HSUPA/HSDPA/WCDMA/EDGE/GPRS/GSM
Transmission speed (Max)	HSUPA: 5.76Mbps UL HSDPA: 7.2Mbps DL
Temperature	Storage: -40°C ~ +80°C Operation: -10°C ~ +55°C
Dimension	76mm×24.5mm×10mm
Weight	About 25g
microSD capability	Support up to 32GB microSD card

Notes: microSD  is a trademark of SD Card Association.

### Getting to know your device

The following figure shows the appearance of the MF631. It is only for your reference. The actual product may be different.



1. Indicator
2. Front Cover
3. USB Connector
4. microSD card slot
5. SIM/USIM card slot

### Hardware Installation

1. Put finger on the bottom finger grip, and then lift the cover of the modem to release and remove.



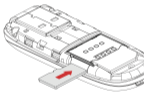
Notes:

Do not open the cover rudely so as to avoid the damage of the cover.

2. Insert the SIM/USIM card into the SIM/USIM card slot. Insert the SIM/USIM card with the metal contact area facing downwards into the slot, shown as the following picture.



3. Insert the microSD card into the microSD card slot. Insert your microSD card into the microSD card slot, shown as the following picture.



Notes:

This modem only supports microSD card.

4. Put the cover of the modem flatly upon the body of modem. Direct the cover towards the locking catches on the sides of the modem and push the cover of the modem to lock the cover into its place.



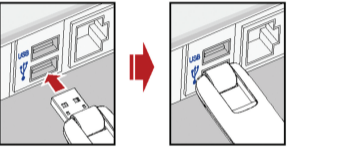
ZTE CORPORATION

NO. 55, Hi-tech Road South, Shenzhen, P.R.China  
 Postcode: 518057 <http://www.zte.com.cn> [mobile@zte.com.cn](mailto:mobile@zte.com.cn)  
 Service Hotline : +86-755-26779999

The information on the package is only for your reference. Images are for your reference only. Please check the product model before purchasing. ZTE reserves the rights to change specifications and parameters of the products without further notice.

5. Connect the Modem to your laptop or desktop PC.

- Rotate the USB connector and plug the USB connector into your computer's USB port. Make sure that it is tightly inserted.



- The OS automatically detects and recognizes new hardware and starts the installation wizard.

### Software Installation Guide

On different operating systems, the installation procedures may be difference. Follow the system prompts during operation.

### For Windows OS

Your system will start the software setup process automatically when you connect the modem to your computer correctly. Follow the system prompts to complete the software installation.

#### Notes:

If the system does not launch installation automatically, you can run the installation program in path of **My Computer > etisalat Nigeria > Install.exe**.

### For Mac OS

The system will automatically display a **etisalat Nigeria** CD-ROM icon on the desktop, when you connect the modem to your computer correctly. Double click the installation software package in the **etisalat Nigeria**, and follow the system prompts to complete the software installation.

### Safe removal from your system

Close the etisalat Nigeria management software, and then remove your modem safely.

### How to use your modem

Various icons are presented to enable quick operation of the following functions:

	Connection	Click <b>Connect</b> button to connect to the Internet.
	SMS	Click <b>SMS</b> button, enter recipient's number and content, and then click <b>Send</b> to send new message.
	Phonebook	Click <b>New</b> to fill in a new contact person and contact details.
	Settings	Set the configuration for the modem.
	My Account	Check your balance, recharge and use other USSD functions.
	Help	Show the help information.

### Warning and Notice

#### To the owner

- Some electronic devices are susceptible to electromagnetic interference sent by modem if inadequately shielded, such as the electronic system of vehicles. Please consult the manufacturer of the device before using the modem if necessary.
- Operating of laptop and desktop PCs and the modem may interfere with medical devices like hearing aids and pacemakers. Please always keep them more than 20 centimeters away from such medical devices when they are turned on. Turn the modem off if necessary. Consult a physician or the manufacturer of the medical device before using the modem.
- Be aware of the usage limitation when using a modem at places such as oil warehouses or chemical factories, where there are explosive gases or explosive products being processed. Turn off your modem if required.

#### Using your USB Modem

- The use of electronic transmitting devices is forbidden in aircrafts, at petrol stations and in hospitals. Please observe and obey all warning signs and switch off your modem in these conditions.
- Do not touch the inner antenna area if not necessary. Otherwise it will affect your modem's performance.
- Store the modem out of the reach of little children. The modem may cause injury if used as a toy.
- Do not touch the metallic parts of the modem so as to avoid a burn, when the modem is working.
- Please use original accessories or accessories that are authorized. Using any unauthorized accessories may affect your modem's performance, and violate related national regulations about telecom terminals.
- Avoid using the modem near or inside metallic structures or establishments that can emit electromagnetic waves. Otherwise it may influence signal reception.
- The modem is not waterproof. Please keep it dry and store in a shady and cool place.

- Do not use the modem immediately after a sudden temperature change. In such case, it will produce dew inside and outside the modem, so don't use it until it becomes dry.
- Handle the modem carefully. Do not drop, bend or strike it. Otherwise the modem will be damaged.
- No dismantling by non-professionals and only qualified technicians can undertake repair work.
- Operating temperature range of -10°C ~ +55°C and humidity range of 5% ~ 95% are recommended.