

Security

- To protect your mobile phone from illegal use, take the security measures as follows:
 - Set PIN codes of the SIM card.
 - Set handset password.
 - Set call restrictions.

Safety Precautions

This section includes some important information on safe and efficient operation. Please read this information before using the phone.

Operational Precautions

- Please use your phone properly. When making or receiving a call, please hold your phone as holding a wireline telephone. Make sure that the phone is at least one inch (about two point five centimeters) from your body when transmitting.
- Do not touch the antenna when the phone is in use. Touching the antenna area affects call quality and may cause the phone to operate at a higher power level than needed.
- Some people may be susceptible to epileptic seizures or blackouts when exposed to flashing lights, such as when watching television or playing video games. If you have experienced seizures or blackouts, or if you have a family history of such occurrences, please consult your doctor before playing video games on your phone or enabling a flashing-light feature on your phone. (The flashing-light feature is not available on all products.)
- Keep the phone out of the reach of small children. The phone may cause injury if used as a toy.

- Turn off your phone before you clean it. Use a damp or anti-static cloth to clean the phone. Do not use a dry cloth or electrostatically charged cloth. Do not use chemical or abrasive cleaners as these could damage the phone.
- As your mobile phone can produce electromagnetic field, do not place it near magnetic items such as computer disks.
- Using the phone near electrical appliances such as TV, telephone, radio and personal computer can cause interference.
- Do not expose your mobile phone to direct sunlight or store it in hot areas. High temperatures can shorten the life of electronic devices.
- Keep your phone dry. Any liquid may damage your phone.
- Do not drop, knock or harshly treat the phone. Rough handling can break internal circuit boards.
- Do not connect the phone with any incompatible enhancement.
- Do not attempt to disassemble the mobile phone or battery.
- Do not store the phone with flammable or explosive articles.
- Do not charge the mobile phone without battery.

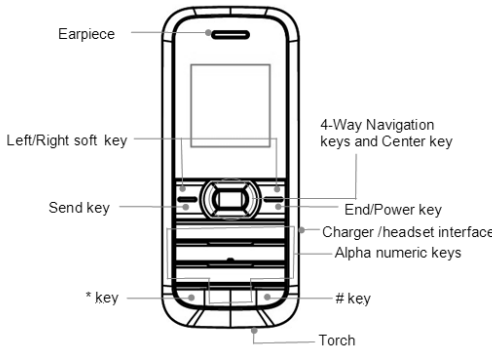
Precautions for Potentially Explosive Atmospheres

- Switch off your phone prior to entering any area with potentially explosive atmospheres, such as fueling areas, fuel or chemical transfer or storage facilities.
- Do not remove, install, or charge batteries in such areas. Spark in a potentially explosive atmosphere can cause an explosion or fire resulting in bodily injury or even death.
- To avoid possible interference with blasting operations, switch off your phone when you are near electrical blasting caps, in a blasting area, or in areas posted "Turn off electronic devices." Obey all signs and instructions.

- Do not store battery in hot areas or throw it into fire. Otherwise, it will cause explosion.
- Do not disassemble or refit the battery. Otherwise, it will cause liquid leakage, overheating, explosion and ignition of the battery.
- Please store the battery in a cool dry place if you don't use it for a long period.
- The battery can be recharged for hundreds of times, but it will eventually wear out. When the operating time (talk time and standby time) is noticeably shorter than normal, it is time to replace it with a new one.
- Please stop using the charger and battery when they are damaged or show evidence of aging.
- Return the worn-out battery to the provider or dispose of it in accordance with environment regulations. Do not dispose of it in household rubbish.
- Please use original batteries or batteries approved by the phone manufacturer. Using any unauthorized battery may affect your handset performance or may cause danger of explosion, etc.

Warning: If the battery is damaged, do not discharge it. If the leakage does come into contact with the eyes or skin, wash thoroughly in clean water and consult a doctor.

Key Functions



Interface Icons

	Signal strength		New SMS
	Keypad locked		Call diverting
	Battery status		General
	Alarm clock set		Headset
	Missed call		Silent

Battery

The lithium ion battery of the mobile phone can be immediately used after unpacking.

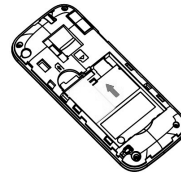
Installing the battery

1. Pull the battery cover from the notch on the top edge and remove the cover.
2. Insert the battery by aligning the gold-coloured contacts with the contacts in the battery slot.
3. Push down the upper section of the battery until it clicks into place.
4. Fix the battery cover till you hear the click sound.

Inserting the SIM Card

Insert the SIM card as follows:

1. Make sure that the phone is switched off and the charger is disconnected from the phone.
2. Turn the phone over and remove the battery cover.
3. Remove the battery if it is already installed.
4. Hold your SIM card with the cut corner oriented as shown and then slide it into the card holder with the gold-coloured contacts facing downwards.
5. Install your battery.
6. Fix the battery cover till you hear the click sound.



Insert the SIM card

SIM (Subscriber Identity Module) card is a micro chip from a network provider that keeps the carrier details and customers information such as names and phone numbers. Your phone won't work without it. If you already have contacts on your SIM card, they can be transferred in most cases.

Precautions While Driving

- Please pay attention to the traffic safety. Check the laws and regulations on the use of your phone in the area where you drive. Always obey them.
- Use hands-free function of the phone, if available.
- Pull off the road and park before making or answering a call if conditions require.

Precautions for Medical Devices and Facilities

- When using your phone near pacemakers, please always keep the phone more than eight inches (about twenty centimeters) from the pacemaker when the phone is switched on. Do not carry the phone in the breast pocket. Use the ear opposite the pacemaker to minimize the potential for interference. Switch off the phone immediately if necessary.
- Some phones may interfere with some hearing aids. In the event of such interference, you may consult your hearing aids manufacturer to discuss alternatives.
- If you use any other personal medical device, please consult the manufacturer of your device to determine if it is adequately shielded from RF(radio frequency) energy.
- In those facilities with special demand, such as hospital or health care facilities, please pay attention to the restriction on the use of mobile phone. Switch off your phone if required.

Mobile Phone

- Please use original accessories or accessories approved by the phone manufacturer. Using any unauthorized accessories may affect your mobile phone's performance, damage your phone or even cause danger to your body and violate related local regulations about telecom terminals.

Precautions for Electronic Devices

- Some electronic devices are susceptible to electromagnetic interference sent by mobile phone if inadequately shielded, such as electronic system of vehicles. Please consult the manufacturer of the device before using the phone if necessary.

Safety and General Use in Vehicles

- Safety airbag, brake, speed control system and oil eject system shouldn't be affected by wireless transmission. If you do meet problems above, please contact your automobile provider. Do not place your phone in the area over an airbag or in the airbag deployment area. Airbags inflate with great force. If a phone is placed in the airbag deployment area and the airbag inflates, the phone may be propelled with great force and cause serious injury to occupants of the vehicle.
- Please turn off your mobile phone at a refueling point, and the same to the place where the use of two-way radio is prohibited.

Aircraft Safety

- Please turn off your mobile phone before the airplane takes off. In order to protect airplane's communication system from interference, it is forbidden to use mobile phone in flight. Safety regulations require you to have permission from a crew member to use your phone while the plane is on the ground.
- If the mobile phone has the function of automatic timing power-on, please check your alarm setting to make sure that your phone will not be automatically turned on during flight.

Battery Use

- Do not short-circuit the battery, as this can cause the unit to overheat or ignite.

Limitation of Liability

ZTE shall not be liable for any loss of profits or indirect, special, incidental or consequential damages resulting from or arising out of or in connection with using this product, whether or not ZTE had been advised, knew or should have known the possibility of such damages. The user should refer to the enclosed warranty card for full warranty and service information.

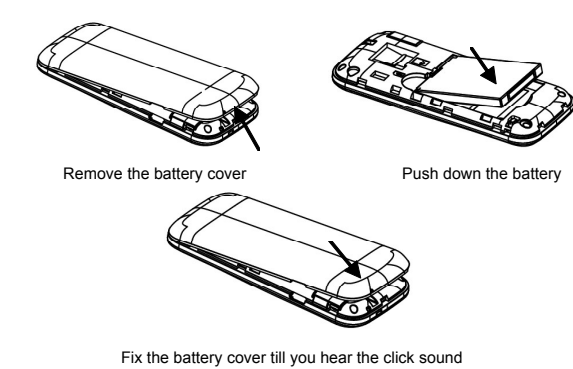
Note: The pictures and icons shown in the manual are just schematic drawings for function demonstration. If they are inconsistent with your handset, please take your handset as the standard. If the inconsistency exists in the manual because of the handset function updating, please refer to the follow-up public information from ZTE CORPORATION.

Function	Description
Left soft key	Performs the function indicated at the left bottom of the screen.
Right soft key	Performs the function indicated at the right bottom of the screen.
Center key	Press to confirm actions and make selections.
4-Way Navigation keys	These keys (UP, DOWN, LEFT and RIGHT) allow for navigation through menu options and quick accessing to some function menus.
Send key	Press to dial a phone number or answer a call, or view the call history in the standby mode.
End/Power key	Press to exit to the standby mode. Hold to switch on/off the phone.
* key and # key	They have different functions in different modes or function menus.
Alpha numeric keys	Press to enter digits 0-9 and the alphabets from a-z or A-Z.
Torch	In the standby mode, hold the 0 key to turn on or off the torch.

Note: In this User Manual, "press a key" means to press the key and release it immediately, while "hold a key" means to press the key for at least two seconds and then release it.

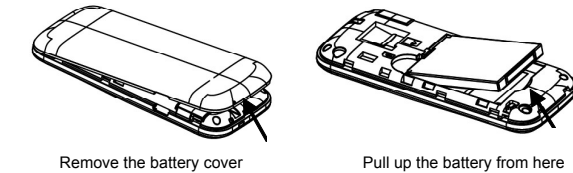
Locking and Unlocking the Keypad

In the standby mode, press the Left soft key and then press the * key within two seconds to lock the keypad. The unlock method is the same. Locking the keypad can prevent unintentional operations on it. You can answer an incoming call with the regular operation when the keypad is locked.



Removing the battery

1. Make sure that your mobile phone is switched off.
2. Remove the battery cover.
3. Pull the battery up and remove it from the mobile phone.



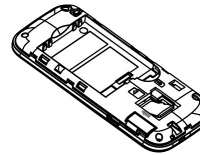
Inserting the Memory Card

You can use a memory card to expand the storage of the phone. You can store or copy files such as music and so on.

Do not take out the card or switch off the phone while transmitting or storing data, which may cause data loss or damage to the phone or the card.

Insert the memory card as follows:

The memory card slot is beside the SIM card holder. You can insert the memory card as shown in the diagram below. Open the battery cover. Insert the card with the metal contacts facing downwards until it clicks to the right position.



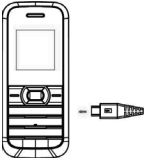
Insert the Memory card

Charging the Battery

Your phone is powered by a rechargeable battery. For maximum battery performance, it is recommended that you first use up the battery power and then charge it completely. A new battery's full performance is achieved only after three complete charge and discharge cycles.

1. Connect your travel adapter to the right side of your mobile phone as shown in the diagram.
2. Connect the other end of the travel adapter to the mains socket.

3. When you charge the battery, the battery charging indicator appears.
4. When the battery is fully charged, disconnect the charger.



Powering your Phone On/Off

Make sure that your SIM card is in your mobile phone and that the battery is charged.

Hold the **End/Power key** to power on/off the phone. The phone will automatically search for the network.

Turning the Torch On/Off

In the standby mode, hold the **0 key** to turn on or off the torch. The torch is at the bottom of the phone.

Writing Text

- Change input mode: Press the **# key** to change the input mode (input modes: ABC, abc,123).
- Input letters: In ABC/abc mode, constantly press the corresponding letter key till the letter appears.
- Input digits: In 123 mode, press digit key once to input a digit. In ABC/abc mode, constantly press the digit key until the number appears.

How to Make and Receive Calls

The most basic way to make a call is to input the number in the standby mode and press the **Send key**. You can also make a call from the Contact list.

To call someone: Go to **Menu→Phonebook→Contacts**. Use the **Up/Down Navigation keys** to find the name of the person you want to call. You can also type in the first letter of the name of the person you want to call to find the right name, and press the **Send key**.

- To receive a call, press the **Left soft key** or the **Send key**.
- To end a call, press the **End/Power key**.
- To reject a call, press the **End/Power key**.

Make sure that you are in an area with sufficient coverage to make calls. The strength of the network signal is indicated on the Status Bar of the screen.

How to Send Messages

You can use your mobile phone to send and receive messages.

- Go to **Menu→Messages→Write message**.
- Write your message. For more information on input method, see section 'Writing Text'. When you write an SMS, press **Options→Send**, and edit the recipient.
- When you finish writing an SMS, select **Options** to send the message.

How to Receive a Message

Upon receiving a message, the mobile phone will alert you with a ringtone, prompt, or a new message icon. Message full when the message icon blinking.

How to View Call history

Go to **Menu→Call logs**.

Dialed calls, Received calls and Missed calls are saved in **Call logs**. If the records are full, the earliest saved records will be deleted automatically.

Also, you can view call timers, call cost in **Call logs**. (Call cost need network support.)

How to Configure Call Settings

Go to **Menu→Settings→Call settings**.

You can set call waiting, call divert and call barring and so on.

How to Set Your Phone

You can adjust various settings of your phone. Go to **Menu→Settings**.

- Profiles: Select a mode to adjust the outside environment.
- Date and time: Set the time and date of your phone.
- Display: Set Wallpaper, and LCD backlight, etc.
- Phone settings: Schedule power on/off, select language, set writing language, and greeting text, etc.
- Call settings: You can set call waiting, call divert and call barring and so on.
- Network settings: Set to automatically or manually select network. Set preferred networks.
- Security settings: Set security features to protect your phone and SIM card from unauthorized use.
- Restore factory settings: Enter the phone password to restore to the factory settings. Some personal information might be lost if you use this function, so be careful.

- Calculator

You can perform simple calculations. Press digit key to enter the number. Press **Navigation keys** to select the operational character. Press **OK** or **Center key** to get the result. Press **Clear** to delete the number.

Note: This calculator has limited accuracy and rounding errors may occur especially in long division.

- Unit converter

This function can help you to change the unit of weight and length.

- Stopwatch

Use it to record the time.

File manager

Go to **Menu→File manager**. You can check all the folders in the memory card, create new ones or rename, delete, or sort, etc.

How to Play Music

Note: Before using this function, you must insert the memory card first.

Go to **Menu→Fun&Games→Audio player**. You can play the audio files in your memory card.

In **List→Options**, you can refresh your list and make personal settings.

Audio player supports: AMR-NB, WAV, MP3, iMelody, MIDI.

Games

Go to **Menu→Fun&Games→Games** to play games.

In **Games**, you can choose your favorite game to play. In **Games→Game settings**, you can set the games.

Questions & Answers

If you encounter problems while using the phone, or if it performs abnormally, you can refer to the chart below. If your particular problem cannot be resolved using the information in the chart, contact the dealer where you purchased the phone.

Problem	Possible causes	Possible solution
Poor reception	The network signal is too weak at your current location, for example, in a basement or near a tall building, because wireless transmissions can not effectively reach it. The network is busy at the current time (for example, during peak times, there may be too much network traffic to handle additional calls). You are too far away from a base station for your service provider.	Move to a location where the network signal can be properly received. Avoid using the phone at such times, or try again after waiting a short time. You can request a service area map from your service provider.

Problem	Possible causes	Possible solution
Shortened standby time	The standby time is related to your service provider system configuration. The same phone used with different service providers' systems will not provide exactly the same length of standby time. The battery is depleted. In high-temperature environments, battery life will be shortened.	If you are located in an area where signaling is weak, temporarily power off the phone. Use a new battery.
	If you are not able to connect to the network, the phone will continue to send out signals as it attempts to locate a base station. Doing so consumes battery power and will consequently shorten standby time.	Change your location to one where the network is accessible, or temporarily turn off your phone.

Problem	Possible causes	Possible solution
Cannot answer incoming calls	You have activated the Call barring feature.	Go to Settings > Call settings > Call barring , and then select Cancel all .
You cannot make outgoing calls.	You have activated the Call barring feature. You have activated the Fixed dial feature.	Go to Settings > Call settings > Call barring , and then select Cancel all . Go to Settings > Security settings > SIM security > Fixed dial > Mode and select Off .
PIN Code blocked	You have entered an incorrect PIN code three consecutive times.	Contact your service provider. If the service provider provides the USIM card's PUK code, use the PUK code to unlock the USIM card.
Unable to enter information into the Phonebook	The Phonebook's memory is already full.	Delete unnecessary data from the contacts.

- Input symbol: Press the *** key** to enter the symbol mode, select the required symbol (common symbols) by pressing the Navigation keys and then press the **Left soft key** or **Center key** to confirm it. In ABC/abc mode, constantly press the **1 key** until the required symbol (common symbols) appears.
- Input space: Press the **0 key** to input space. It does not work in 123 mode.
- Delete character: Press the **Right soft key** to clear a character. Hold the **Right soft key** to delete all characters and clear the display.
- Move cursor to left or right: Among the text, press the **Left/Right navigation keys** to move the cursor to left or right.

How to Add contacts to the Phonebook

There are some numbers that you may want to call again and again, so it makes sense to add these numbers to your Phonebook. You can then access these numbers quickly and easily.

- Go to **Menu→Phonebook→Preferred storage** to set the storage position.
- Go to **Menu→Phonebook→Add new contact**.
- Edit the information and save it.
- You can also save a number right after you've made or received a phone call or a message from someone who is not yet in your Phonebook list.
- To delete someone from your Phonebook list, go to **Phonebook→Contacts**, first select the name, then select **Options→Delete**.

- Press Read to open the new message. You can also go to Inbox to read the message.
- Use the **Up/Down Navigation keys** to view the message.
- While the message is open, use Options to reply, delete, or forward the message. You can go to **Use number** to save the sender's number.

You can also receive broadcast messages by using this mobile phone.

If you want to receive broadcast messages, firstly you should ask the network provider to give you the channels information. Then follow the steps as below to enable the broadcast message function:

- Go to **Menu→Messages→Broadcast messages→Receive mode**. Select **On** to turn on broadcast message function.
- Go to **Menu→Messages→Broadcast messages→Channels→Add** to add the channel information and save it.
- Go to **Menu→Messages→Broadcast messages→Channels→Select** to select the channels you want.

If you receive a new broadcast message, the new message icon will appear in the idle interface.

Go to **Menu→Messages→Voice mail**, you can call the voicemail or edit the voicemail.

How to Set Profiles

Go to **Menu→Settings→Profiles**. You can select **Options→Activate** to activate a profile. Or you can select **Options→Customize** to edit a profile.

Note: The Headset mode can only be activated with the headset connected. The Silent mode can be only set **Activate** or not.

Note: You may be required to input the phone password in some of the security setting interfaces. The default password is 1122. Go to **Security settings→Phone security→Change password** to change the phone password.

FM radio

Go to **Menu→FM radio**.

With the radio, you can search for radio channels, listen to them and save the channels. Note that the quality of the radio broadcast depends on the coverage of the radio station in that particular area. In the FM radio interface, you can press **Up/Down Navigation keys** to adjust volume, press **Left/Right Navigation keys** to tune the frequency, and press the **Center key** to pause. Select **Options** to enter the submenu.

Organizer

Go to **Menu→Organizer**.

- Calendar

Enter Calendar, the calendar of the current month will be displayed on the screen and the current date will be marked by a background box in a special colour. In the Calendar interface.

- Tasks

Select Add to add tasks.

- Alarm

You can view, and edit the alarm clock settings. You can also enable or disable the alarms. By pressing Edit, you can set the corresponding features of the alarm according to instructions.

- World clock

You can view the time in different cities.

How to Use Services

Go to **Menu→Services**. In Services you can use STK.

- STK

SIM card Toolkit (STK) services are value-added services provided by your network provider.

Your mobile phone supports STK service, but if your SIM card and network provider do not support the service, these functions can't be used.

Problem	Possible causes	Possible solution
Echo or noise	Poor network trunk quality on the part of your service provider. Poor local telephone line quality.	Press End key and dial again. You may be switched to a better-quality network trunk or phone line. Press End key and dial again. You may be switched to a better-quality network trunk or phone line.
Unable to select certain features	Your service provider does not support these features, or you have not applied for services that provide these features.	Contact your service provider.
Battery not charge	The battery or battery charger is damaged. The phone's temperature is below 0°C or higher than 45 °C. Poor contact between the battery and charger.	Contact the dealer. Adjust the battery charging environment to avoid extremes of temperature. Check all connectors to make sure all connections have been properly made.

Problem	Possible causes	Possible solution
Cannot switch your phone on	Battery power has been depleted.	Recharge the phone's battery.
USIM card error	USIM card malfunction or damage. USIM card inserted improperly. Debris on the USIM card contacts.	Take the USIM card to your service provider for testing. Insert the USIM card properly. Use a soft, dry cloth to clean the USIM card contacts.
Unable to connect to the network	USIM card invalid. You are not within the network's service area. Poor signal.	Contact your service provider. Check the service area with your service provider. Move to an open space, or if you are inside a building, move closer to a window.