



ZTE AC30

Quick Start Guide

ZTE CORPORATION

NO. 55, Hi-tech Road South, ShenZhen, P.R.China

Postcode: 518057

URL: <http://www.zte.com.cn>

Tel: +86-755-26779999

E-mail: mobile@zte.com.cn

Introduction

ZTE AC30 is a 3G/2G mobile hotspot device, working in CDMA/1X/EVDO network. The client devices could connect to it via USB or Wi-Fi interface. The device supports data and SMS services, enabling you to communicate anytime and anywhere.

This quick guide provides instructions on how to install and get started with the product. For information about connection of services, please consult your service provider. And all images in this document are only for reference.

Specification

Data Service	HSPA:	DL 7.2 Mbps UL 5.76 Mbps
	EVDO:	DL 3.1 Mb/s UL 1.8 Mb/s
Interface	USB and Wi-Fi	
Wi-Fi Standard	802.11 b/g	
Wi-Fi Security	WEP/WPA/WPA2	
USB Version	USB 2.0 HIGH SPEED	
USB Interface Type	Mini USB-B	
Weight	80 g	
Dimensions (W×H×D):	99.7 mm×53.7 mm×13.9 mm	
Power Adapter	5 V/700 mA	
Battery	1500 mAh	
*Standby time	100 hours	
*Working time	4 hours	

Operate system	Windows 7, Windows Vista, Windows XP (SP2 or later), MAC 10.4 or later
Web Browser	IE (7.0 or later), Firefox (3.0 or later), Opera (10.0 or later), Safari (4.0 or later), Chrome (5.0 or later)
Operating temperature	0 °C ~ +35 °C
Storage temperature	-20 °C ~ +50 °C
Charging temperature	0 °C ~ +45 °C
Humidity	5% ~ 95%

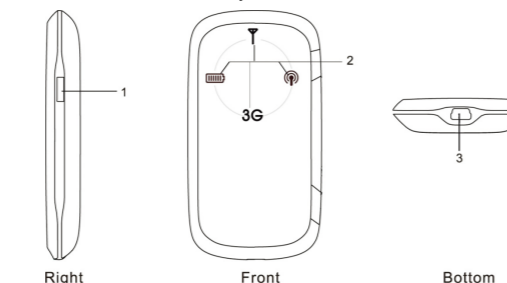
Notes:

microSD is a trademark of SD Card Association.

The device's standby and working time are only for your reference, and based on ideal working environment.

Getting to Know Your Device

The following figure shows the appearance of the device, it is only for your reference. The actual device may be different.



Right

Front

Bottom

Interface and Buttons

1. Power	Press and hold the Power key for five seconds to switch the product on or off.
2. Indicator	It indicates your product status
3. Charger/USB port	<ul style="list-style-type: none"> Charge your device Connect the client to your device via USB cable

LED Indicator

Indicator	Status	Description
Battery indication	RED glittering	Please charge
	RED bright	Voltage of battery is low
	Green glittering	Charging
	Green bright	Voltage of battery is high
	LED off	No battery.
Signal strength indication	Red bright	ERROR or NO signal or NO network service
	GREEN glittering	Signal is ok
	Green bright	Signal is good
	LED off	Low power mode
Wi-Fi indication	LED off	WIFI is inactive or low power mode
	BLUE bright	WPS is active
	Blue bright	Wi-Fi is active

Network indication 3G	RED glittering	2G Modem data transferring
	RED bright	Register on 2G network
	GREEN glittering	3G Modem data transferring
	GREEN bright	Register on 3G network
	LED off	ERROR or NO signal or NO network service

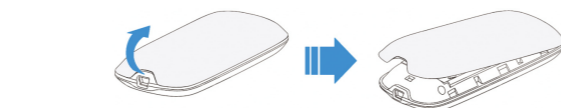
Notes:

- The battery LED will be GREEN bright once the battery is fully charged when power on.
- The battery LED will be turn off once the battery is fully charged when power off.

Hardware Installation

Inserting Battery

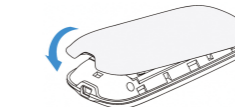
- Use the thumb catch at the bottom of the device to open the battery cover.



- Insert the battery as shown with the contacts located against the metal springs, and press the battery down into the case.



- Line the battery cover up correctly and press gently to close the case.



Switching On/Off Your Device

Hold the **Power** button to switch on/off the device.

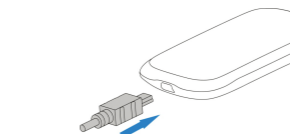
Notes:

The device is powered on when the signal strength indication lights up.

Charging Your Device

You can charge your device by using USB cable or adapter.

- Insert the charger lead carefully with the plug arrow facing the bottom of the device.
- The plug only fits one way. Do not use excessive force to insert the plug.
- Make sure the plug is the right way round and lined up correctly and insert it gently.



Connect your device to PC (Only available for Modem Mode)

- Connect the product and the computer with the provided USB data cable.
- Switch on the device, the system will recognize you device and begin to install the software.

Notes:

Do not put anything on the top of router. Do not lay routers to overlap each other

Working Mode

Your device supports two working modes. For the client, we only use PC or laptop as the example in this document.

USB Mode: Connect to the device with the USB cable.



Wi-Fi Mode: Connect to the device via Wi-Fi.

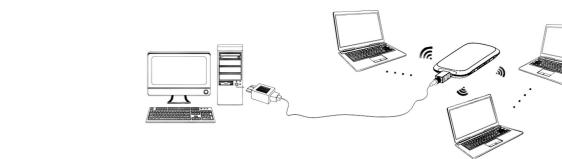


Mixed Mode: Connect to the device with the above two connection methods.

Notes:

If you want to connect to the Internet by using Wi-Fi mode, make sure that the client supports the Wi-Fi function.

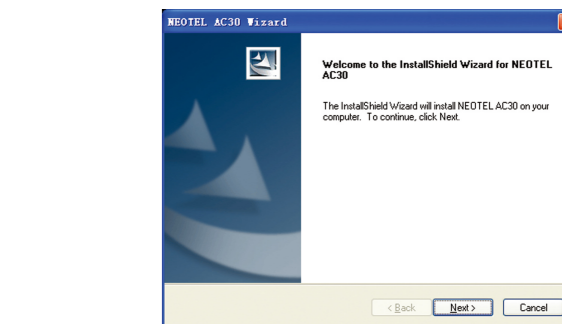
The following picture is the application example. All of the client devices can surf on the Internet at the same time.



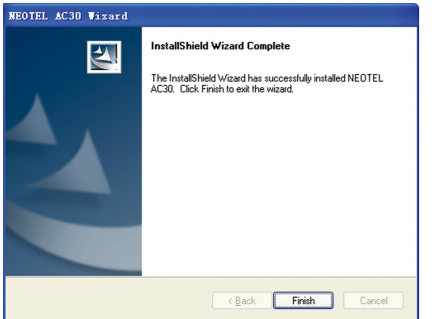
Establishing a Connection Between Your Device and the Client

Via USB Cable

- Connect your device and the client with the USB cable.
- Power on your device.
- Follow the system prompts to complete the software installation:
 - Click **Next** to start the installation.



B. After installing successfully, click **Finish** to end the procedure.



Notes:

- If the system does not launch installation automatically, you can run the installation program in path of **My Computer > NEOTEL AC30**.
- The driver of your device will be installed at the same time.
- After the installation, the system will create a shortcut icon on your desktop and a **NEOTEL AC30** program group in the **Start > Programs** menu. The connection between your device and the client will be established successfully a moment later.

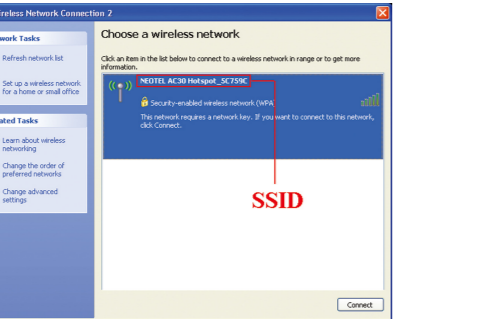
Via Wi-Fi

1. Power on your device directly. It will take 1~2 minutes to initialize, and then Wi-Fi LED is blinking.
2. Use your normal Wi-Fi application on the client to search the available wireless network.

Notes:

You need to check your **Wireless Network Connection**. Set the client to obtain an IP address automatically in the Internet protocol (TCP/IP) properties, and the client will get an IP address like "192.168.0.100".

3. Select the SSID of your device, and then click **Connect**.



Notes:

- There will be a pop-up window to require the password. Check the label on your device to gain the SSID and preset password information. Make sure that you can remember the new password if you have changed the password by selecting **Settings > Wi-Fi Settings > Security**. Please restore the device to the factory default settings in case you forget the new password.
4. Wait a moment, the connection between your device and the client will be established successfully.

Accessing the Internet

1. Switch on the device.
2. Establish a connection between your device and the client.
3. After successfully establishing the connection, access the Internet in the **Always On, Manual** or **On Demand** mode. The default mode is **Always On**.

Notes: You can browse the **WebGUI Configuration page** and click **WAN Connection** to set the WAN connection mode.

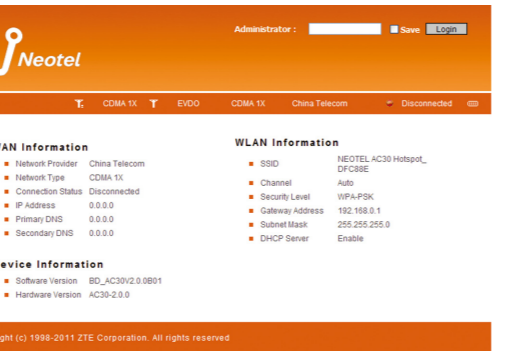
Accessing the WebGUI Configuration Page

1. Make sure the connection between your device and the client is correct.
2. Launch the internet browser and enter <http://192.168.0.1> or <http://wifi.home> in the address bar, or double click the **NEOTEL AC30** icon on the desktop directly.

Notes:

It is recommended that you use **IE (7.0 or later)**, **Firefox (3.0 or later)**, **Opera (10.0 or later)**, **Safari (4.0 or later)** or **Chrome (5.0 or later)**.

3. The login page appears as follows.



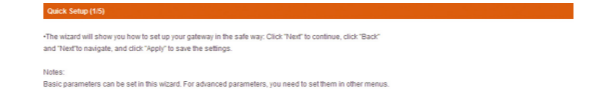
View the information of WAN, WLAN and Device. Input the case-sensitive default password "**admin**", and then click **Login** to access the WebGUI Configuration page.

Notes:

- Do not put anything on the top of your device. Do not lay devices to overlap each other when using.
- The device takes 1~2 minutes to initialize, and attach to the network.

Quick Setup

After logging in, select **Quick Setup**, and then the Quick Setup wizard appears.



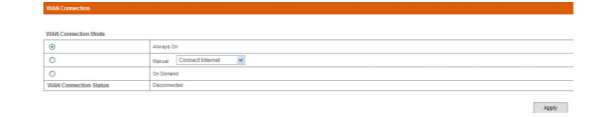
The Quick Setup wizard guides you how to set the basic parameters for your device in the safest way. After this procedure, you can use your Internet service.

Notes:

The parameter settings may have been preset by your service provider, and you will enjoy your Internet service directly. Please contact your service provider for details if you want to do some modification.

WAN Connection

After logging in, select **WAN Connection**, and you can choose the WAN Connection Mode according to your requirement.



Settings

After logging in, select **Settings**, and you can do the following operations.

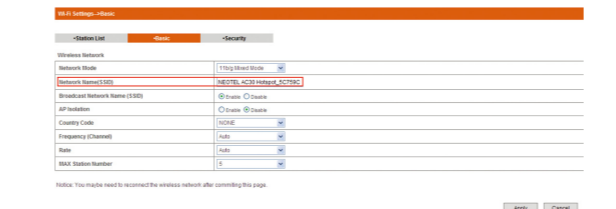
Select Settings > Wi-Fi Settings	View the current station list, change the basic wireless network settings, choose security mode and WPA type
Select Settings > 3G Settings	View the 3G Wireless Information, and set Band Selection Mode
Select Settings > Firewall	Set the Mac/IP/Port Filtering, Port Forwarding or the System Security configuration
Select Settings > Advanced	View the current status of your device, change the Administrator Settings, restore factory defaults, or set the LAN interface configuration

Notes:

Make sure that you can remember the new password if you change the login password by selecting **Settings > Advanced > Management**. Please restore the device to the factory default settings in case you forget the new password.

How to change SSID name

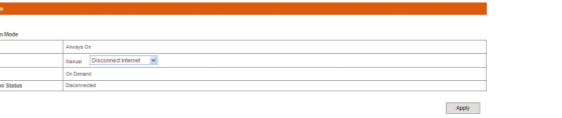
After logging in, select **Settings > Wi-Fi Settings > Basic**, and you can do the following operations:



Input your desired SSID name, and click **Apply** to confirm your settings.

Disconnecting from the Internet

1. Log in the WebGUI Configuration page, and select **WAN Connection**.
2. Select **Manual > Disconnect Internet**.
3. Click **Apply**.



Notes:

Turning off the device can also terminate the internet connection.

Sleeping Mode

When you enable the Wi-Fi function and use the battery to supply power to the device, once no user connects to the device within 10 minutes, the device will enter the sleep mode, and all LEDs will be turned off. In the sleep mode, the Wi-Fi function will be disabled. Press **Power** button to wake up the device, and all LEDs will be turned on.

Notes:

You can only press the **Power** button to awake the device.

Warning and Notice

To the Owner

- Some electronic devices are susceptible to electromagnetic interference sent by your device if inadequately shielded, such as the electronic system of vehicles. Please consult the manufacturer of your device before using if necessary.
- Operating your device may interfere with medical devices like hearing aids and pacemakers. Please always keep them more than 20

centimeters away from such medical devices when they are turned on. Turn your device off if necessary. Consult a physician or the manufacturer of the medical device before using your device.

- Be aware of the usage limitation when using your device at places such as oil warehouses or chemical factories, where there are explosive gases or explosive products being processed. Turn off your device if required.
- The use of electronic transmitting devices is forbidden in aircrafts, at petrol stations and in hospitals. Please observe and obey all warning signs and switch off your device in these conditions.
- Do not touch the inner antenna area if not necessary. Otherwise it will affect your device's performance.
- Store your device out of the reach of little children. Your device may cause injury if used as a toy.
- Do not touch the metallic parts of your device so as to avoid a burn, when your device is working.

Using Your Device

- Please use original accessories or accessories that are authorized. Using any unauthorized accessories may affect your device's performance, and violate related national regulations about telecom terminals.
- Avoid using your device near or inside metallic structures or establishments that can emit electromagnetic waves. Otherwise it may influence signal reception.
- Your device is not waterproof. Please keep it dry and store in a shady and cool place.
- Do not use your device immediately after a sudden temperature change. In such case, it will produce dew inside and outside your device, so don't use it until it becomes dry.
- Handle your device carefully. Do not drop, bend or strike it. Otherwise your device will be damaged.
- No dismantling by non-professionals and only qualified technicians can undertake repair work.
- Operating temperature range of 0 °C ~ +35 °C and humidity range of 5% ~ 95% are recommended.

Using Battery

- Do not short-circuit the battery, as this can cause excessive heat and fire.
- Do not store battery in hot areas or dispose of it in a fire to avoid explosion.
- Do not disassemble or modify the battery.
- When not using the battery for a long period, remove it from the device and store it in a cool dry place.
- Never use any charger or battery damaged or worn out.
- Return the wear-out battery to the provider or put it in the appointed recycle place. Do not put it in familial rubbish.

Warning:

If the battery is broken, keep away from it. If it taints your skin, wash your skin with abundant fresh water and ask doctor help if necessary.

How to Get Help

Neotel (PTY) LTD

Website: www.neotel.co.za

Customer Care

Telephone: 0860 Neotel (636835)

Email: consumers@neotel.co.za