

Specification

Interface Type	USB modem
Systems supported	Supports most makes of portable PC
Functions	SMS service, Data service, Applications management, Data concurrent, etc.
Network Standards	HSDPA/UMTS/EDGE/GPRS/GSM
Frequency Bands	HSDPA/UMTS 2100MHz, GSM/GPRS/EDGE 900/1800/1900MHz
Temperature	-20 °C to 60 °C

HSDPA USB modem User Guide

Published by Hutchison 3G UK Limited, trading as **3**.

All rights in this publication are reserved and no part may be reproduced without the prior written permission of the publisher. © 2007 Hutchison 3G UK Limited. A Hutchison Whampoa company.

ZTE is the manufacturer of the MF622 HSDPA USB modem and has provided the information on its features and use set out in this user guide. The contents are believed to be correct at the time of going to press, but any information, products or services mentioned may be modified, supplemented or withdrawn.

The provision of any products and services by Hutchison 3G UK Limited using ZTE MF622 HSDPA USB modem is subject to **3**'s customer terms (available at three.co.uk).

3 and related images, logos and names referred to in this publication are trademarks of the Hutchison Whampoa group of companies.

This publication is printed on fully recyclable paper.

Duttons 040476 Nov07



No more wires, no more hassles, no more waiting for a line to be installed.

Just plug your new USB modem into your laptop and within five minutes you're on the web. You can even swap your modem between computers and get your broadband wherever you want it.

Find out more about the 3 USB Modem and other services:

Visit three.co.uk

Email customer.services.co.uk@3mail.com

Call **Customer Services** on 333 from your 3 mobile (**0870 7330 333** from another phone).

Contact Centre

3 Customer Services
Hutchison 3G UK Ltd
PO Box 333
Glasgow
G2 9AG

Getting Started.

Installation

- 1 Remove the cover on the right-hand side of the device
- 2 Insert the USIM card into the USB modem
- 3 Replace the cover



ZTE

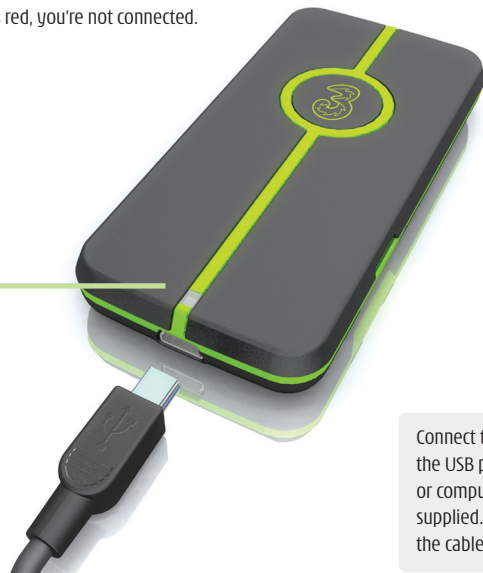
2

ZTE

3

Connecting your USB modem and computer.

When you're connected to the internet, the light on the modem will be green. If it shows red, you're not connected.



Connect the USB modem to the USB port of your laptop or computer using the cable supplied. Make sure that the cable is fully inserted.

ZTE

4

Installing the USB modem software.

Once you're connected, the software will automatically install itself. You'll first see a new icon in the status bar (see below) and this shows that the USB modem and computer have been connected without any problems.



After a few seconds, the installation will automatically continue. Then just follow the on-screen instructions and wait until you can start using the mobile internet.

If you own a Mac

If you own a Mac, you'll need to install the software using the CD that came with this pack. All you need to do is insert the CD into your disk drive and follow the on-screen instructions.

Disconnecting the USB modem


To make sure that you remove the USB modem safely, please disconnect in the correct way. For example, Microsoft Windows users need to right click on the icon in the status bar, and select Safely Remove Hardware. Follow the on-screen prompts until you're told that it's safe to remove the USB modem.

ZTE

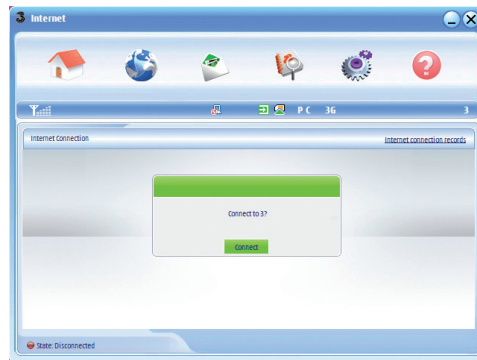
5

How to use your USB modem.

Once you've installed the software, all you need to do each time you want to use the USB modem is:

- › Attach the USB modem to your computer using the supplied USB cable
- › Click on the  from your laptop or PC.

After you've clicked on the  wait for the following screen to appear (this should take about 30 seconds), then click on **Connect** in the pop up window.



The network will show you if your connection is successful. Then you're ready to start using the internet, just like you would do on any other computer.

To end your internet session, just click on **disconnect**.

ZTE

6

Usage and safety instructions.

General safety

- › The use of electronic transmitting devices is forbidden in aircraft, at petrol stations and in hospitals. Please observe and obey all warning signs and switch off your modem in these conditions.
- › Operating a portable PC and USB modem may interfere with medical devices like hearing aids and pacemakers.
- › Be aware of warning signs in places such as oil refineries or chemical factories where there are explosive gases or explosive products being processed.
- › Store the USB modem out of the reach of children. The USB modem may cause injury if used as a toy or may be damaged by rough play or moisture.

Using your USB modem

- › Only use original accessories supplied by the manufacturer. Using unauthorised accessories may invalidate your warranty.
- › Avoid using the USB modem near or inside metallic structures or establishments that can emit electromagnetic waves.
- › The USB modem is not waterproof, please keep it dry and store it in a cool place out of direct sunlight.
- › Handle the USB modem with care. Don't drop, bend, knock or treat it harshly to avoid damage to the unit.
- › There are no user serviceable parts. Dismantling the unit will invalidate the warranty.
- › Operating temperature range of -20 °C to 60 °C and humidity 5% to 95% are recommended.

ZTE

7